

JACK BROWNS SPB (See WINTER HAVEN on page 181)

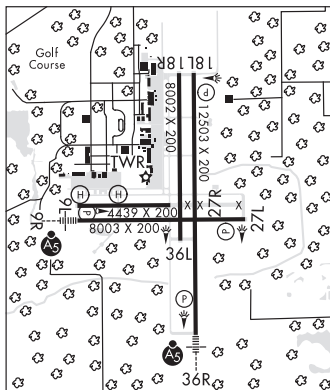
JACKSONVILLE

JACKSONVILLE

CECIL (VQQ)(KVQQ) P (ARNG) O N UTC-5(-4DT) N30°13.13' W81°52.63'

H-8H, 12F, L-21D, 24G, A IAP, AD

- 80 B NOTAM FILE VQQ
- RWY 18L-36R: H12503X200 (ASPH-CONC) PCN 59 R/B/W/T HIRL
- RWY 18L: REIL. PAPI(P4L)—GA 3.0° TCH 66'. Trees.
- RWY 36R: MALSR. PAPI(P4L)—GA 3.0° TCH 66'. Trees.
- RWY 09R-27L: H8003X200 (ASPH-CONC) PCN 21 F/A/X/T HIRL
- RWY 09R: MALSR. PAPI(P4L)—GA 3.0° TCH 68'. Trees.
- RWY 27L: REIL. PAPI(P4L)—GA 3.0° TCH 67'. Trees.
- RWY 18R-36L: H8002X200 (ASPH-CONC) PCN 21 F/A/Y/T
- RWY 18R: Trees.
- RWY 09L-27R: H4439X200 (ASPH-CONC) PCN 27 R/B/X/T
- RWY 09L: Trees.



SERVICE: S4 FUEL 100LL, JET A1+ OX 1, 3, 4 LGT When ATCT clsd actvt MALSR Rwy 09R and 36R; REIL Rwy 18L and Rwy 27L; HIRL Rwy 18L-36R, Rwy 09R-27L—CTAF. **MILITARY—FUEL A+** (Avbl H24 Mon-Fri, 1100-0400Z± Sat and Sun, and hol C904-317-6550. 130.925. OT 12 hr PN rqr and \$60 fee per occurrence.) (NC-100LL, A).

AIRPORT REMARKS: Attended Mon-Fri 1200-0400Z±, Sat-Sun 1200-0200Z±. Wildlife invof arpt. VTOL ops not auth. Dalgt glldr ops 6000 ft & blw; Herlong Recreational 5 NM NE. 180° turn on asph ptns of rwy by P-3 or larger na. Mil carrier break na. Hold shrt sign Rwy 09L-27R & Rwy 18R-36L unlgtd. Rwy 09L-27R rstd to fixed wing acft 12,500 lbs and blw. Twy C clsd at mil gate. Twy M clsd exec to mil acft. Twy D clsd N of Twy D2. Dep turns prior to DER wo twr aprvl na. Air to FBO com—130.925. Rwy 18R-36L longl and transverse cracking btn ints.

AIRPORT MANAGER: 904-573-1601

WEATHER DATA SOURCES: AWOS-3 125.275 (904) 778-6934.

COMMUNICATIONS: CTAF 126.1 ATIS 125.275

Ⓡ JACKSONVILLE APP/DEP CON 127.775

TOWER 126.1 (1200-0400Z± Mon-Fri, 1200-0200Z± Sat-Sun) GND CON 121.625

CLNC DEL 123.975

GCO 135.075 (JACKSONVILLE APCH)

CLEARANCE DELIVERY PHONE: For CD when ATCT clsd, and una via GCO, ctc Jacksonville tracon at 904-741-0284.

AIRSPACE: CLASS D svc 1200-0400Z± Mon-Fri, 1200-0200Z± Sat-Sun; other times CLASS G.

RADIO AIDS TO NAVIGATION: NOTAM FILE CRG.

CRAIG (H) (H) VORTACW 114.5 CRG Chan 92 N30°20.33' W81°30.60' 252° 20.4 NM to fld. 42/3W.

ILS/DME 109.5 I-VQQ Chan 32 Rwy 36R. Class IE. Unmonitored when ATCT clsd. DME unusable byd 28° right of course.

COMM/NAV/WEATHER REMARKS: Air to FBO com 130.925.

• • • • •
HELIPAD H1: H70X70 (CONC)

HELIPAD H2: H70X70 (CONC)