

YUMA MCAS/YUMA INTL (NYL)(KNYL) MIL/CIV N 3 S UTC-7 N32°39.39' W114°36.36'

PHOENIX

213 B TPA—See Remarks AOE Class I, ARFF Index A NOTAM FILE NYL

H-4J, L-5A

RWY 03L-21R: H13300X200 (CONC) S-103, D-200, 2D-400

IAP, DIAP, AD

PCN 71 R/C/W/T HIRL

RWY 03L: REIL. PAPI(P4L)—GA 3.0° TCH 53'. Rgt tfc.

RWY 21R: MALSR. PAPI(P4L)—GA 3.0° TCH 50'.

RWY 03R-21L: H9240X150 (ASPH-CONC) S-162, D-200, 2D-400

PCN 59 F/B/W/T HIRL 0.4% down SW

RWY 03R: REIL. PAPI(P4L)—GA 3.0° TCH 50'. Antenna. Rgt tfc.

RWY 21L: REIL. PAPI(P4L)—GA 3.0° TCH 51'. Road.

RWY 08-26: H6146X150 (ASPH) S-63, D-137, 2D-206

PCN 33 F/B/W/T HIRL 0.3% up E

RWY 08: Road. Rgt tfc.

RWY 26: Road.

RWY 17-35: H5710X150 (ASPH-CONC) S-72, D-171, 2D-255

PCN 33 F/B/W/T HIRL

RWY 17: VASI(V4L)—GA 3.0° TCH 40'. Tree. Rgt tfc.

RWY 35: REIL. Brush.

RUNWAY DECLARED DISTANCE INFORMATION

RWY 03L:TORA-13300 TODA-13300 ASDA-13300 LDA-13300

RWY 03R:TORA-9240 TODA-9240 ASDA-9240 LDA-9240

RWY 08: TORA-6146 TODA-6146 ASDA-6146 LDA-6146

RWY 17: TORA-5710 TODA-5710 ASDA-5710 LDA-5710

RWY 21L:TORA-9240 TODA-9240 ASDA-9240 LDA-9240

RWY 21R:TORA-13300 TODA-13300 ASDA-13300 LDA-13300

RWY 26: TORA-6146 TODA-6146 ASDA-6146 LDA-6146

RWY 35: TORA-5710 TODA-5710 ASDA-5710 LDA-5710

ARRESTING GEAR/SYSTEM

RWY 03L HOOK E28(B) (3495 FT)

HOOK E28(B) (1699 FT) **RWY 21R**

RWY 03R HOOK E28(B) (2725 FT)

HOOK E28(B) (1675 FT) **RWY 21L**

SERVICE: S2 FUEL 100, JET A, A+ OX 1, 2, 3, 4

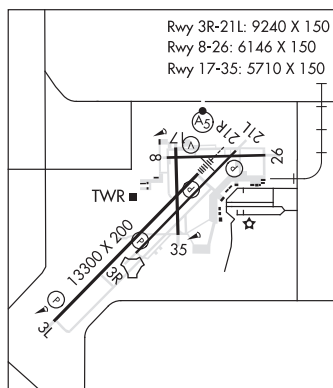
AIRPORT REMARKS: Attended continuously. Mil opr hr 1430-0600Z dly; clsd hol. Mil avn ops not authorized 1430-1500Z dly.

VAL/Trans svc abvl Mon-Fri 1500-0600Z, clsd Sat-Sun, Hol. Mil ramp clsd hol. Fuel: 100: on call H24. CAUTION: Avoid ovft Mexican border 7 NM W, jet trng ops invof. High volume LCL area ops on UHF; VHF ops exer ctn & strict compliance to ATC instr. Avoid ovft of MCAS Yuma infrastructure E of main apron. CAUTION: Joint use civil/mil arpt; gen avn and acr opr VFR enter ATA at 1200 ft when asgn Rwy 08-26 or 17-35. CAUTION: Tfc pat Rwy 03L/R and 21L/R overlap tfc pat Rwy 08-26 and 17-35. TPA Rwy 08-26 and 17-35 1200(984). TPA for civil turbo-jet acct asgn Rwy 03L/R or 21R/L 1700(1487) TPA hel 700(487). TPA Rwy 03L/R right traffic 1700(1487), Rwy 21L/R left traffic 1700(1487). Initial alt for overhead 4000(3784) 6 NM. Initial alt for straight-in 3000(2784) 6 NM. Copter-700 ft for any rwy. Gen avn and acr VFR dep fly rwy hdg mntrn 1200 ft until outside ATA unless otrw apvd by twr. Mil jet ops fm 4000-3000 ft MSL descending to 1700 ft MSL w/ 6 NM SW straight-in Rwy 03L and 03R and w/ 6 NM NE straight-in Rwy 21R and 21L. Ambulance ops btn 0500-1300Z needing gnd access—Civil Arpt Auth C928-941-2396 or 376-5868. Twy A2 PCN 33/F/B/W/T, Twy K PCN 30/B/W/T, Twy L PCN 33/F/B/W/T, Twy Z PCN 33/F/B/W/T. Rotary wing acct recovery na to VTOL pad-4. 976 ft stwy Rwy 03R; 1000 ft stwy Rwy 21L; 1000 ft stwy Rwy 03L; 1000 ft stwy Rwy 21R; 1000 ft stwy Rwy 08; 251 ft stwy Rwy 26; 800 ft stwy Rwy 17; 262 ft stwy Rwy 35. Flight Notification Service (ADCUS) available. U.S. CUSTOMS port of entry-928-344-9572 or 928-314-1295. Civil arpt ops-928-726-5882 extn 2161 or 928-941-2396.

MILITARY REMARKS: Opr 1430-0600Z dly, clsd hol, OT by NOTAM. Military ramp clsd hol. See FLIP AP/1, Supplementary Arpt

Information. Mil arpt ops-928-269-2077. **RSTD** Flt clnc manned durg mil ops hr-D269-2326/2323/2077, C928-269-2326/2323/2077. Tsnt 24 hr PPR-D269-2445/2760, C928-269-2445/2760. AV8B vstol trng to Rwy 03-21 may have priority Mon-Fri over mil prac apch. 24 hr PPR for all tsnt fr VAL C928-269-2445, D269-2445. 24 hr PPR all tsnt utilizing mil ramp; D951-2445/2760, C928-269-2445/2760. Mil acct req to Rwy 03-21 may have priority Mon-Sat over practice apchs. Civilian arpt ops C928-726-5882 extension 2156. FOD Rstrn: Hvy/wide body acct arr/dep Rwy 03L-21R only. Back-taxi Rwy 03L-21R then Twy D for ingress/egress MCAS Yuma-S main prkg apn/val. Back-taxi Rwy 03L-21R then Twy H1 or F1 for ingress/egress Yuma Intl Arpt/Million Air Yuma FBO defense contractor complex prkg apn. No other rwy or twys are authorized. No hvy/wide-body eng runs/runups on rwy authorized. Exc Air Force 1/2. **MISC** DSN 269-2445/2760, C928-269-2445/2760. AV8B vertical/short tkf and ldg to Rwy 03-21 may have priority Mon-Fri over mil multiple practice apch. Afld ops hr applies to all mil inclg Yuma Intl Arpt and FBO. Aft hrs two week PPR in writing-928-269-3327/D 269-3327.

AIRPORT MANAGER: 928-269-3327



CONTINUED ON NEXT PAGE

CONTINUED FROM PRECEDING PAGE

WEATHER DATA SOURCES: ASOS ASOS installed at auxiliary landing field by usmc. Yuma in support of training for aviation operations aboard MCAS yuma. ASOS to provide local use data for USMC training purposes. Nws phx serves yuma.

COMMUNICATIONS: CTAF 119.3 ATIS 118.8 273.5 (24 hrs) UNICOM 122.95

YUMA RCO 122.2 (PRESCOTT RADIO)

® APP CON 124.7

TOWER 119.3 377.075 (1430-0600Z dly, cld hol. Mil avn ops not authorized 1430-1500Z dly ue to afld maint.)

GND CON 121.9 314.0

DEP CON 125.55 282.325

CLNC DEL 118.0 336.4

COMD POST 337.9 **PMSV METRO** 120.7 120.725 349.75 (Avbl Mon-Fri 1400-2330Z)

VFR ADVSY SVC 124.7 371.975

AIRSPACE: CLASS D svc 1430-0600Z, clsd hol; other times CLASS E.

RADIO AIDS TO NAVIGATION: NOTAM FILE NYL.

(L) **TACAN** Chan 84 NYL (113.7) N32°38.81' W114°36.81' at fld. 193/11E.

BARD (VH) (H) VORTAC 116.8 BZA Chan 115 N32°46.09' W114°36.18' 167° 6.7 NM to fld. 130/14E. NOTAM FILE SAN.

VOR unusable:

016°-030° byd 40 NM blo 9,000'

016°-030° byd 63 NM

031°-054° byd 40 NM

063°-116° byd 40 NM

265°-015° byd 40 NM

280°-300° byd 27 NM blo 3,600'

TACAN AZIMUTH unusable:

280°-300° byd 27 NM blo 3,600'

DME unusable:

280°-300° byd 27 NM blo 3,600'

ILS 108.3 I-YUM Rwy 21R. Class IE.

ASR/PAR

COMM/NAV/WEATHER REMARKS: Mil use: ILS Radar; see Terminal FLIP for Radar Minima.