

**BLYTHE** (BLH)(KBLH) 6 W UTC-8(-7DT) N33°37.15' W114°43.01'  
 400 B TPA—1200(800) NOTAM FILE BLH  
**RWY 08-26:** H6543X150 (ASPH) S-80, D-115, 2S-175, 2D-210

**PHOENIX**  
 H-4J, L-4J, 5A  
 IAP

MIRL  
**RWY 26:** VASI(V4L)—GA 3.0° TCH 42'.  
**RWY 17-35:** H5800X100 (ASPH) S-52, D-76, 2S-100, 2D-135 MIRL  
**RWY 17:** VASI(V4L)—GA 3.0° TCH 40'.  
**RWY 35:** VASI(V4L)—GA 3.0° TCH 40'.

**SERVICE:** FUEL 100LL, JET A LGT ACTIVATE MIRL Rwy 17-35 and Rwy 08-26 and VASI Rwy 17, Rwy 35, and Rwy 26—CTAF.

**AIRPORT REMARKS:** Attended Apr-Oct 1500-0000Z†, Nov-Mar 1600-0100Z‡. Parachute training high and low levels all hrs northeast quad of airport. Acft over 12,500 pounds avoid housing area 1.5 NM SW below 2000'. Final apch Rwy 35 be established 2 NM from touchdown. Departure from Rwy 17 make climbing left turn soon as safety permits. Use wide tfc pattern for Rwy 26 and Rwy 35. Power plant 1 mile east of arpt producing thermal plumes; avoid low altitude direct overflight of the power plant.

**AIRPORT MANAGER:** 951-955-9418  
**WEATHER DATA SOURCES:** ASOS 120.175 (760) 922-3000.  
**COMMUNICATIONS:** CTAF/UNICOM 122.8

**RCO 122.4 (RIVERSIDE RADIO)**

® **L.A. CENTER APP/DEP CON 128.15**

**CLEARANCE DELIVERY PHONE:** For CD if una to ctc on FSS freq, ctc Los Angeles ARTCC at 661-575-2079.  
**AIRSPACE:** CLASS E.

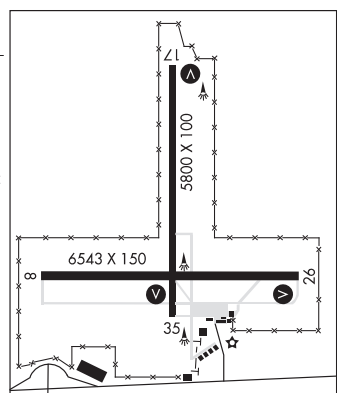
**RADIO AIDS TO NAVIGATION:** NOTAM FILE BLH.

**(VH) (H) VORTACW 117.4** BLH Chan 121 N33°35.76' W114°45.68' 044° 2.6 NM to fld. 410/14E.

- VOR unusable:
- 060°-063° byd 40 NM
  - 069°-074° byd 40 NM
  - 075°-094° byd 40 NM blo 6,000'
  - 075°-094° byd 49 NM blo 10,000'
  - 075°-094° byd 89 NM
  - 095°-105° byd 40 NM
  - 112°-138° byd 40 NM
  - 178°-272° byd 40 NM
  - 273°-283° byd 40 NM blo 11,000'
  - 273°-283° byd 58 NM
  - 280°-295° byd 30 NM blo 7,000'
  - 284°-294° byd 40 NM blo 8,500'
  - 284°-294° byd 60 NM
  - 295°-325° byd 15 NM blo 12,000'
  - 325°-018° byd 30 NM blo 7,000'
  - 326°-038° byd 40 NM

- TACAN AZIMUTH unusable:
- 060°-085° byd 21 NM blo 8,000'
  - 280°-335° byd 15 NM blo 14,000'
  - 335°-018° byd 15 NM blo 8,000'

- DME unusable:
- 280°-335° byd 15 NM blo 14,000'
  - 335°-018° byd 15 NM blo 8,000'



**BOB HOPE** (See BURBANK on page 122)

**BOB MAXWELL MEML AIRFIELD** (See OCEANSIDE on page 216)