

SAN FRANCISCO INTL (SFO)(KSFO) P (CG) 8 SE UTC-8(-7DT) N37°37.13' W122°22.53'

SAN FRANCISCO
H-3B, L-2F, 3B, A
IAP, AD

13 B LRA Class I, ARFF Index E NOTAM FILE SFO

RWY 10L-28R: H11870X200 (ASPH-GRVD) S-75, D-200, 2D-400,
2D/2D2-877 PCN 80 F/B/X/T HIRL CL

RWY 10L: REIL. PAPI(P4L)—GA 3.0° TCH 80'. RVR-TMR Tower.

RWY 28R: ALSF2. TDZL. PAPI(P4L)—GA 3.0° TCH 68'. RVR-TMR Thld
dsplcd 300'. Rgt tfc.

RWY 10R-28L: H11381X200 (ASPH-GRVD) S-75, D-200, 2D-400,
2D/2D2-877 PCN 80 F/B/X/T HIRL CL

RWY 10R: PAPI(P4L)—GA 3.0° TCH 68'. RVR-TMR Tower. Rgt tfc.

RWY 28L: MALSR. PAPI(P4L)—GA 2.85° TCH 67'. RVR-TMR Thld
dsplcd 300'.

RWY 01R-19L: H8650X200 (ASPH-GRVD) S-75, D-200, 2D-400,
2D/2D2-877 PCN 100F/B/X/T HIRL CL

RWY 01R: REIL. RVR-TMR Thld dsplcd 560'. Tree.

RWY 19L: MALSF. TDZL. PAPI(P4L)—GA 3.0° TCH 71'. RVR-TMR

RWY 01L-19R: H7650X200 (ASPH-GRVD) S-75, D-200, 2D-400,
2D/2D2-877 PCN 90 F/B/X/T HIRL CL

RWY 01L: REIL. RVR-TMR Thld dsplcd 640'.

RWY 19R: PAPI(P4L)—GA 3.15° TCH 58'. RVR-TMR

RUNWAY DECLARED DISTANCE INFORMATION

RWY 01L:TORA-7650 TODA-7650 ASDA-7650 LDA-7010

RWY 01R:TORA-8650 TODA-8650 ASDA-8650 LDA-8090

RWY 10L:TORA-11870 TODA-11870 ASDA-11193 LDA-11193

RWY 10R:TORA-11381 TODA-11381 ASDA-10704 LDA-10704

RWY 19L:TORA-8650 TODA-8650 ASDA-8650 LDA-8650

RWY 19R:TORA-7650 TODA-7650 ASDA-7650 LDA-7650

RWY 28L:TORA-11381 TODA-11381 ASDA-10981 LDA-10275

RWY 28R:TORA-11870 TODA-11870 ASDA-11870 LDA-11236

ARRESTING GEAR/SYSTEM

RWY 01L: EMAS

RWY 01R: EMAS

RWY 19L: EMAS

RWY 19R: EMAS

SERVICE: FUEL 100LL, JET A, A++ OX3, 4 MILITARY— A-GEAR Rwy 01L EMAS 413 x 227, Rwy 19R EMAS 437 x 227,
Rwy 01R EMAS 409 x 227, Rwy 19L EMAS 373 x 227. FUEL (100LL, A).

NOISE: Noise sensitive arpt. For noise abatement procedures ctc arpt noise office Monday-Friday 1600-0100Z† by calling
650-821-5100. NOTE: See Special Notices—Special Noise Abatement Procedures—Preferential Runways.

AIRPORT REMARKS: Attended continuously. Rwy 1L CLOSED to departing Trijet acft with wingspan greater than 155'. PAEW
AER 28L, Rwy 28R and Rwy 19L indef. Flocks of birds feeding along shoreline adjacent to arpt, on occasions fly across
various parts of arpt. Due to obstructed vision, SFO twr is able to provide only limited arpt tfc ctl svc on Twy A between
gates 88 and 89. Twr personnel are unable to determine whether this area is clear of tfc or obstructions. Due to obstd
vision, the twr is una to dtm if acft pulling into gate F11 are at the hook-up spot or in the gate. Rwy 10 preferred rwy
between 0900-1400Z† wx and fit conditions permitting. ASSC in use. Operate transponders with altitude reporting mode
and ADS-B (if equipped) enabled on all airport surfaces. Simultaneous ops in effect all rwys. Airline pilots shall strictly
follow the painted nose gear lines and no oversteering adjustment is permitted. All oudb Twy Zulu 2 heavy acft with a
wingspan of 171 ft or gtr under pwr prohibited from entering wb Twy Zulu. Twy S btn Twy Z and Twy S2 clsd to acft with
wingspan over 215 ft. Rwy status lgts in operation. Ldg fee. Flight Notification Service (ADCUS) available. NOTE: See
Special Notices—Special Noise Abatement Procedures—Preferential Runways.

AIRPORT MANAGER: (650) 821-3355

WEATHER DATA SOURCES: ASOS (650) 827-8593 LLWAS.

COMMUNICATIONS: D-ATIS 118.85 115.8 113.7 650-877-3585/8422 UNICOM 122.95

Ⓡ NORCAL APP CON 120.9 135.1 128.325

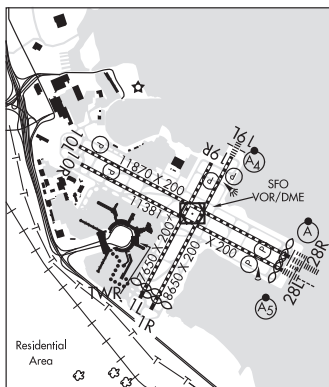
TOWER 120.5 GND CON 121.8 CLNC DEL 118.2 PRE TAXI CLNC 118.2

Ⓡ NORCAL DEP CON 128.325 133.95 134.5 135.1 (SE-W) 120.9 (NW-E)

CPDLC (LOGON KUSA)

PDC

AIRSPACE: CLASS B See VFR Terminal Area Chart.



CONTINUED ON NEXT PAGE

CONTINUED FROM PRECEDING PAGE

VOR TEST FACILITY (VOT) 111.0

RADIO AIDS TO NAVIGATION: NOTAM FILE SFO.

(VL) (L) VORW/DME 115.8 SFO Chan 105 N37°37.17' W122°22.43' at fld. 6/17E.

VOR unusable:

025°-065° byd 30 NM blo 18,000'
 035°-055° byd 12 NM blo 6,500'
 121°-281° byd 40 NM
 150°-190° byd 25 NM blo 4,500'
 190°-260° byd 10 NM blo 4,500'
 260°-295° byd 35 NM blo 3,000'
 282°-292° byd 40 NM blo 6,000'
 282°-292° byd 46 NM
 293°-336° byd 40 NM
 295°-330° byd 20 NM blo 8,000'
 337°-348° byd 40 NM blo 8,000'
 337°-348° byd 80 NM
 355°-102° byd 40 NM

DME unusable:

025°-065° byd 30 NM blo 18,000'
 035°-055° byd 12 NM blo 6,500'
 150°-190° byd 25 NM blo 4,500'
 190°-260° byd 10 NM blo 4,500'
 260°-295° byd 35 NM blo 3,000'
 295°-330° byd 20 NM blo 8,000'

ILS/DME 108.9 I-SIA Chan 26 Rwy 19L. Class IE. Ry 19L glideslope deviations are possible when critical areas are not required to be protected. Acft operating in vol glideslope transmitter. Pilots should be alert for momentary localizer course excursions due to LARGE aircraft operating in vicinity of localizer antenna.

ILS/DME 109.55 I-SFO Chan 32(Y) Rwy 28L. Class IIE.

ILS/DME 111.7 I-GWQ Chan 54 Rwy 28R. Class IIIE.

SAN GABRIEL VALLEY (See EL MONTE on page 149)
