

## SANTA ANA

JOHN WAYNE/ORANGE CO (SNA)(KSNA) 4 S UTC-8(-7DT) N33°40.54' W117°52.09'

LOS ANGELES

56 B TPA—See Remarks Class I, ARFF Index C NOTAM FILE SNA MON Airport

COPTER

RWY 02L-20R: H5700X150 (ASPH-GRVD) S-70, D-200, 2S-121,

H-4I, L-3E, 4H, A

2D-300 PCN 89 F/B/X/T HIRL 0.3% up S

IAP, AD

RWY 02L: PAPI(P4L)—GA 3.0° TCH 75'. RVR-R

RWY 20R: MALS.R. PAPI(P4L)—GA 3.0° TCH 68'. RVR-T Rgt tfc.

RWY 02R-20L: H2886X75 (ASPH-GRVD) S-25, D-60

PCN 72 F/B/X/T MIRL 0.4% up S

RWY 02R: Rgt tfc.

RWY 20L: REIL. PAPI(P4L)—GA 3.0° TCH 26'. Bldg.

## RUNWAY DECLARED DISTANCE INFORMATION

RWY 02L:TORA-5700 TODA-5700 ASDA-5700 LDA-5700

RWY 20R:TORA-5700 TODA-5700 ASDA-5700 LDA-5700

SERVICE: S4 FUEL 100LL, JET A OX 3, 4 LGT When twr clsd

ACTIVATE MALS.Rw 20R and PAPI Rwy 02L, and Rwy 20R—CTAF.

NOISE: Noise abatement procedures in effect contact arpt noise office 949-252-5185. Maintain at or above 300' AGL until established on final.

**AIRPORT REMARKS:** Attended continuously. Rwy 02R-20L CLSD when ATCT clsd. Be alert to birds on and in/ov arpt. VFR Acft: To avoid overflight of Rwy 20R, Rwy 20L arrs fly final at 15 deg angle to rwy; Rwy 20L depts turn 15 deg left at dep end of rwy. To avoid overflight of Rwy 02L, Rwy 02R depts turn 15 deg right at dep end of rwy. Acft ldg Rwy 20L, use ctn for jet blast from acft hldg btn Rwy 20L and Rwy 20R at Twy L. ASDE-X in use. Operate transponders with altitude reporting mode and ADS-B (if equipped) enabled on all airport surfaces. Rwy 02R-20L not avbl for sked acr opns with more than 9 psgr seats or unsked acr opns with at least 31 psgr seats. Rwy 02L-20R TPA—1056 (1000) small acft; 1556 (1500) turbine acft over 12500 lbs; Rwy 02R-20L TPA—856 (800) small sgl eng acft, 1056 (1000) twin eng acft. FBO general aviation aprons limited to max gwt of 100,000 lbs (dual gear) and with wingspans less than 100'. General aviation acft prohibited from using any portion of the air carrier commercial ramp. When twr clsd no local training or touch and go operations. Overnight tie-down fee. User fee arpt.

AIRPORT MANAGER: 949-252-5171

WEATHER DATA SOURCES: ASOS (714) 424-0590 LAWRS (1400-0700Z‡).

COMMUNICATIONS: CTAF 126.8 D-ATIS 126.0 714-546-2279 UNICOM 122.95

SANTA ANA RCO 122.45 (RIVERSIDE RADIO)

Ⓡ SOCIAL APP CON 121.3

TOWER 119.9 (Rwy 02R-20L) 126.8 (Rwy 02L-20R) 128.35 (1415-0700Z‡)

GND CON 120.8 CLNC DEL 118.0 121.85

Ⓡ SOCIAL DEP CON 124.1 128.1 132.7

CPDLC (LOGON KUSA)

PDC

CLEARANCE DELIVERY PHONE: For CD when ATCT clsd ctc SoCal Apch at 800-448-3724.

AIRSPACE: CLASS C svc ctc APP CON svc 1415-0700Z‡ other times CLASS G.

VOR TEST FACILITY (VOT) 110.0

RADAR AIDS TO NAVIGATION: NOTAM FILE SLI.

SEAL BEACH (L) (L) VORTACW 115.7 SLI Chan 104 N33°47.00' W118°03.29' 110° 11.3 NM to fld. 22/15E.

VOR unusable:

125°-180° byd 30 NM blo 4,000'

TACAN AZIMUTH unusable:

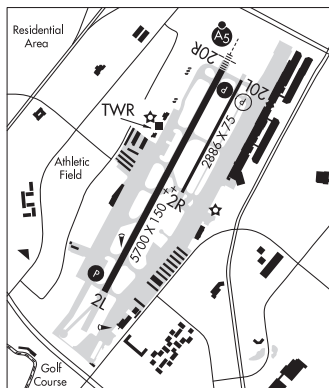
125°-195° byd 20 NM blo 5,000'

DME unusable:

125°-195° byd 20 NM blo 5,000'

ILS/DME 111.75 I-SNA Chan 54(Y) Rwy 20R. Class IE. Unmonitored when ATCT closed.

LDA/DME 108.3 I-OJW Chan 20 Rwy 20X. LDA unmonitored when ATCT clsd. Ry 20X created to support OJW LDA associated with SNA ILS Rwy 20R.



SANTA BARBARA HUG N34°22.60' W120°10.11' /152

LOS ANGELES

AWOS-3 119.625 (805) 961-4256 Private owner: Offshore Harmony platform