

PUEBLO MEML (PUB)(KPUB) 5 E UTC-7(-6DT) N38°17.40' W104°29.88'

4729 B Class I, ARFF Index A NOTAM FILE PUB

RWY 08R-26L: H10498X150 (ASPH-GRVD) S-75, D-170, 2D-250

HIRL

RWY 08R: MALSR. PAPI(P4L)—GA 3.0° TCH 63'. Rgt tfc.

RWY 26L: REIL. PAPI(P4L)—GA 3.0° TCH 62'. 0.4 % up..

RWY 17-35: H8310X150 (ASPH-GRVD) S-93, D-110, 2S-140, 2D-170 MIRL

RWY 17: REIL. PAPI(P4L)—GA 3.0° TCH 54'. 1.0% down..

RWY 35: REIL. PAPI(P4L)—GA 3.0° TCH 48'. 0.9% up..

RWY 08L-26R: H4690X75 (ASPH-GRVD) S-20, 2S-175 MIRL

RWY 08L: REIL. PAPI(P4L)—GA 3.0° TCH 40'.

RWY 26R: REIL. PAPI(P4L)—GA 3.0° TCH 40'.

LAND AND HOLD—SHORT OPERATIONS

LDG RWY	HOLD—SHORT POINT	AVBL LDG DIST
RWY 17	08L-26R	4700
RWY 26L	17-35	8300

RUNWAY DECLARED DISTANCE INFORMATION

RWY 08L:TORA-4690 TODA-4690 ASDA-4690 LDA-4690

RWY 08R:TORA-10496 TODA-10496 ASDA-10496 LDA-10496

RWY 17: TORA-8308 TODA-8308 ASDA-8308 LDA-8308

RWY 26L:TORA-10496 TODA-10496 ASDA-10496 LDA-10496

RWY 26R:TORA-4690 TODA-4690 ASDA-4690 LDA-4690

RWY 35: TORA-8308 TODA-8308 ASDA-8308 LDA-8308

SERVICE: S4 **FUEL** 100LL, JET A **OX3** **LGT** When twr clsd **ACTIVATE** MALSR Rwy 08R; REIL Rwy 08L, Rwy 17, Rwy 26R, Rwy 26L, Rwy 35; PAPI Rwy 08R, Rwy 08L, Rwy 17, Rwy 26R, Rwy 26L, Rwy 35; HIRL Rwy 08R-26L; MIRL Rwy 17-35, Rwy 08L-26R—CTAF.

AIRPORT REMARKS: Attended 1200-0500Z†. Conditions not monitored 0500-1200Z†. For fuel after hrs call 719-948-3316 or use 100LL self-svc. Be alert, intensive USAF student training invof Colorado Springs and Pueblo Colorado. Rwy 08L-26R avbl to acft under 20,000 lbs during dalgt and night hrs. Twy A between Twy A2 and A6 50' wide. Ramp-taxi lane E extd 30 ft wide fm east ramp to Twy E7. High volume training DA-20 acft Mon-Fri SR-SS. Overhead pat during training. Extensive use of training area 12-28 DME north to southwest of arpt 500' AGL to 8500' MSL Mon-Fri SR-SS. See Special Notices—USAF 306 FTG Flight Training Areas, Vicinity of Colorado Springs and Pueblo Colorado.

AIRPORT MANAGER: 719-553-2744

WEATHER DATA SOURCES: ASOS (719) 948-2803

COMMUNICATIONS: CTAF 119.1 ATIS 125.25 UNICOM 122.95

RCO 122.2 (DENVER RADIO)

Ⓡ DENVER APP/DEP CON 120.1 (1300-0500Z‡)

Ⓡ DENVER CENTER APP/DEP CON 128.375 (0500-1300Z‡)

TOWER 119.1 (1300-0500Z‡) GND CON 121.9 CLNC DEL 120.9

CLEARANCE DELIVERY PHONE: For CD ctc Pueblo Apch at 303-342-1916, when Apch clsd ctc Denver ARTCC at 303-651-4257.

AIRSPACE: CLASS D svc 1300-0500Z‡; other times CLASS E.

RADIO AIDS TO NAVIGATION: NOTAM FILE PUB.

(VH) (H) VORTACW 116.7 PUB Chan 114 N38°17.66' W104°25.77' 257° 3.2 NM to fld. 4756/8E.

VOR unusable:

000°-030° byd 40 NM

215°-227° byd 40 NM blo 16,000'

215°-227° byd 62 NM

228°-240° byd 40 NM blo 18,000'

280°-340° byd 40 NM

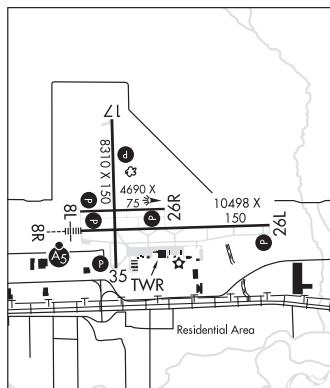
341°-348° byd 40 NM blo 18,000'

349°-359° byd 40 NM blo 9,000'

349°-359° byd 61 NM

ILS 109.5 I-PUB Rwy 08R. Class IE. Unmonitored when ATCT closed.

ILS 108.3 I-TFR Rwy 26L. Class IA. Unmonitored when ATCT closed.



DENVER

H-5A, L-10F

IAP, AD