

**POLACCA** (P1Ø) 3 SW UTC-7 N35°47.50' W110°25.40'  
5573 TPA-6398(825) NOTAM FILE PRC  
**RWY 04-22:** H4200X50 (ASPH) 0.3% up NE

**DENVER**  
L-8G

**RWY 04:** Brush.  
**RWY 22:** Brush.

**AIRPORT REMARKS:** Unattended. Rwy 04-22 has numerous large cracks, holes, rough surface, patches and loose rock, 8 in to 10 in high grass and weeds in cracks. Rocks piled, in circle, around wind indicator. Rwy 04-22, 1-5' brush 45' from centerline both sides full length of rwy. Rwy 04 centerline markings only—extremely faded. Rwy 22 centerline markings only—extremely faded. Road crossing rwy. Wash in safety zone. This airport underlies a Military Operations Area (MOA). Pilots need to be aware of all restrictions and check for any NOTAMS in advance of flying through the MOA. Solar powered blue perimeter lights at corners of parking ramp.

**AIRPORT MANAGER:** (928) 734-3243

**COMMUNICATIONS:** CTAF 122.9

**CLEARANCE DELIVERY PHONE:** For CD ctc Denver ARTCC at 303-651-4257.

**RADIO AIDS TO NAVIGATION:** NOTAM FILE PRC.

**TUBA CITY (H) (H) VORTAC** 113.5 TBC Chan 82 N36°07.28' W111°16.18' 100° 45.7 NM to fld. 5045/15E.

**PRESCOTT RGNL – ERNEST A LOVE FLD** (PRC)(KPRC) 7 N UTC-7 N34°39.29' W112°25.15'  
5045 B TPA—See Remarks ARFF Index—See Remarks NOTAM FILE PRC MON Airport

**PHOENIX**  
H-4J, L-8F  
IAP, AD

**RWY 03R-21L:** H7619X150 (ASPH-PFC) S-63, D-80, 2S-101,  
2D-100 PCN 8 F/D/Y/T MIRL 0.9% up SW  
**RWY 03R:** REIL. PAPI(P4L)—GA 4.1° TCH 45'. Thld dspcd 380'.  
Road.

**RWY 21L:** MALSR. PAPI(P4L)—GA 3.0° TCH 55'. Rgt tfc.

**RWY 03L-21R:** H4846X60 (ASPH) S-12.5 PCN 2 F/D/X/T MIRL  
0.8% up SW

**RWY 03L:** PAPI(P2L)—GA 3.0° TCH 35'. Thld dspcd 811'. Rgt tfc.

**RWY 21R:** PAPI(P2L)—GA 3.0° TCH 48'. Rgt tfc.

**RWY 12-30:** H4408X75 (ASPH) S-12.5 PCN 10 F/C/Y/T MIRL  
0.6% up SE

**RWY 12:** REIL. PAPI(P2L)—GA 4.24° TCH 52'. Thld dspcd 150'.

**RWY 30:** REIL. PAPI(P2L)—GA 3.6° TCH 44'.

**LAND AND HOLD—SHORT OPERATIONS**

LDG RWY	HOLD—SHORT POINT	AVBL LDG DIST
RWY 21L	12-30	5904

**RUNWAY DECLARED DISTANCE INFORMATION**

<b>RWY 03L:</b> TORA-4846 TODA-4846 ASDA-4846 LDA-4037
<b>RWY 03R:</b> TORA-7619 TODA-7619 ASDA-7619 LDA-7240
<b>RWY 12:</b> TORA-4408 TODA-4408 ASDA-4408 LDA-4258
<b>RWY 21L:</b> TORA-7619 TODA-7619 ASDA-7619 LDA-7619
<b>RWY 21R:</b> TORA-4846 TODA-4846 ASDA-4608 LDA-4608
<b>RWY 30:</b> TORA-4408 TODA-4408 ASDA-4258 LDA-4308

**SERVICE:** S4 **FUEL** 100LL, JET A **LGT** Rwy 30 PAPI unusable byd 3 NM. After 0500Z—ACTIVATE MALSR Rwy 21L, REIL Rwy 03R, PAPI Rwy 03R and Rwy 21L—CTAF. ACTIVATE REIL Rwy 12 and Rwy 30, PAPI Rwy 12 and Rwy 30, MIRL Rwy 12-30—128.75.

**NOISE:** Voluntary noise abatement procedures in effect—ctc aprt opr 928-777-1150.

**AIRPORT REMARKS:** Attended 1300-0500Z. Fuel avbl 1400-0400Z call 928-443-9333. After hrs avbl per advance request. Self svc fuel rstd to acft with wingspan 50' or less. Rwy 03L-21R CLOSED 0500-1300Z. Wildlife invov rwys and twys. Fld cond not monitored 2200-0500 local. Class I, ARFF Index A. ARFF Index B available upon request. Acft depg Rwy 21L continue rwy heading until across hwy and make immediate left turn. 20' drop-off 300' from apch end Rwy 12. Rwy 21L designated calm wind rwy. Use caution on Rwy 12-30 for chg in rwy grad at Rwy 03R-21L int. Rwy 03L-21R not avbl for air carrier ops. Twy B rstd to acft with wingspan 45' or less. Winch tow in use up to 2500' AGL approximately 6 NM east at Goodwin Memorial Gliderport. Overnight parking fee. ILS unmon when tower clsd. TPA for light acft all rwys 6045(1000). TPA for large acft, all turbo prop/jet and high performance acft all rwys 6545(1500). Ldg fee for tran commercial acr 12,500 lbs or greater based upon maximum certificated ldg weight. NOTE: See Special Notices—Extensive Flight Training in the vicinity of Ernest A. Love Field, Prescott, AZ.

**AIRPORT MANAGER:** (928) 777-1114

**WEATHER DATA SOURCES:** ASOS 127.2 (928) 541-3850.

**COMMUNICATIONS:** CTAF 125.3 ATIS 127.2 UNICOM 122.95

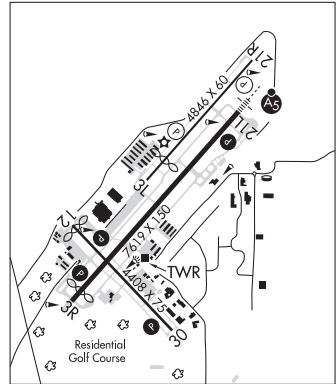
**PRESCOTT RCO** 122.2 (PRESCOTT RADIO)

® **PHOENIX APP/DEP CON** 133.575

**PRESCOTT TOWER** 125.3 (1300-0500Z) **GND CON** 121.7 **PRESCOTT CLNC DEL** 119.25

**CLEARANCE DELIVERY PHONE:** For CD when ATCT clsd, ctc Phoenix Apch at 602-306-2565.

**AIRSPACE:** CLASS D svc 1300-0500Z; other times CLASS E.



CONTINUED ON NEXT PAGE

## CONTINUED FROM PRECEDING PAGE

VOR TEST FACILITY (VOT) 110.0

RADIO AIDS TO NAVIGATION: NOTAM FILE PRC.

**DRAKE (VH) (H) VORTACW** 114.1 DRK Chan 88 N34°42.15' W112°28.82' 119° 4.2 NM to fld. 4966/14E.

VOR unusable:

055°-080° byd 29 NM blo 9,300'  
 065°-079° byd 40 NM blo 22,000'  
 125°-140° byd 35 NM blo 8,500'  
 128°-230° byd 40 NM  
 140°-160° byd 30 NM blo 9,500'  
 160°-175° byd 35 NM blo 9,500'  
 175°-185° byd 30 NM blo 9,500'  
 185°-195° byd 23 NM blo 9,100'  
 195°-220° byd 13 NM blo 9,100'  
 220°-235° byd 25 NM blo 9,100'  
 233°-243° byd 40 NM blo 18,000'  
 265°-275° byd 30 NM blo 8,800'  
 266°-274° byd 40 NM

TACAN AZIMUTH unusable:

055°-080° byd 29 NM blo 9,300'  
 125°-140° byd 35 NM blo 8,500'  
 140°-160° byd 30 NM blo 9,500'  
 160°-175° byd 35 NM blo 9,500'  
 175°-185° byd 30 NM blo 9,500'  
 185°-195° byd 23 NM blo 9,100'  
 195°-220° byd 13 NM blo 9,100'  
 220°-235° byd 25 NM blo 9,100'  
 265°-275° byd 30 NM blo 8,800'

DME unusable:

055°-080° byd 29 NM blo 9,300'  
 125°-140° byd 35 NM blo 8,500'  
 140°-160° byd 30 NM blo 9,500'  
 160°-175° byd 35 NM blo 9,500'  
 175°-185° byd 30 NM blo 9,500'  
 185°-195° byd 23 NM blo 9,100'  
 195°-220° byd 13 NM blo 9,100'  
 220°-235° byd 25 NM blo 9,100'  
 265°-275° byd 30 NM blo 8,800'

**ILS/DME** 108.5 I-PRC Chan 22 Rwy 21L. Class IA. ILS/DME unmonitored 0500-1300Z.

**ROBLES** N32°04.46' W111°21.61' NOTAM FILE PRC.

**NDB (MHW)** 220 RBJ 2611/12E. NDB unmonitored.

PHOENIX

L-5C

**ROLLE AIRFIELD** (See SAN LUIS on page 82)

**RYAN FLD** (See TUCSON on page 95)