

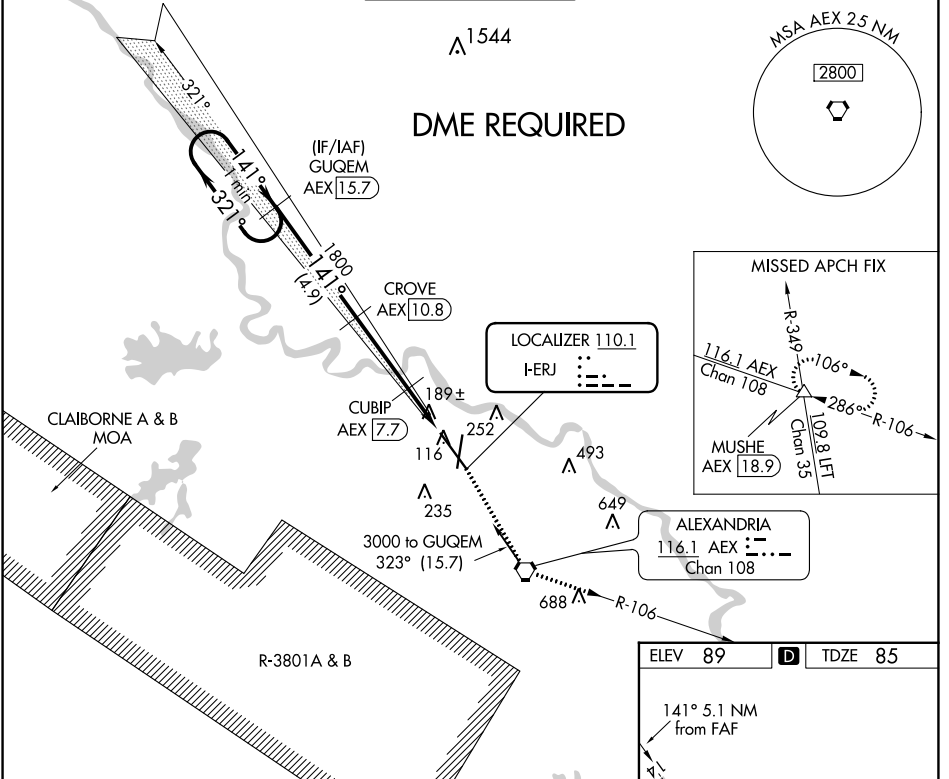
LOC I-ERJ 110.1	APP CRS 141°	Rwy Idg 9352 TDZE 85 Apt Elev 89
---------------------------	------------------------	---

ILS or LOC RWY 14

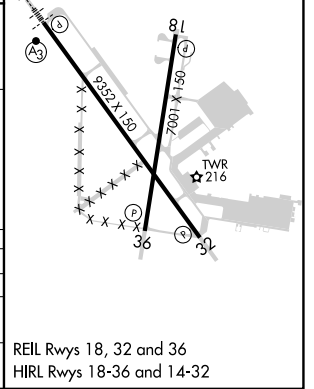
ALEXANDRIA INTL (AEX)

<p>▼ DME from AEX VORTAC. Simultaneous reception of I-ERJ and AEX DME required. When R-3801 B active, RADAR and DME required. DME required.</p>	<p>SSALR As</p>	<p>MISSED APPROACH: Climb to 4000 direct AEX VORTAC and on AEX VORTAC R-106 to MUSHE INT/18.9 DME and hold.</p>
--	----------------------------	--

ASOS 123.975	POLK APP CON 125.4 254.8	ALEXANDRIA TOWER 127.35 (CTAF) 269.2	GND CON 121.9 372.0	CLNC DEL 121.9
------------------------	------------------------------------	--	-------------------------------	--------------------------



One Minute Holding Pattern	GUGEM AEX 15.7	4000	AEX	AEX R-106	MUSHE
3000	← 321°	→ 141°	← 141°	→ 1800	*LOC only.
GS 3.00° TCH 56					
VGSI and ILS glidepath not coincident (VGSI Angle 3.00/TCH 71).					
	4.9 NM	3.1 NM	2 NM		
CATEGORY	A	B	C	D	
S-ILS 14		346/24	261 (300-½)		
S-LOC 14		460/24	375 (400-½)	460/40 375 (400-¾)	
CIRCLING	540-1 451 (500-1)	560-1 471 (500-1)	700-1¾ 611 (700-1¾)	860-2½ 771 (800-2½)	



SC-4, 07 SEP 2023 to 05 OCT 2023

SC-4, 07 SEP 2023 to 05 OCT 2023