

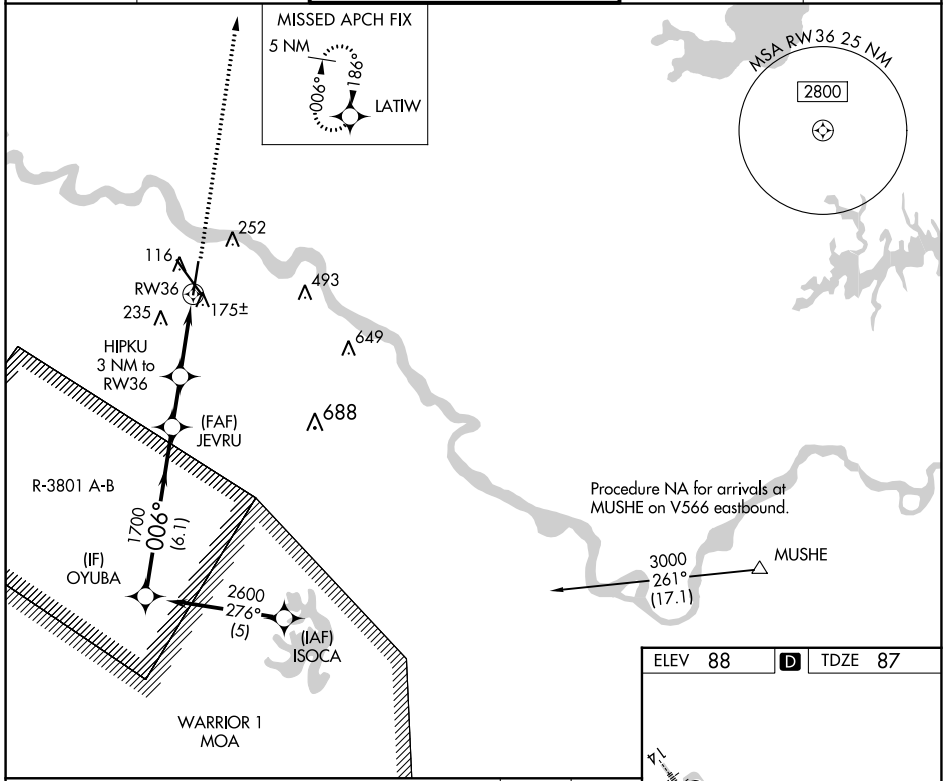
APP CRS	Rwy Idg	7001
006°	TDZE	87
	Apt Elev	88

RNAV (GPS) RWY 36

ALEXANDRIA INTL (AEX)

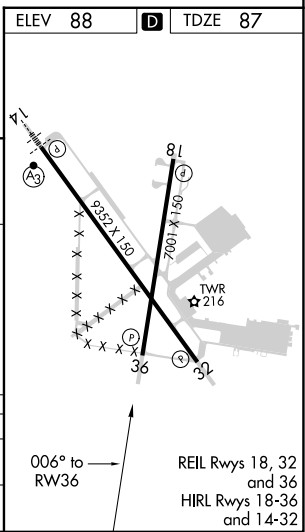
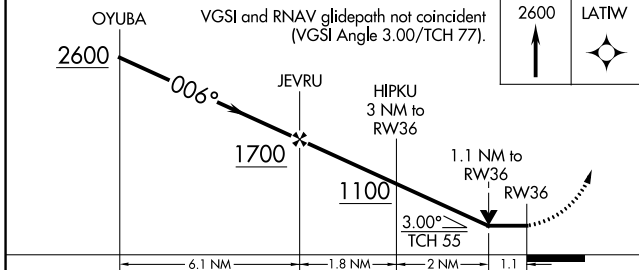
RNP APCH - GPS.	MISSED APPROACH: Climb to 2600 direct LATIW and hold.
<p>▼ Rwy 36 helicopter visibility reduction below 3/4 SM NA.</p> <p>▲ Procedure NA when R-3801 A-B in use.</p>	

ASOS 123.975	POLK APP CON 125.4 254.8	ALEXANDRIA TOWER 127.35 (CTAF) 269.2	GND CON 121.9 372.0	CLNC DEL 121.9
------------------------	------------------------------------	------------------------------------------------	-------------------------------	--------------------------



SC-4, 07 SEP 2023 to 05 OCT 2023

SC-4, 07 SEP 2023 to 05 OCT 2023



CATEGORY	A	B	C	D
RNAV MDA	500-1	413 (500-1)	500-1 1/8	413 (500-1 1/8)
CIRCLING	540-1 452 (500-1)	560-1 472 (500-1)	700-1 1/4 612 (700-1 1/4)	860-2 1/2 772 (800-2 1/2)