


LOC I-ABE 110.7	APP CRS 063°	Rwy Idg TDZE Apt Elev	7599 394 394
---------------------------	------------------------	-----------------------------	---

ILS or LOC RWY 6

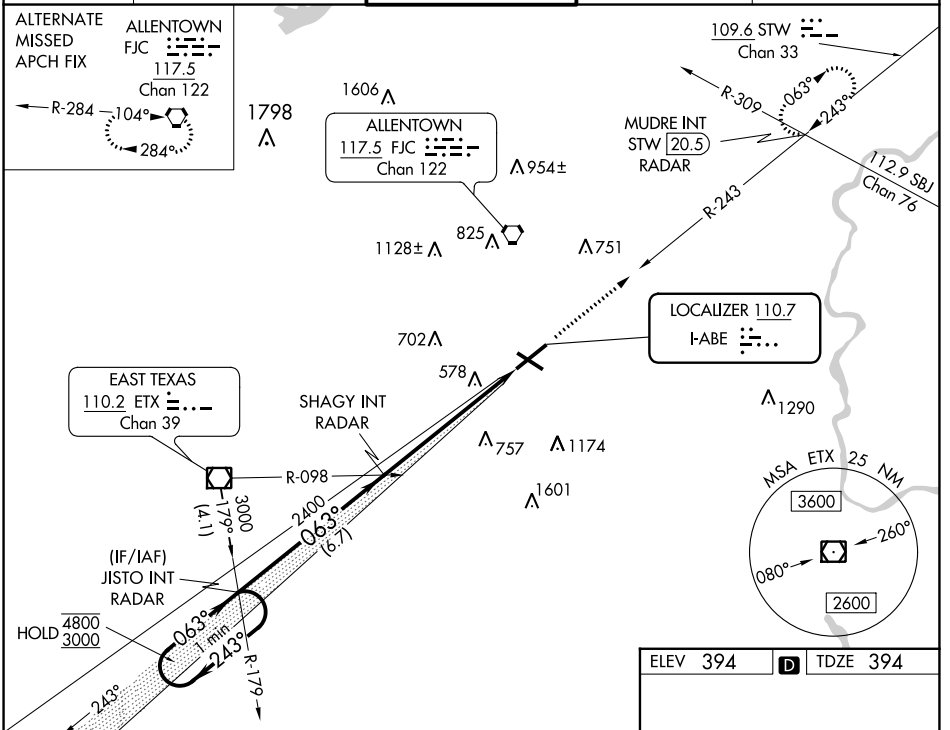
LEHIGH VALLEY INTL (ABE)

▽ *RVR 1800 authorized with use of FD or AP or HUD to DA.

△ MALSR 

MISSED APPROACH: Climb to 3000 on heading 063° and STW R-243 to MUDRE INT/STW 20.5 DME/RADAR and hold.

ATIS 126.975	ALLENTOWN APP CON 119.65 124.45 351.8	ALLENTOWN TOWER 120.5 257.95	GND CON 121.9 257.95	CLNC DEL 124.05 257.95
------------------------	---	--	--------------------------------	----------------------------------



VGSI and descent angles not coincident (VGSI Angle 3.00/TCH 74).

One Minute Holding Pattern

JSTO INT RADAR

SHAGY INT RADAR

3000
↑
hdg 063°

STW R-243

MUDRE INT

4800
3000

243°

063°

063°

GS 3.00° TCH 57

2400

6.7 NM

6.1 NM

CATEGORY	A	B	C	D
S-ILS 6*		594/24	200 (200-½)	
S-LOC 6	920/24	526 (600-½)	920/55	526 (600-1)
C CIRCLING	920-1	526 (600-1)	1180-2¼ 786 (800-2¼)	1600-3 1206 (1300-3)

ELEV 394 **D** TDZE 394

REIL Rws 24 and 31
HIRL Rws 6-24 and 13-31

FAF to MAP 6.1 NM

Knots	60	90	120	150	180
Min:Sec	6:06	4:04	3:03	2:26	2:02

NE-4, 07 SEP 2023 to 05 OCT 2023

NE-4, 07 SEP 2023 to 05 OCT 2023