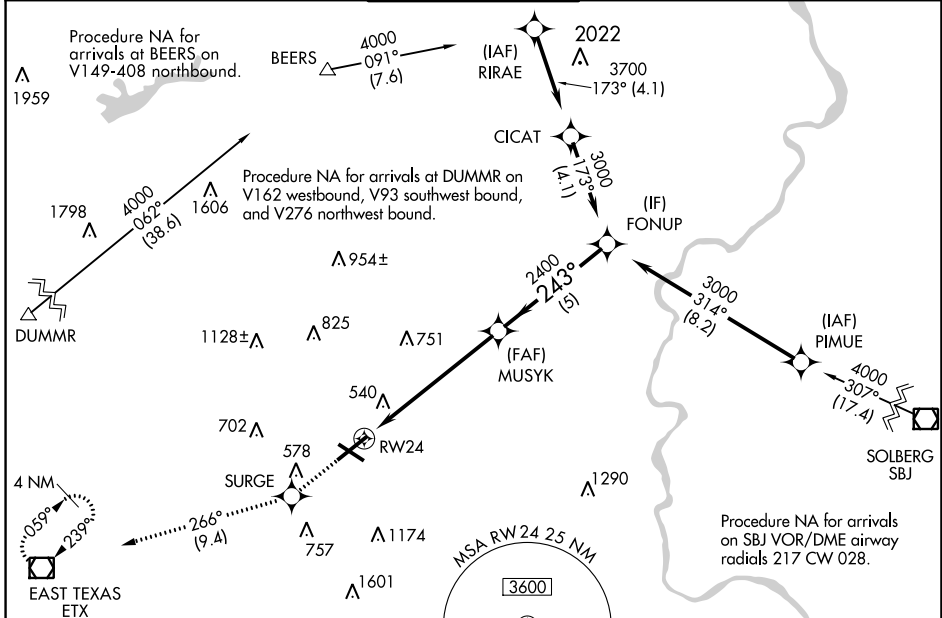


WAAS CH <b>40332</b> <b>W24A</b>	APP CRS <b>243°</b>	Rwy Idg TDZE Apt Elev	<b>7089</b> <b>387</b> <b>394</b>
--	------------------------	-----------------------------	---

# RNAV (GPS) RWY 24

LEHIGH VALLEY INTL (ABE)

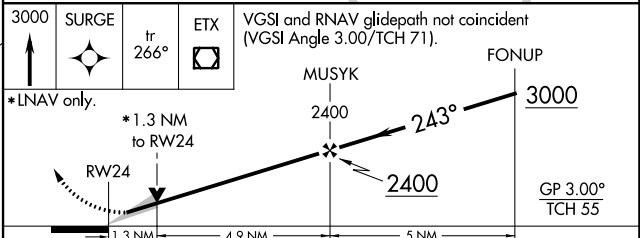
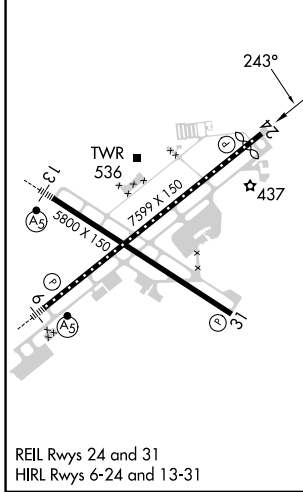
RNP APCH.		ALLENTOWN APP CON		ALLENTOWN TOWER		GND CON		CLNC DEL	
<p>▼ For uncompensated Baro-VNAV systems, LNAV/VNAV ▲ NA below -8°C (18°F) or above 54°C (130°F).</p>								<p>MISSED APPROACH: Climb to 3000 direct SURGE and on track 266° to ETX VOR/DME and hold.</p>	
ATIS <b>126.975</b>	<b>119.65</b>	<b>124.45</b>	<b>351.8</b>	<b>120.5</b>	<b>257.95</b>	<b>121.9</b>	<b>257.95</b>	<b>124.05</b>	<b>257.95</b>



NE-4, 07 SEP 2023 to 05 OCT 2023

NE-4, 07 SEP 2023 to 05 OCT 2023

ELEV 394	<b>D</b>	TDZE 387
----------	----------	----------



CATEGORY	A	B	C	D
LPV DA	587/40 200 (200-3/4)			
LNAV/VNAV DA	783-1 1/4 396 (400-1 1/4)			
LNAV MDA	860/55	473 (500-1)	860-1 3/8	473 (500-1 3/8)
<b>C</b> CIRCLING	900-1	506 (600-1)	1180-2 1/4 786 (800-2 1/4)	1600-3 1206 (1300-3)