

LOC I-AUG 108.7	APP CRS 171°	Rwy Idg 5002	TDZE 348
		Apt Elev 352	

ILS or LOC RWY 17

AUGUSTA STATE (AUG)

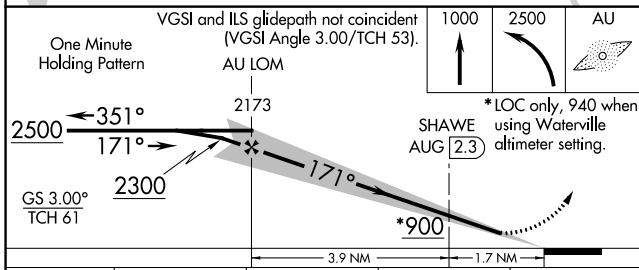
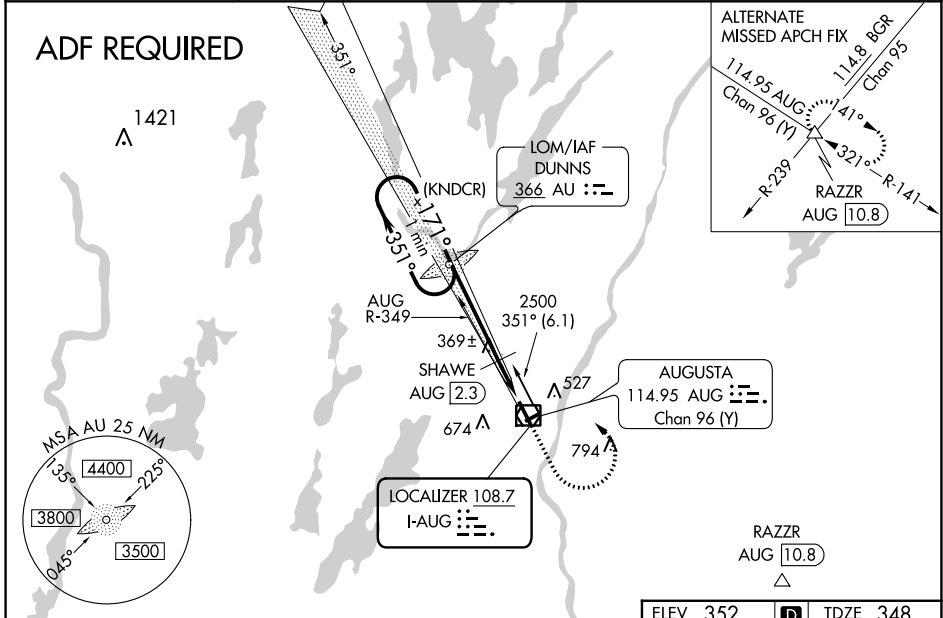
ADF REQUIRED. Localizer unusable from 0.5 NM to threshold above 1500 feet. When local altimeter setting not received, use Waterville altimeter setting; increase S-ILS 17 DA to 583; increase all MDAs 40 feet and visibility S-LOC 17 Cat C and D 1/8 SM, and Circling Cat D 1/4 SM; SHAWE fix minimums increase S-LOC 17 Cat C and D visibility 1/8 SM, and Circling Cat D visibility 1/4 SM. Glideslope unusable below 430 feet. When Circling to Rwy 8, 26 at night operational VGSI required remain on or above VGSI glidepath until threshold. % DME from AUG VOR/DME.

MALSR

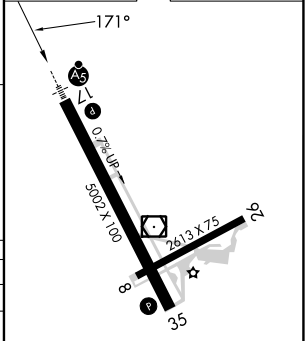


MISSED APPROACH:
Climb to 1000 then climbing left turn to 2500 direct DUNNS LOM and hold.

ASOS 118.325	PORTLAND APP CON ★ 128.35 299.2	CLNC DEL 119.95 299.2	UNICOM 123.0 (CTAF) 0
------------------------	---	---------------------------------	---------------------------------



ELEV 352	D	TDZE 348
----------	---	----------



CATEGORY	A	B	C	D
S-ILS 17		548-1/2	200 (200-1/2)	
S-LOC 17	900-1/2	552 (600-1/2)	900-1 1/4	552 (600-1 1/4)
C CIRCLING	940-1 588 (600-1)	980-1 628 (700-1)	980-1 3/4 628 (700-1 3/4)	1160-2 1/2 808 (900-2 1/2)
SHAWE FIX MINIMUMS %				
S-LOC 17		620-1/2	272 (300-1/2)	
C CIRCLING	940-1 588 (600-1)	980-1 628 (700-1)	980-1 3/4 628 (700-1 3/4)	1160-2 1/2 808 (900-2 1/2)

HIRL Rwy 17-35 0					
MIRL Rwy 8-26 0					
REIL Rwy 35 0					
FAF to MAP 5.6 NM					
Knots	60	90	120	150	180
Min:Sec	5:36	3:44	2:48	2:14	1:52

NE-1, 07 SEP 2023 to 05 OCT 2023

NE-1, 07 SEP 2023 to 05 OCT 2023