

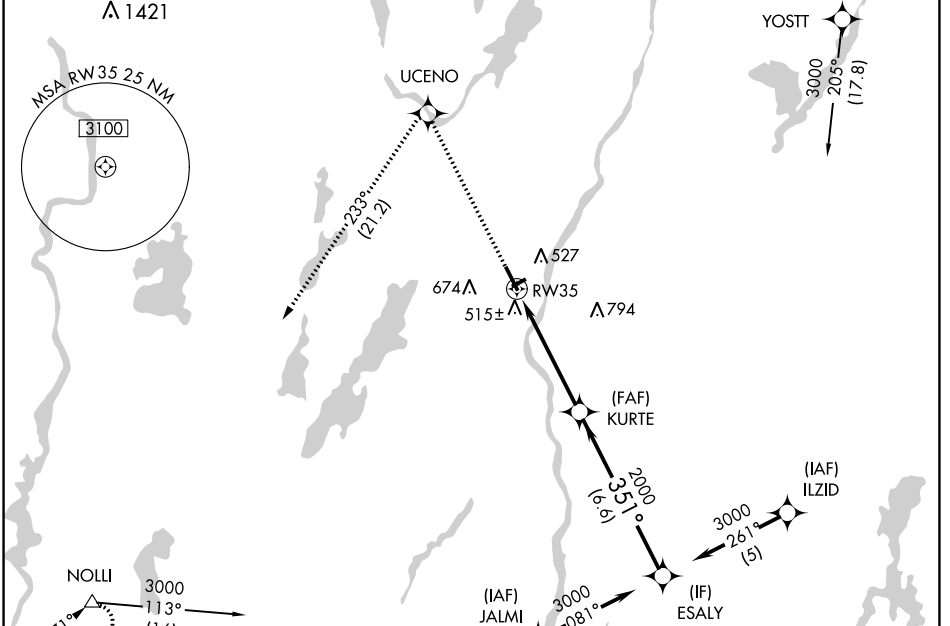
WAAS CH <b>70406</b> <b>W35A</b>	APP CRS <b>351°</b>	Rwy Idg TDZE Apt Elev	<b>5002</b> <b>350</b> <b>352</b>
--	------------------------	-----------------------------	---

# RNAV (GPS) RWY 35

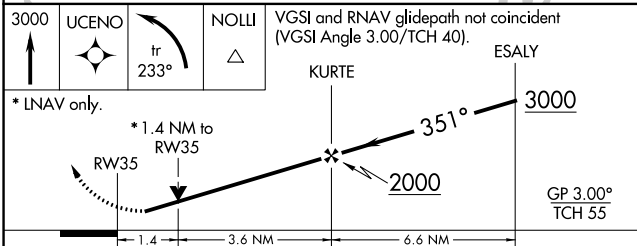
AUGUSTA STATE (AUG)

RNP APCH.	<p><b>⚠</b> Circling to Rwy 26 NA at night. Rwy 35 helicopter visibility reduction below 3/4 SM NA.  <b>⚠</b> For uncompensated Baro-VNAV systems, LNAV/VNAV NA below -15°C or above 54°C.</p>	MISSED APPROACH: Climb to 3000 direct UCENO and left turn on track 233° to NOLLI and hold.
-----------	--	--

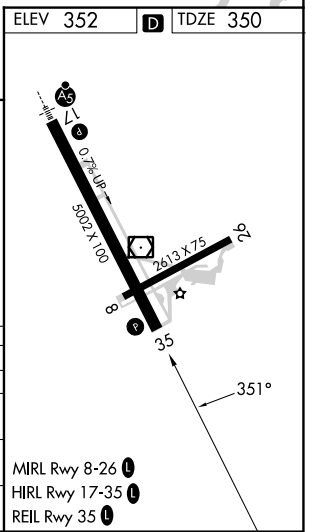
ASOS <b>118.325</b>	PORTLAND APP CON * <b>128.35 299.2</b>	CLNC DEL <b>119.95 299.2</b>	UNICOM <b>123.0 (CTAF)</b> <b>📻</b>
------------------------	---	---------------------------------	--



ELEV 352	<b>D</b> TDZE 350
----------	-------------------



CATEGORY	A	B	C	D
LPV DA	610-1 260 (300-1)			
LNAV/VNAV DA	850-1 3/4 500 (500-1 3/4)			
LNAV MDA	840-1 490 (500-1)	840-1 3/4 490 (500-1 3/4)	840-1 1/2 490 (500-1 1/2)	
CIRCLING	880-1 3/4 528 (600-1 3/4)	980-1 3/4 628 (700-1 3/4)	1160-2 1/2 808 (900-2 1/2)	



NE-1, 07 SEP 2023 to 05 OCT 2023

NE-1, 07 SEP 2023 to 05 OCT 2023