

(MARIC4.MARIC) 21112

MARIC FOUR DEPARTURE

AL-36 (FAA)

MEADOWS FLD (BFL)
BAKERSFIELD, CALIFORNIA

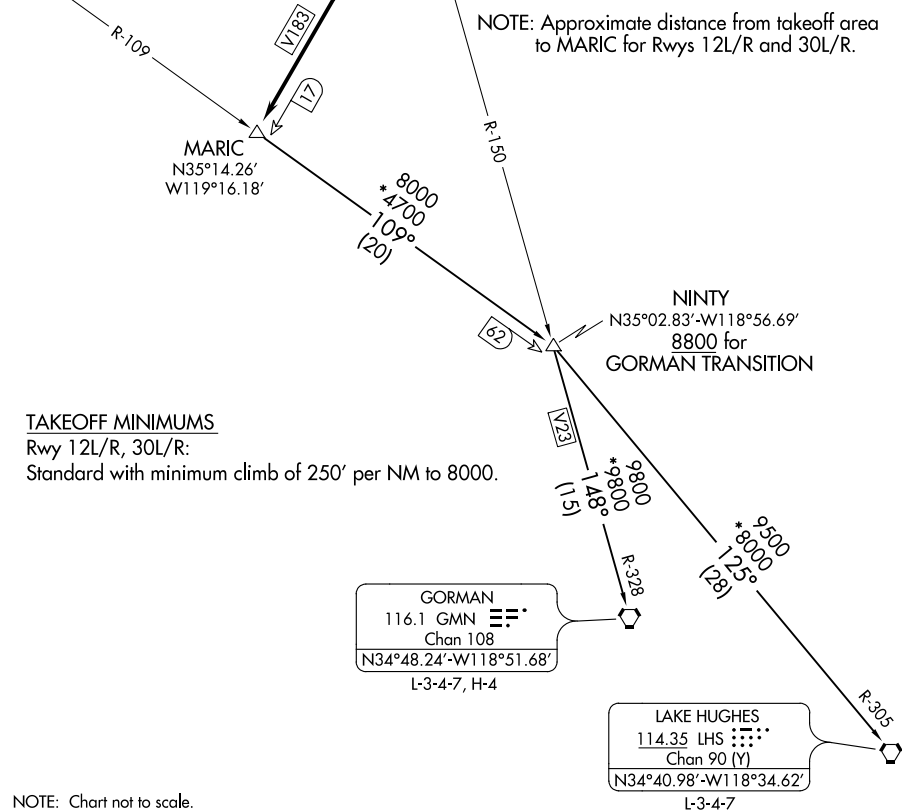
**TOP ALTITUDE:
ASSIGNED BY ATC**

AVENAL
117.1 AVE :--
Chan 118

R-196
SHAFTER
115.4 EHF :--
Chan 101

ATIS
118.6
GND CON
121.7
BAKERSFIELD TOWER*
118.1 257.8
BAKERSFIELD DEP CON*
126.45 270.3 (NORTH)
126.45 284.625 (SOUTH)

NOTE: Approximate distance from takeoff area to MARIC for Rwy 12L/R and 30L/R.



TAKEOFF MINIMUMS

Rwy 12L/R, 30L/R:

Standard with minimum climb of 250' per NM to 8000.

NOTE: Chart not to scale.



DEPARTURE ROUTE DESCRIPTION

TAKEOFF RUNWAYS 12L/R: Turn right heading 240°. Thence. . .

TAKEOFF RUNWAYS 30L/R: Turn left heading 240°. Thence. . .

. . . intercept and proceed on the EHF R-196 to MARIC. Thence via (transition) or (assigned route).

GORMAN TRANSITION (MARIC4.GMN): From over MARIC via AVE R-109 and GMN R-328 to GMN VORTAC.

LAKE HUGHES TRANSITION (MARIC4.LHS): From over MARIC via AVE R-109 and LHS R-305 to LHS VORTAC.

MARIC FOUR DEPARTURE

(MARIC4.MARIC) 26MAY16

BAKERSFIELD, CALIFORNIA
MEADOWS FLD (BFL)

SW-3, 07 SEP 2023 to 05 OCT 2023

SW-3, 07 SEP 2023 to 05 OCT 2023