

OILDALE ONE DEPARTURE

AL-36 (FAA)

MEADOWS FLD (BFL)
BAKERSFIELD, CALIFORNIA

**TOP ALTITUDE:
ASSIGNED BY ATC**

RADAR required.

ATIS
118.6
GND CON
121.7
BAKERSFIELD TOWER*
118.1 257.8
BAKERSFIELD DEP CON*
126.45 270.3 (NORTH)
126.45 284.625 (SOUTH)

PANOOCHE
112.6 PXN
Chan 73
N36°42.93' - W120°46.72'
L-3, H-3

AVENAL
117.1 AVE
Chan 118
N35°38.82' - W119°58.72'
L-3-7, H-4

MORRO BAY
112.4 MQO
Chan 71
N35°15.14' - W120°45.57'
L-3-7, H-4

FELLOWS
117.5 FLW
Chan 122
N35°05.59' - W119°51.93'
L-3-7, H-4

GUADALUPE
113.05 GLJ
Chan 129
N34°57.14' - W120°31.29'
L-3-4-7

SAN MARCUS
114.9 RZS
Chan 96
N34°30.57' - W119°46.26'
L-3-4-7, H-4

GORMAN
116.1 GMN
Chan 108
N34°48.24' - W118°51.68'
L-3-4-7, H-4

FILLMORE
112.5 FIM
Chan 72
N34°21.40' - W118°52.88'
L-3-4-7, H-4

SHAFTER
115.4 EHF
Chan 101
N35°29.07' - W119°05.84'
L-3-7, H-4

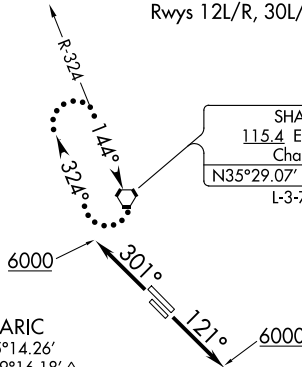
MARIC
N35°14.26' - W119°16.18'
L-3-7

AMONT
N35°11.03' - W118°45.32'
L-3-7, H-4

PALMDALE
115.55 PMD
Chan 102(Y)
N34°37.88' - W118°03.83'
L-3-4-7, H-4

LAKE HUGHES
114.35 LHS
Chan 90(Y)
N34°40.98' - W118°34.62'
L-3-4-7, H-4

TAKEOFF MINIMUMS
Rwys 12L/R, 30L/R: Standard.



NOTE: Chart not to scale.

DEPARTURE ROUTE DESCRIPTION

TAKEOFF RUNWAYS 12L/R: Climb on heading 121° to 6000 for vector to assigned route/fix. Thence. . .

TAKEOFF RUNWAYS 30L/R: Climb on heading 301° to 6000 for vector to assigned route/fix. Thence. . .

. . . maintain ATC assigned altitude. Expect clearance to requested altitude five minutes after departure.

LOST COMMUNICATIONS: If no radio contact for two minutes, proceed direct SHAFTER VORTAC and hold. Climb in holding pattern to expected altitude prior to proceeding on course.

OILDALE ONE DEPARTURE