

WAAS CH <b>78418</b> <b>W12A</b>	APP CRS <b>121°</b>	Rwy Idg <b>10849</b> TDZE <b>510</b> Apt Elev <b>510</b>
--	------------------------	--

# RNAV (GPS) RWY 12L

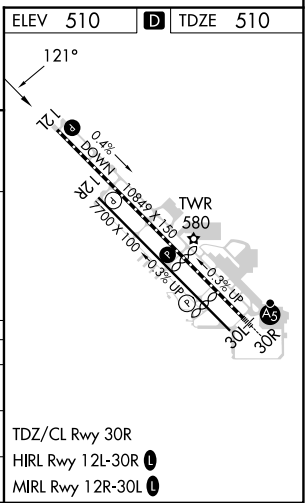
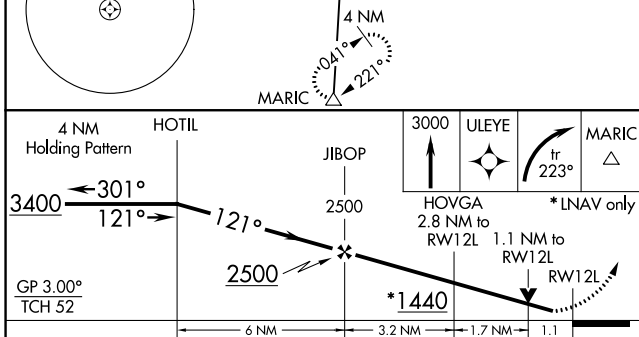
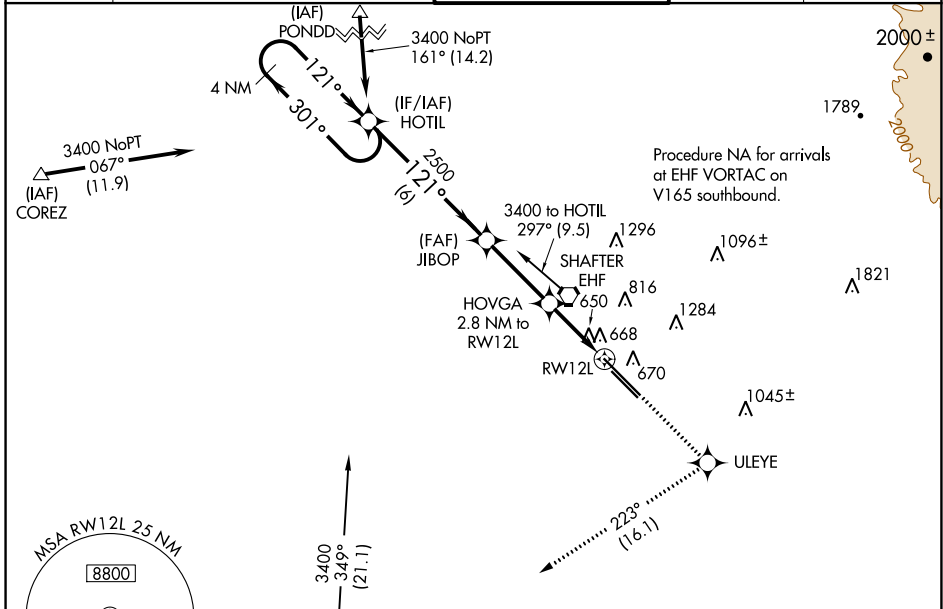
MEADOWS FLD (BFL)

RNP APCH.

Baro-VNAV NA when using Porterville altimeter setting. For uncompensated Baro-VNAV systems, LNAV/VNAV NA below -16°C or above 54°C. Rwy 12L helicopter visibility reduction below ¼ SM NA. When local altimeter setting not received, use Porterville altimeter setting and increase all DA 92 feet, all MDA 100 feet, increase LPV all Cats, LNAV/VNAV all Cats and LNAV Cats C/D visibility ¼ mile.

MISSED APPROACH: Climb to 3000 direct ULEYE and right turn on track 223° to MARIC and hold.

ATIS <b>118.6</b>	BAKERSFIELD APP CON * <b>118.8 284.625 118.9 270.3</b> (SOUTH) (NORTH)	BAKERSFIELD TOWER * <b>118.1 (CTAF) 257.8</b>	GND CON <b>121.7</b>	UNICOM <b>122.95</b>
----------------------	--	--	-------------------------	-------------------------



SW-3, 07 SEP 2023 to 05 OCT 2023

SW-3, 07 SEP 2023 to 05 OCT 2023