

WAAS CH 82440 W30B	APP CRS 301°	Rwy ldg TDZE 484 Apt Elev 510
--	------------------------	--

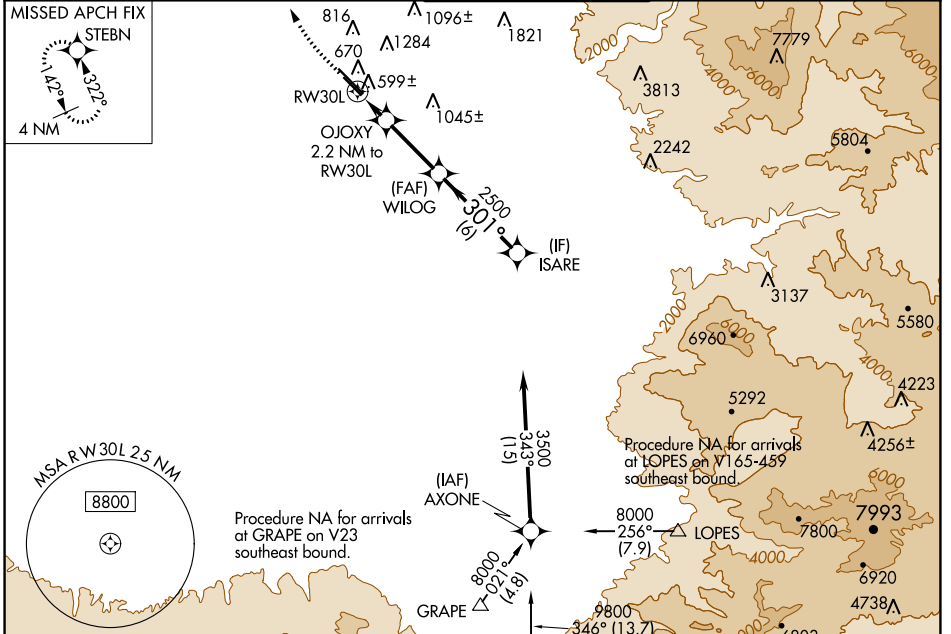
RNAV (GPS) RWY 30L

MEADOWS FLD (BFL)

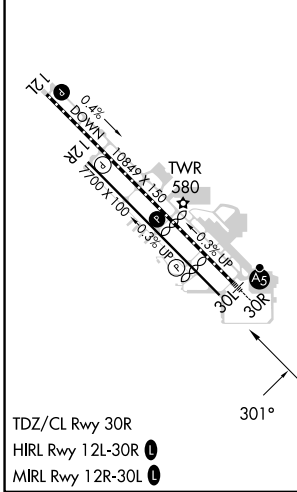
For uncompensated Baro-VNAV systems, LNAV/VNAV NA below -1°C (31°F) or above 54°C (130°F). Circling NA northeast of Rwy 12L-30R.
DME/DME RNP-0.3 NA.

MISSED APPROACH: Climb to 1000 then climbing right turn to 3000 direct STEBN and hold.

ATIS 118.6	BAKERSFIELD APP CON ★ 118.8 284.625 (SOUTH) 118.9 270.3 (NORTH)	BAKERSFIELD TOWER ★ 118.1 (CTAF) 257.8	GND CON 121.7	UNICOM 122.95
----------------------	--	---	-------------------------	-------------------------



ELEV 510	D	TDZE 484
-----------------	----------	-----------------



Procedure NA for arrivals at GRAPE on V23 southeast bound.

Procedure NA for arrivals at LOPES on V165-459 southeast bound.

Procedure NA for arrivals at GMN VORTAC on V238 southeast bound.

VGS1 and RNAV glidepath not coincident (VGS1 Angle 3.00/TCH 25).

ISARE

WILOG 2500

OJOXY 2.2 NM to RWY 30L

*LNAV only

*1.1 NM to RWY 30L

RWY 30L

1200*

301°

2500

3500

GP 3.00° TCH 50

CATEGORY	A	B	C	D
LPV DA		734-7/8	250 (300-7/8)	
LNAV/VNAV DA		797-1/8	313 (300-1/8)	
LNAV MDA		860-1	376 (400-1)	
C CIRCLING	960-1	450 (500-1)	960-1/2 450 (500-1/2)	1060-2 550 (600-2)