

COCOA BEACH, FLORIDA

ILS or LOC/DME RWY 21

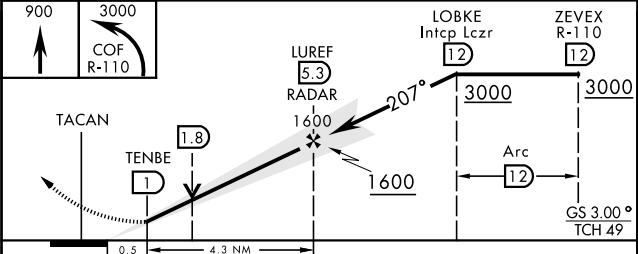
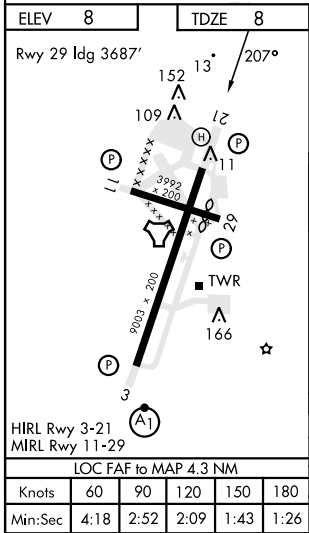
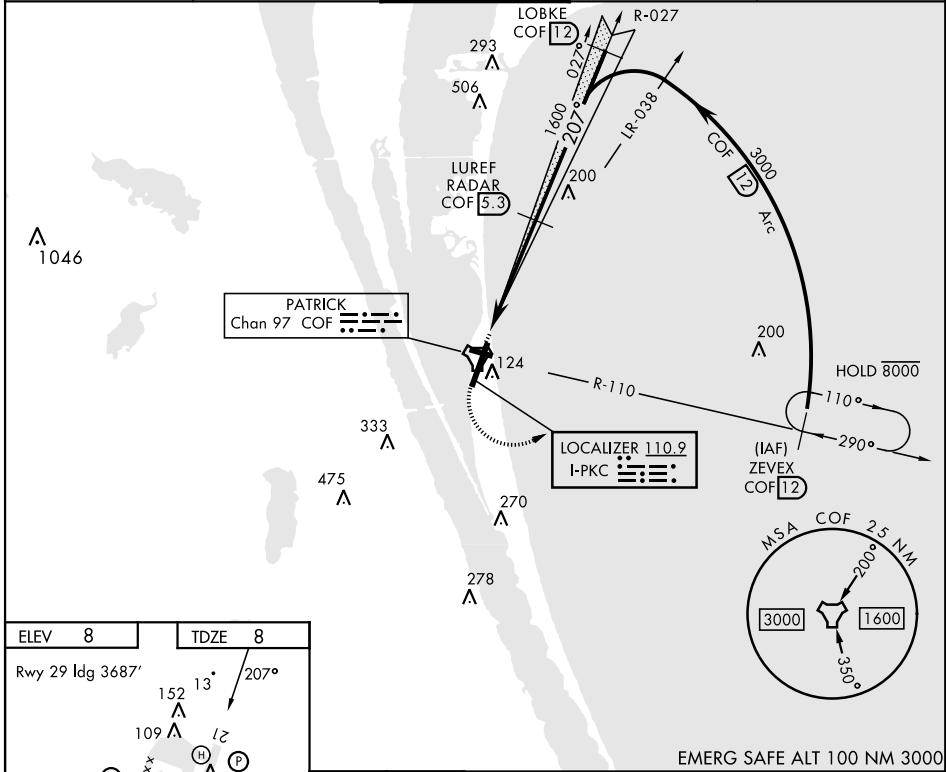
LOC I-PKC 110.9	APCH CRS 207°	Rwy Idg TDZE Arprt Elev 9003 8 8	AL-38 [USSF]	PATRICK SFB (KCOF)
---------------------------	-------------------------	--	--------------	--------------------

DME required.

▼ * When Rwy 29 VGSi inop, circling to Rwy 29 at night requires approval from MAJCOM Director of Operations or equivalent. Circling not authorized W of Rwy 3-21.

MISSED APPROACH: Climb to 900, then turn left, intercept the COF R-110 outbound direct ZEVEX, maintain 3000 and hold.

ATIS ★ 119.175 273.5	ORLANDO APP CON 132.65 281.425	TOWER ★ 133.75 269.375	GND CON 124.35 335.8	CLNC DEL 118.4 289.4
--------------------------------	--	----------------------------------	--------------------------------	--------------------------------



EMERG SAFE ALT 100 NM 3000	900	3000	COF R-110	LUREF RADAR 5.3	1600	207°	LOBKE Intcp Lcwr 12	3000	ZEVEX R-110 12	3000
TACAN	TENBE 1.8	1.8	1.600	1600	1600	Arc 12	GS 3.00°	TCH 49		
CATEGORY	A	B	C	D						
S-ILS 21	208/40		200	(200-34)						
S-LOC 21	460-1	452	500-1	460-1 1/2	452	500-1 1/2	560-2			
CIRCLING *	472	500-1	492	500-1	492	500-1 1/2	552	600-2		

COCOA BEACH, FLORIDA
Amdt 2 03NOV22

28° 14' N - 80° 37' W

PATRICK SFB (KCOF)

ILS or LOC/DME RWY 21

SE-3, 07 SEP 2023 to 05 OCT 2023

SE-3, 07 SEP 2023 to 05 OCT 2023