


ILS or LOC/DME RWY 3

LOC I-COF 109.1	APCH CRS 027°	Rwy ldg TDZE Arprt Elev 9003 6 8	AL-38 [USSF]	PATRICK SFB (KCOF)
---------------------------	-------------------------	--	--------------	--------------------

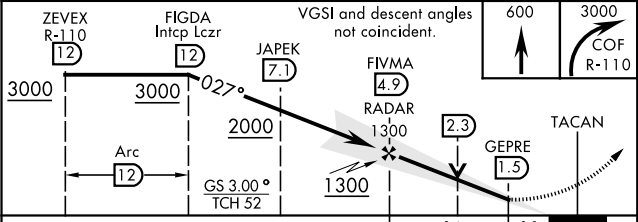
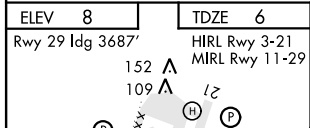
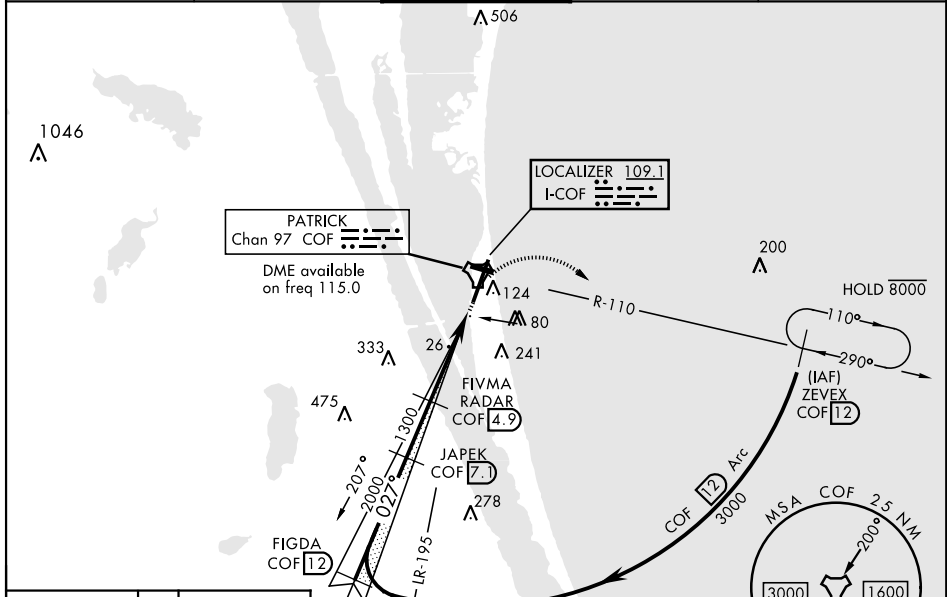
DME required.

- * When ALS inop increase RVR to 40 and vis to ¾ mile.
- ** When ALS inop, increase CAT AB RVR to 55 and vis to 1 mile, CAT CD vis to 1 ¼ miles.
- *** Circling not authorized W of Rwy 3-21. When Rwy 29 VGSi inop, circling to Rwy 29 NA at night. USAF only: When Rwy 29 VGSi inop, circling to Rwy 29 at night authorized with MAJCOM A3 approval.

ALSF-1 

MISSED APPROACH: Climb to 600, then turn right to intercept the COF R-110 direct ZEVEX, maintain 3000 and hold.

ATIS ★ 119.175 273.5	ORLANDO APP CON 132.65 281.425	TOWER ★ 133.75 269.375	GND CON 124.35 335.8	CLNC DEL 118.4 289.4
--------------------------------	--	----------------------------------	--------------------------------	--------------------------------



CATEGORY	A	B	C	D
S-ILS 3 *	228/24		222	(300-½)
S-LOC 3 **	480/24	474 (500-½)	480/24	474 (500-1)
CIRCLING ***	480-1 472 (500-1)	500-1 492 (500-1)	500-1½ 492 (500-1½)	560-2 552 (600-2)

ILS or LOC/DME RWY 3

SE-3, 07 SEP 2023 to 05 OCT 2023

SE-3, 07 SEP 2023 to 05 OCT 2023