

COCOA BEACH, FLORIDA

RNAV (GPS) RWY 21

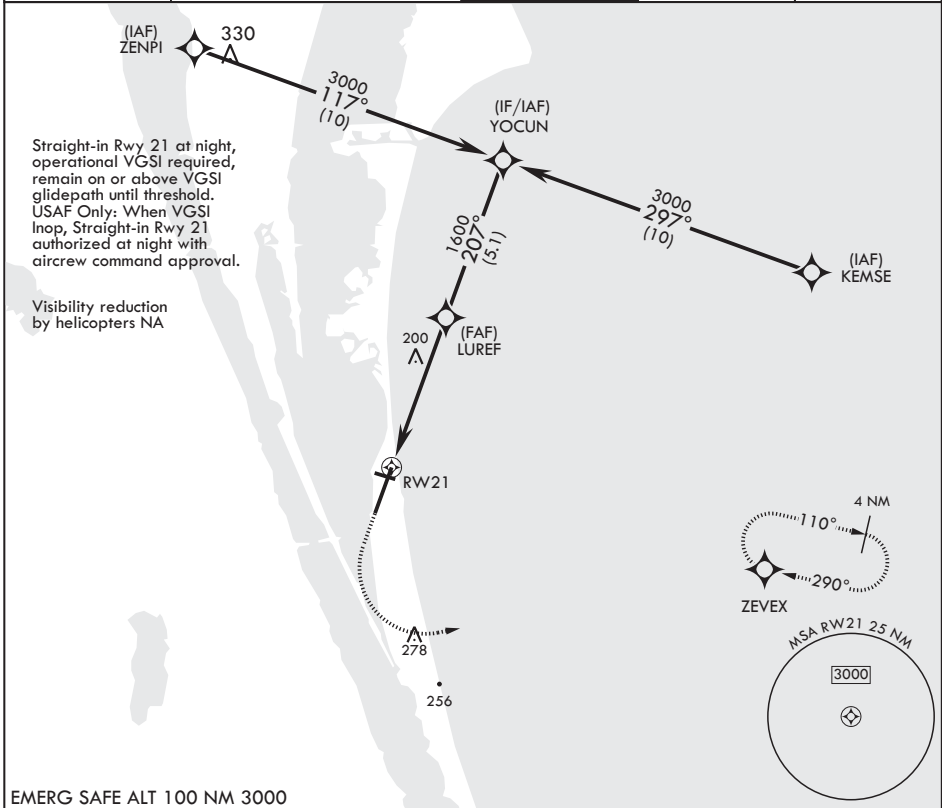
APCH CRS	Rwy Idg	9003
207°	TDZE	8
	Arprt Elev	8

AL-38 (USSF)

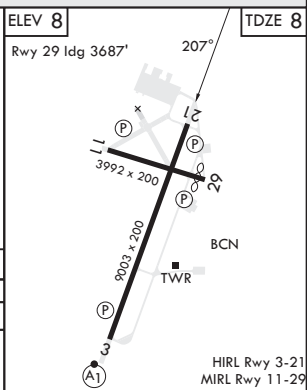
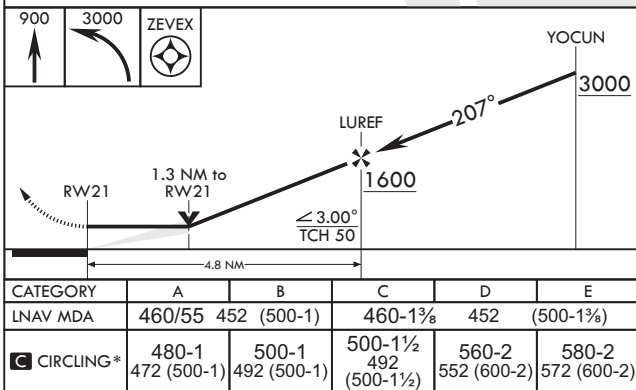
PATRICK SFB (KCOF)

RNP APCH	MISSED APPROACH: Climb to 900 then climbing left turn to 3000 direct ZEVEX and hold.
* Circling NA NW of RWY 3-21.	

ATIS	ORLANDO APP CON/DEP CON	TOWER	GND CON	CLNC DEL
119.175 273.5	132.65 281.425	133.75 269.375	124.35 335.8	118.4 289.4



EMERG SAFE ALT 100 NM 3000



COCOA BEACH, FLORIDA

28°14'N - 80°37'W

PATRICK SFB (KCOF)

Orig 03NOV22
TERPS

RNAV (GPS) RWY 21

SE-3, 07 SEP 2023 to 05 OCT 2023

SE-3, 07 SEP 2023 to 05 OCT 2023