

RIVER FOUR DEPARTURE

AL-38 [USSF]

PATRICK SFB (KCOF)


COCOA BEACH, FLORIDA

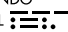
ATIS ★ 119.175 273.5
 CLNC DEL
 118.4 289.4
 GND CON
 124.35 335.8
 TOWER ★
 133.75 269.375
 ORLANDO DEP CON
 132.65 281.425


Rwy	Knots	60	120	180	240	300	360
03/21	V/V(fpm)	210	420	630	840	1050	1260

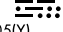
Minimum Climb Rate to 500

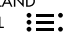
TOP ALTITUDE
2000

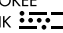
ORMOND BEACH
 112.6 OMN 
 Chan 73
 L-21-23-24, H-5

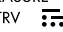
ORLANDO
 112.2 ORL 
 Chan 59
 L-21-23-24, H-5

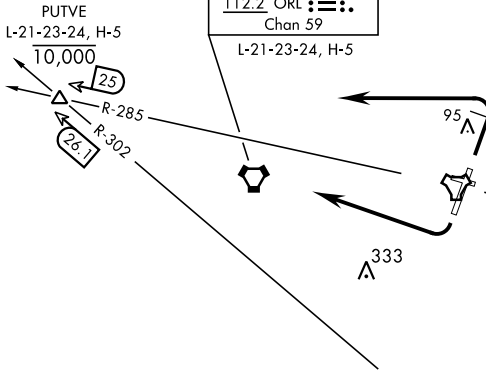
PATRICK
 Chan 97 COF 
 L-24
 (DME available on 115.0)

MELBOURNE
 115.85 MLB 
 Chan 105(Y)
 L-23-24

LAKELAND
 116.0 LAL 
 Chan 107
 L-21-24, H-5

PAHOKEE
 115.4 PHK 
 Chan 101
 L-23, H-5

TREASURE
 117.3 TRV 
 Chan 120
 L-24, H-5



DME REQUIRED

NOTE: Chart not to scale.

DEPARTURE ROUTE DESCRIPTION

Expect clearance to filed altitude/flight level 10 minutes after departure.

TAKEOFF RWY 03: Track runway heading, climb and maintain 2000. At COF TACAN 2.5 DME turn left direct PUTVE (COF R-285/25 DME). After receiving climb clearance from ATC, cross PUTVE at or below 10,000. Note: All aircraft shall not commence turn prior to 2.5 DME due to noise abatement.

TAKEOFF RWY 21: Track runway heading, climb and maintain 2000. After departure end of runway, turn right direct PUTVE (COF R-285/25 DME). After receiving climb clearance from ATC, cross PUTVE at or below 10,000.

RIVER FOUR DEPARTURE

Amdt 1 28FEB19

COCOA BEACH, FLORIDA

PATRICK SFB (KCOF)

SE-3, 07 SEP 2023 to 05 OCT 2023

SE-3, 07 SEP 2023 to 05 OCT 2023