

TACAN RWY 21

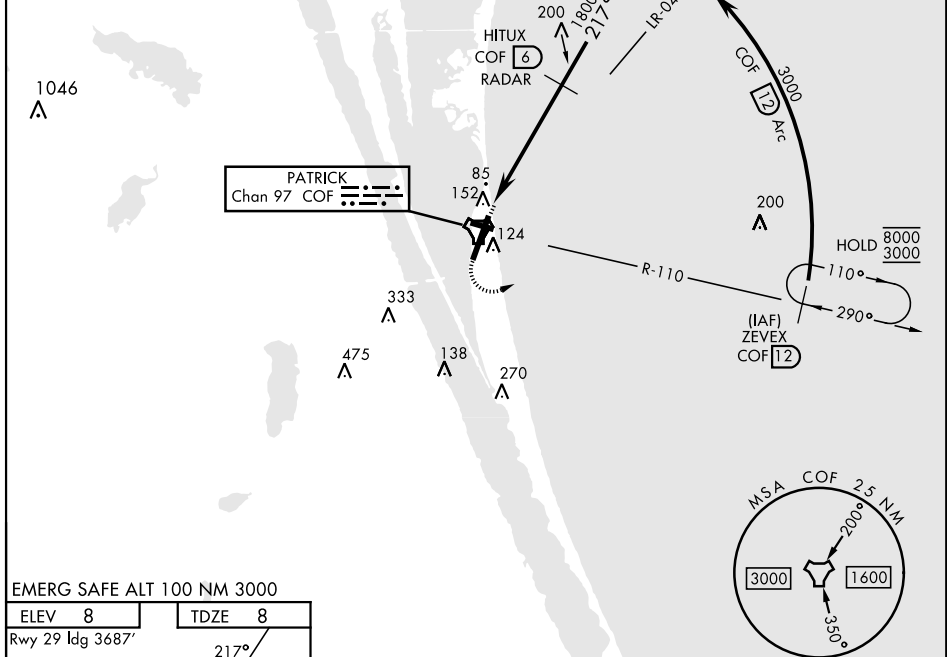
TACAN COF Chan 97	APCH CRS 217°	Rwy Idg TDZE Arprt Elev 9003 8 8	AL-38 [USSF]	PATRICK SFB (KCOF)
-----------------------------	-------------------------	--	--------------	--------------------

▼ * When Rwy 29 VGSI inop, circling to Rwy 29 NA at night. Circling not authorized W of Rwy 3-21.
 † MISSED APPROACH: Climb to 900, then climbing left turn to 3000, intercept the COF R-110 outbound to ZEVEX and hold, continue climb in hold to 3000.

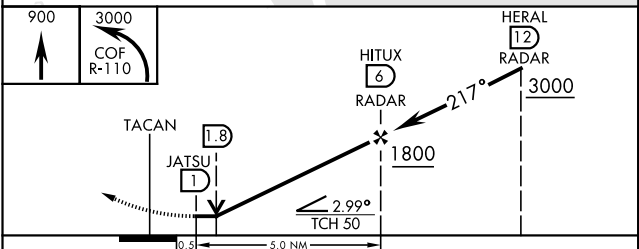
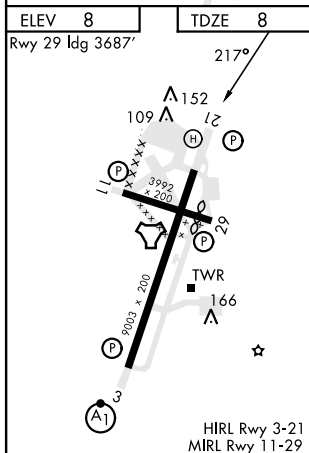
ATIS * 119.175 273.5	ORLANDO APP CON 132.65 281.425	TOWER * 133.75 269.375	GND CON 124.35 335.8	CLNC DEL 118.4 289.4
--------------------------------	--	----------------------------------	--------------------------------	--------------------------------

** When VGSI inop, procedure NA at night. USAF only: When VGSI inop, straight-in Rwy 21 authorized at night with MAJCOM A3 approval.
 † Missed approach requires use of RNAV or ATC RADAR monitoring.

CAUTION: Road 12' AGL/28' MSL, 756' from threshold, 952' left of course.



EMERG SAFE ALT 100 NM 3000



CATEGORY	A	B	C	D	E
S-21*	460/55	452 (500-1)	460-1 $\frac{3}{8}$	452 (500-1 $\frac{3}{8}$)	
CIRCLING**	480-1	500-1	500-1 $\frac{1}{2}$	560-2	580-2
	472 (500-1)	492 (500-1)	492 (500-1 $\frac{1}{2}$)	552 (600-2)	572 (600-2)

TACAN RWY 21