

# HI-ILS Z or LOC Z RWY 15

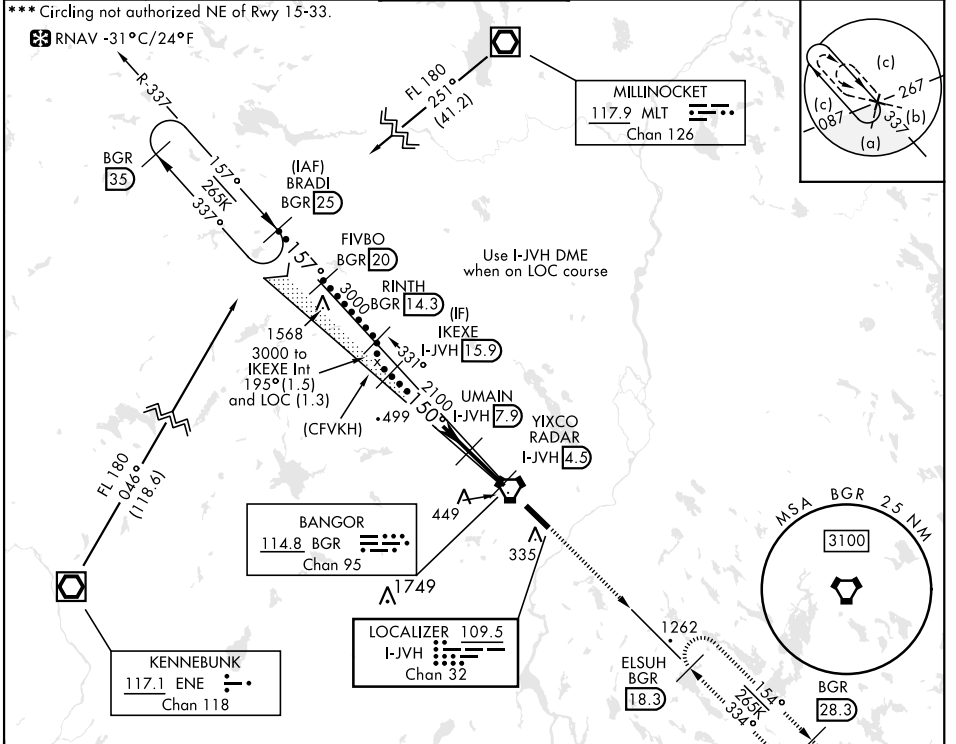
LOC/DME I-JVH <b>109.5</b> Chan <b>32</b>	APCH CRS <b>150°</b>	Rwy ldg <b>11,440</b> TDZE <b>192</b> Arpt Elev <b>192</b>
---	-------------------------	---

AL-39 [USAF]

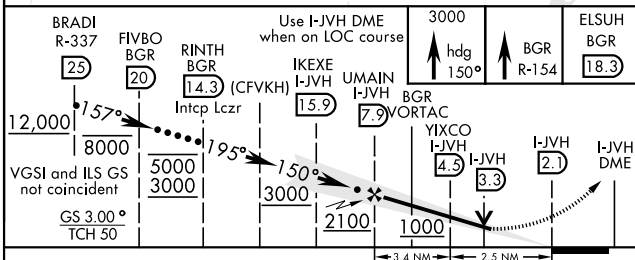
BANGOR INTL (KBGR)

DME required.	ALSF-2	MISSED APPROACH: Climb to 3000 via heading 150° and BGR VORTAC R-154 to ELSUH (R-154/18.3 DME) and hold.
---------------	--------	--

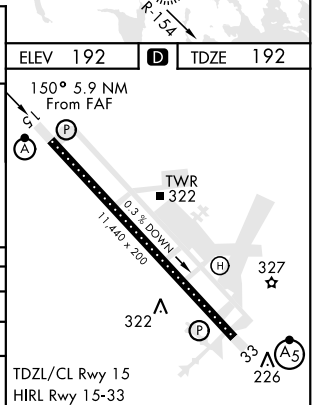
ATIS <b>127.75</b>	APP CON <b>118.925 239.3</b>	TOWER <b>120.7 233.7</b>	GND CON <b>121.9 348.6</b>	ASR
-----------------------	---------------------------------	-----------------------------	-------------------------------	-----



EMERG SAFE ALT 100 NM 7500



CATEGORY	C	D	E
S-ILS 15*	392/18	200 (200-½)	
S-LOC 15**	660/50	468 (500-1)	
CIRCLING***	740-1½ 548 (600-1½)	820-2 628 (700-2)	880-2½ 688 (700-2½)



# HI-ILS Z or LOC Z RWY 15

NE-1, 07 SEP 2023 to 05 OCT 2023

NE-1, 07 SEP 2023 to 05 OCT 2023