

BANGOR, MAINE

HI-VOR/DME or TACAN RWY 15

VORTAC BGR 114.8 Chan 95	APCH CRS 157°	Rwy Idg 11,440 TDZE 192 Arprt Elev 192
--	-------------------------	--

AL-39 [USAF]

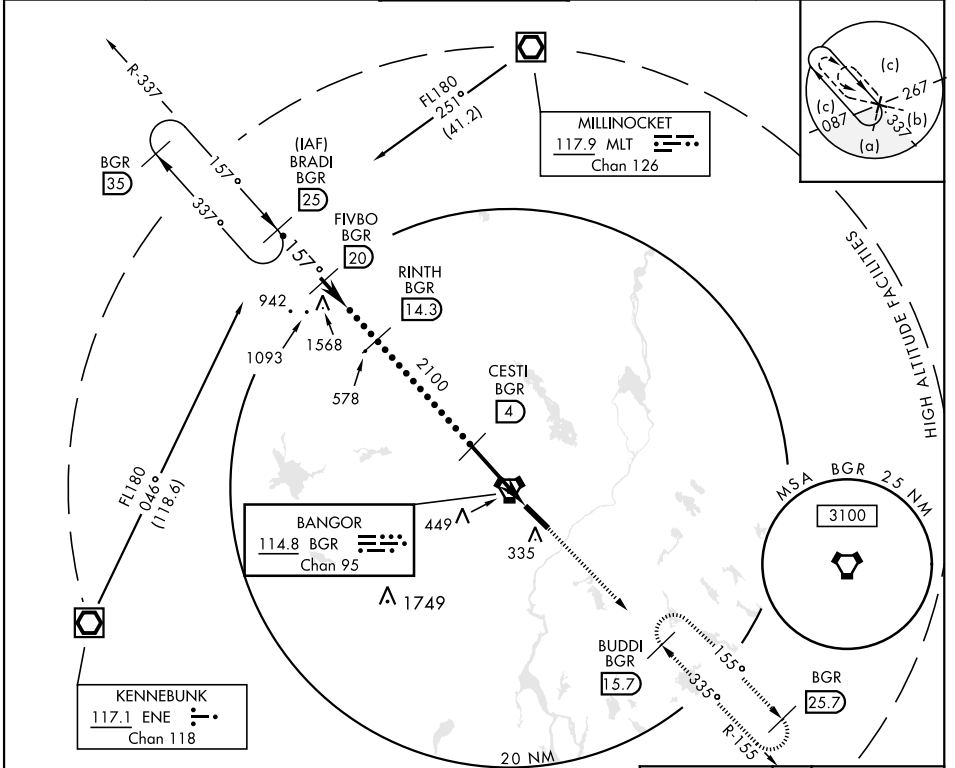
BANGOR INTL (KBGR)

▼ * When ALS inop, increase CAT E vis to 1 1/2 miles.
 ** Circling not authorized NE of Rwy 15-33.



MISSED APPROACH: Climb to 3000 via BGR VORTAC R-155 to BUDDI (R-155/15.7 DME) and hold.

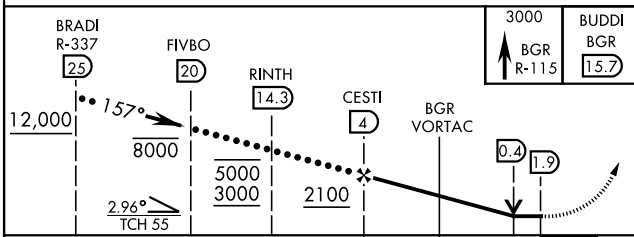
ATIS 127.75	APP CON 118.925 239.3	TOWER 120.7 233.7	GND CON 121.9 348.6	ASR
-----------------------	---------------------------------	-----------------------------	-------------------------------	-----



NE-1, 07 SEP 2023 to 05 OCT 2023

NE-1, 07 SEP 2023 to 05 OCT 2023

EMERG SAFE ALT 100 NM 7500



ELEV 192	TDZE 192
157° 1.9 NM from VORTAC	
TDZL/CL Rwy 15 HIRL Rwy 15-33	
FAF to MAP 5.9 NM	
Knots	120 140 160 180 200
Min:Sec	2:57 2:32 2:13 1:58 1:46

BANGOR, MAINE

44°48'N-68°50'W

BANGOR INTL (KBGR)

Amdt 3 14261

HI-VOR/DME or TACAN RWY 15