

BANGOR, MAINE

HI-VOR/DME or TACAN RWY 33

VORTAC BGR 114.8 Chan 95	APCH CRS 335°	Rwy Idg 11,440 TDZE 163 Arprt Elev 192
--	-------------------------	---

AL-39 [USAF]

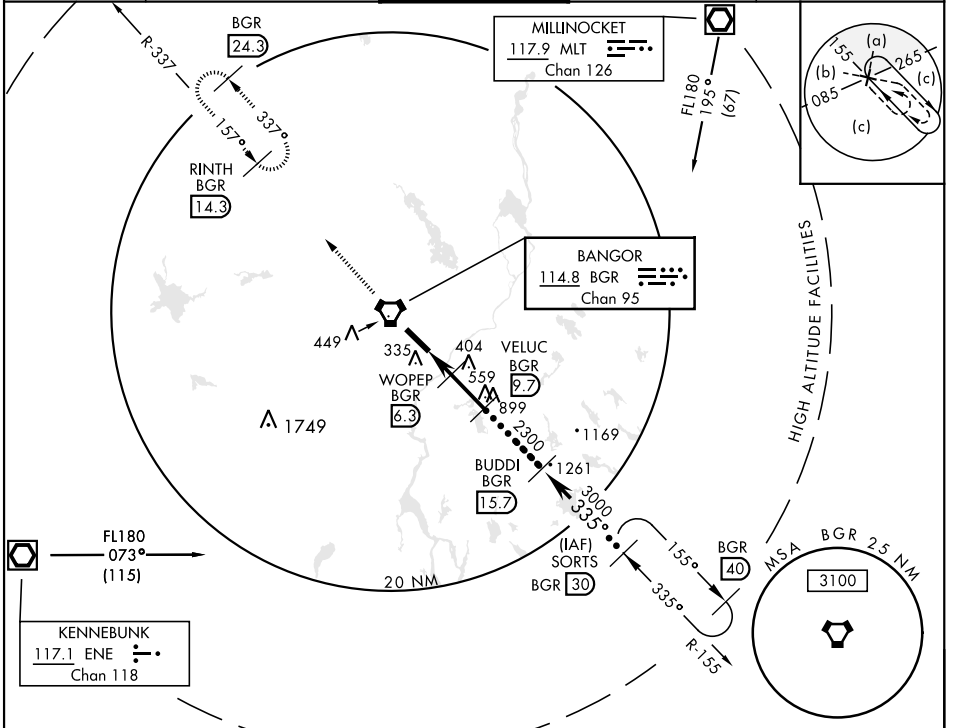
BANGOR INTL (KBGR)

▼ * When ALS inop, increase CAT C RVR to 60 and vis to 1¼ miles, CAT D/E vis to 1½ miles.
** Circling not authorized NE of Rwy 15-33.



MISSED APPROACH: Climb to 3000 direct BGR VORTAC then via BGR R-337 to RINTH (BGR 14.3 DME) and hold.

ATIS 127.75	APP CON 118.925 239.3	TOWER 120.7 233.7	GND CON 121.9 348.6	ASR
-----------------------	---------------------------------	-----------------------------	-------------------------------	-----

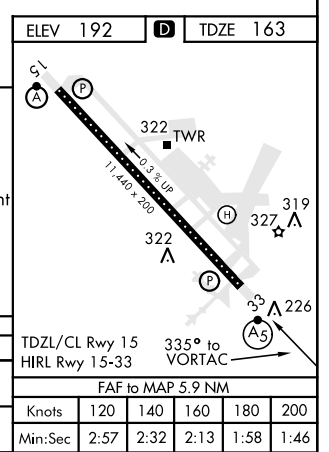


EMERG SAFE ALT 100 NM 7500

3000	BGR	BGR	R-337
VORTAC	5	3.8	1100
WOEPEP	6.3	2300	3000
VELUC	2.7	3000	12,000
BUDDI	15.7	3000	12,000
SORTS	30	12,000	12,000

VGSI and Descent angles not coincident.
3.32° TCH 57

CATEGORY	C	D	E
S-33 *	600/40 437 (500-¾)	600/50	437 (500-1)
CIRCLING **	660-1½ 468 (500-1½)	760-2	568 (600-2)



BANGOR, MAINE

44°48'N-68°50'W

BANGOR INTL (KBGR)

Amdt 4

HI-VOR/DME or TACAN RWY 33

NE-1, 07 SEP 2023 to 05 OCT 2023

NE-1, 07 SEP 2023 to 05 OCT 2023