

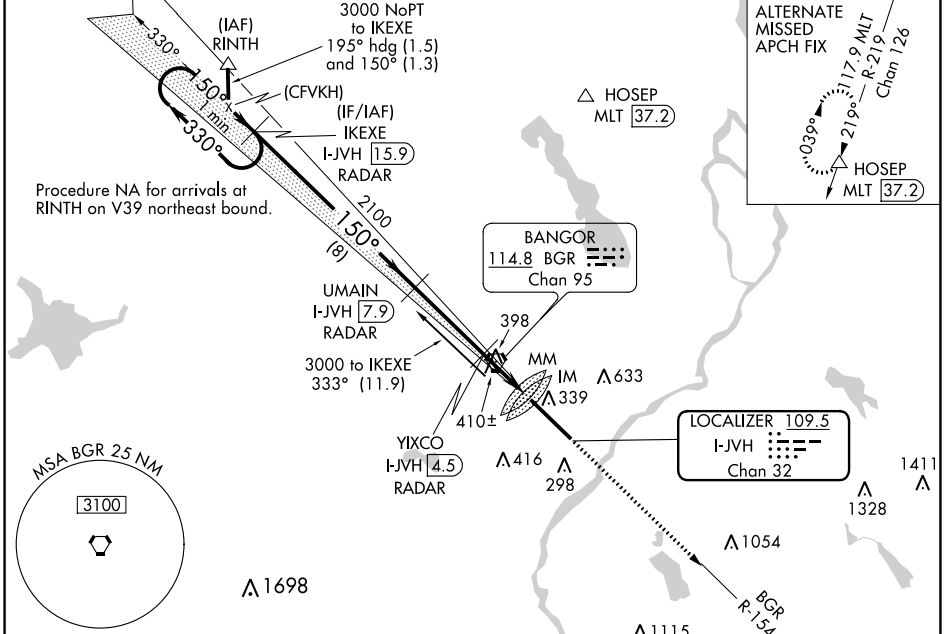
LOC/DME I-JVH 109.5 Chan 32	APP CRS 150°	Rwy Idg 11440 TDZE 192 Apt Elev 192
-------------------------------------------------	------------------------	----------------------------------------------------------------

ILS Y or LOC Y RWY 15

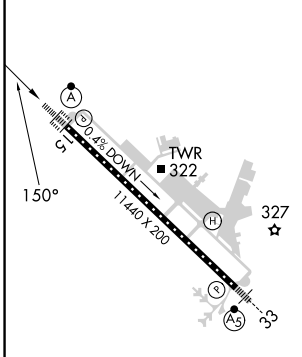
BANGOR INTL (BGR)

	Circling NA NE of Rwy 15-33. DME or RADAR required. For inoperative ALS, increase S-ILS 15 Cat E visibility to RVR 4000, and S-LOC 15 Cat C/D/E visibility to 1/2 SM.	ALSF-2 	MISSED APPROACH: Climb to 3000 on heading 150° and BGR VORTAC R-154 to ELSUH/BGR 18.3 DME/RADAR and hold.

ATIS 127.75	BANGOR APP CON 118.925 239.3	BANGOR TOWER 120.7 233.7	GND CON 121.9 348.6	CLNC DEL 135.9 348.6
-----------------------	----------------------------------------	------------------------------------	-------------------------------	--------------------------------



ELEV 192	D	TDZE 192
----------	----------	----------



DME or RADAR REQUIRED

One Minute Holding Pattern	IKEXE I-JVH [15.9] RADAR	UMAIN I-JVH [7.9] RADAR	3000 hdg 150°	BGR R-154	ELSUH BGR [18.3] RADAR
3000	330°	150°	150°	2100	*1000
GS 3.00° TCH 50	VGS1 and ILS glidepath not coincident (VGS1 Angle 3.00/TCH 55).	YIXCO I-JVH [4.5] RADAR	MM I-JVH [3.3]	IM I-JVH [2.1]	*LOC only.

FAF to MAP 5.8 NM					
Knots	60	90	120	150	180
Min:Sec	5:48	3:52	2:54	2:19	1:56
CIRCLING	660/24 468 (500-1)	468 (500-1/2) 720-1 528 (600-1)	200 (200-1/2) 660/50 740-1 1/2 548 (600-1 1/2)	200 (200-1/2) 660/50 820-2 628 (700-2)	468 (500-1) 880-2 1/2 688 (700-2 1/2)

NE-1, 07 SEP 2023 to 05 OCT 2023

NE-1, 07 SEP 2023 to 05 OCT 2023