

WAAS CH 82307 W15A	APP CRS 150°	Rwy Idg 11440 TDZE 192 Apt Elev 192
---------------------------------	------------------------	--

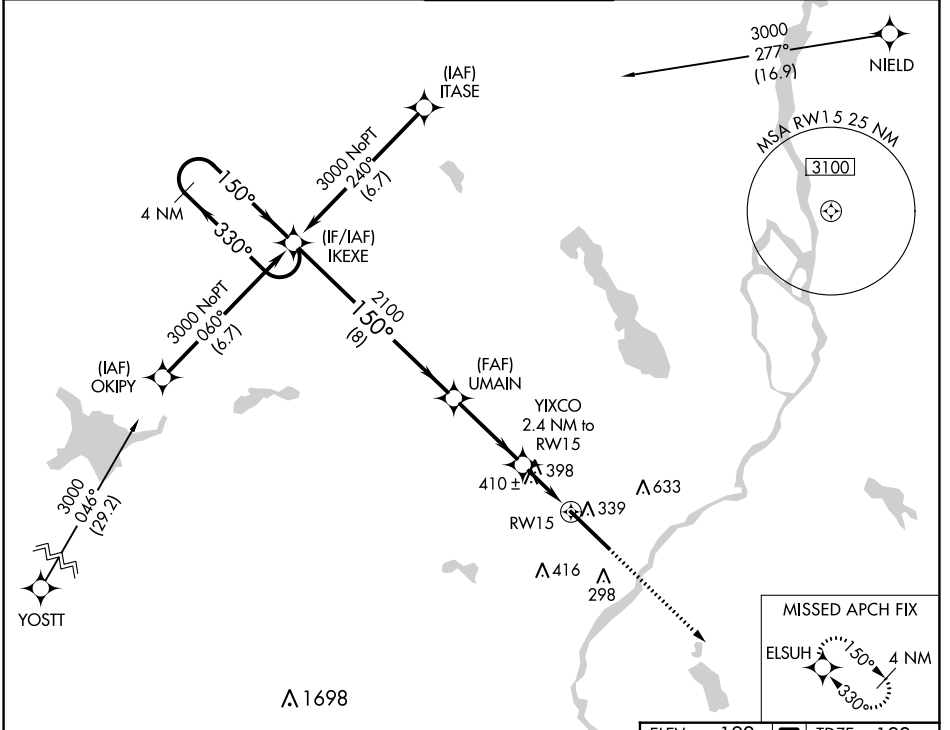
RNAV (GPS) RWY 15

BANGOR INTL (BGR)

ASR For uncompensated Baro-VNAV systems, LNAV/VNAV NA below -19°C (-2°F) or above 54°C (130°F). DME/DME RNP-0.3 NA. For inoperative ALS, increase LPV Cat E visibility to RVR 4000, LNAV/VNAV all Cats visibility to RVR 6000, and LNAV Cats C/D/E visibility to 1 3/8 SM. Circling NA NE of Rwy 15-33.

ALSf-2 MISSED APPROACH: Climb to 3000 direct ELSUH and hold.

ATIS 127.75	BANGOR APP CON 118.925 239.3	BANGOR TOWER 120.7 233.7	GND CON 121.9 348.6	CLNC DEL 135.9 348.6
-----------------------	--	------------------------------------	-------------------------------	--------------------------------



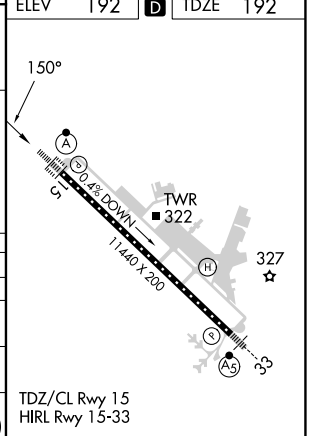
4 NM Holding Pattern

VGSI and RNAV glidepath not coincident (VGSI Angle 3.00/TCH 55).

3000 330° 150° 150° 2100 1000* 1.3 NM to RW15

GP 3.00° TCH 50

CATEGORY	A	B	C	D	E
LPV DA	392/24		200 (200-1/2)		
LNAV/VNAV DA	541/40		349 (400-3/4)		
LNAV MDA	660/24	468 (500-1/2)	660/50		468 (500-1)
C CIRCLING	660-1 468 (500-1)	720-1 528 (600-1)	740-1 1/2 548 (600-1 1/2)	820-2 628 (700-2)	880-2 1/2 688 (700-2 1/2)



NE-1, 07 SEP 2023 to 05 OCT 2023

NE-1, 07 SEP 2023 to 05 OCT 2023