

# GATEWAY ONE DEPARTURE

AL-46 (FAA)

SCOTT AFB/MIDAMERICA ST LOUIS (B.L.V)  
BELLEVILLE, ILLINOIS

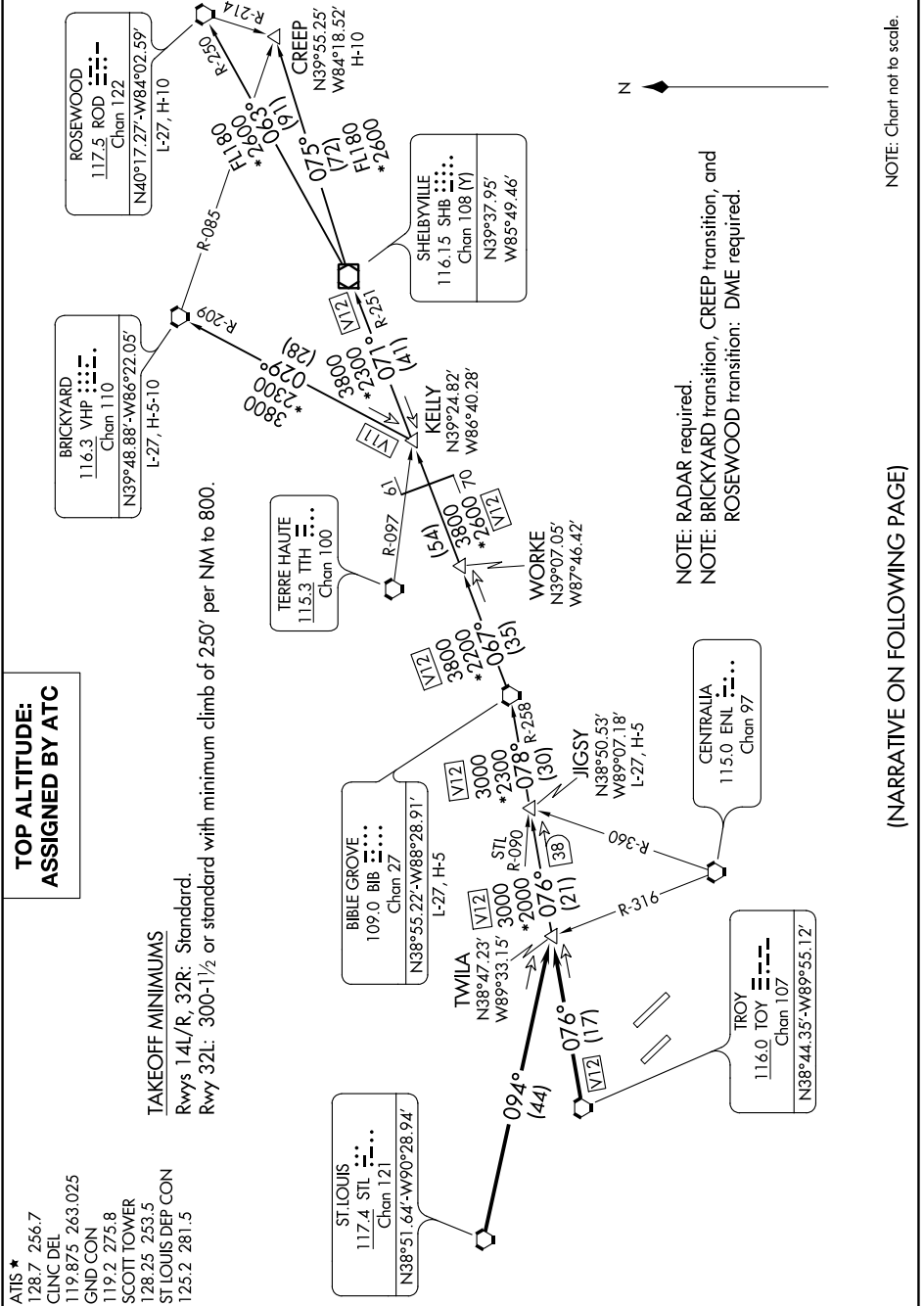
EC-3, 07 SEP 2023 to 05 OCT 2023

**TOP ALTITUDE:  
ASSIGNED BY ATC**

ATIS \*  
 128.7 256.7  
 CINC DEL  
 119.875 263.025  
 GND CON  
 119.2 275.8  
 SCOTT TOWER  
 128.25 253.5  
 ST LOUIS DEP CON  
 125.2 281.5

**TAKEOFF MINIMUMS**

Rwys 14L/R, 32R: Standard.  
 Rwy 32L: 300-1/2 or standard with minimum climb of 250' per NM to 800.



NOTE: RADAR required.  
 NOTE: BRICKYARD transition, CREEP transition, and ROSEWOOD transition: DME required.

NOTE: Chart not to scale.

(NARRATIVE ON FOLLOWING PAGE)

EC-3, 07 SEP 2023 to 05 OCT 2023