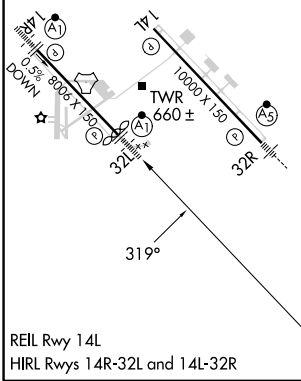
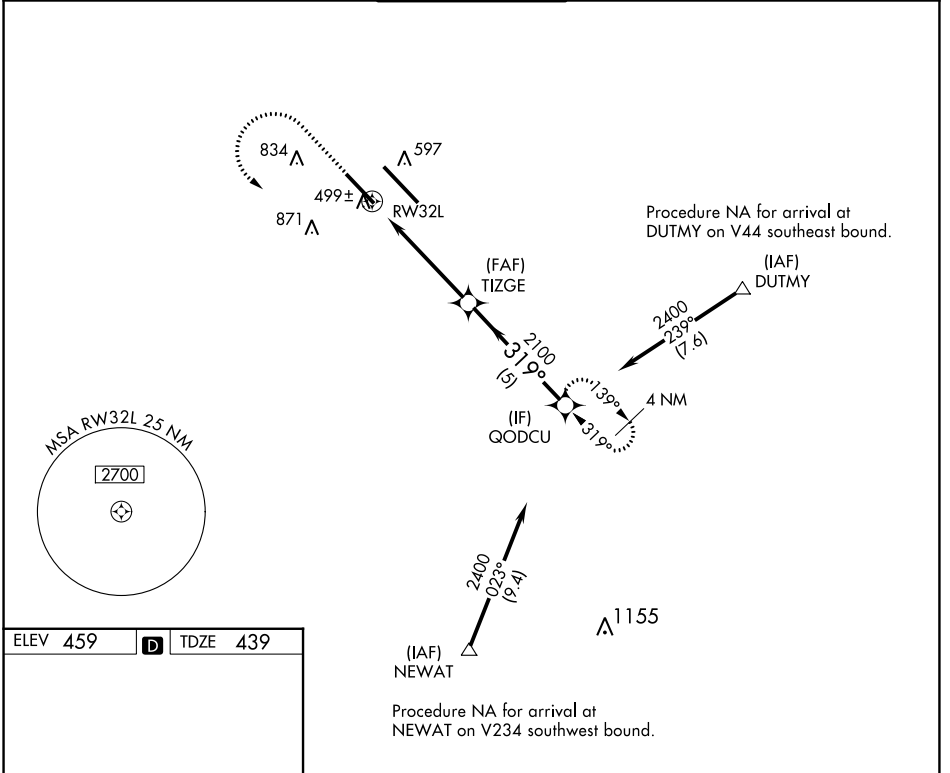


APP CRS 319°	Rwy Idg 7822
	TDZE 439
	Apt Elev 459

RNAV (GPS) RWY 32L

SCOTT AFB/MIDAMERICA ST LOUIS (BLV)

RNP APCH-GPS.		ALSIF-1	MISSED APPROACH: Climb to 1500 then climbing left turn to 2400 direct QODCU and hold.	
<p>For inop ALS, increase LNAV Cat C/D visibility to 1 1/2 mile.</p>				
ATIS ★ 128.7 256.7	ST LOUIS APP CON 125.2 281.5	SCOTT TOWER 128.25 253.5	GND CON 119.2 275.8	CLNC DEL 119.875 263.025



ELEV 459	D	TDZE 439		
<p>Procedure NA for arrival at NEWAT on V234 southwest bound.</p>				
1500	2400	QODCU	VGSI and descent angles not coincident (VGSI Angle 3.00/TCH 50).	
<p>1.4 NM to RW32L</p> <p>1.4 NM 3.7 NM 5 NM</p>				
CATEGORY	A	B	C	D
LNAV MDA	920/24	481 (500-1/2)	920/50	481 (500-1)
C CIRCLING	1000-1 541 (600-1)	1120-1 661 (700-1)	1240-2 1/4 781 (800-2 1/4)	1240-2 1/2 781 (800-2 1/2)

EC-3, 07 SEP 2023 to 05 OCT 2023

EC-3, 07 SEP 2023 to 05 OCT 2023