




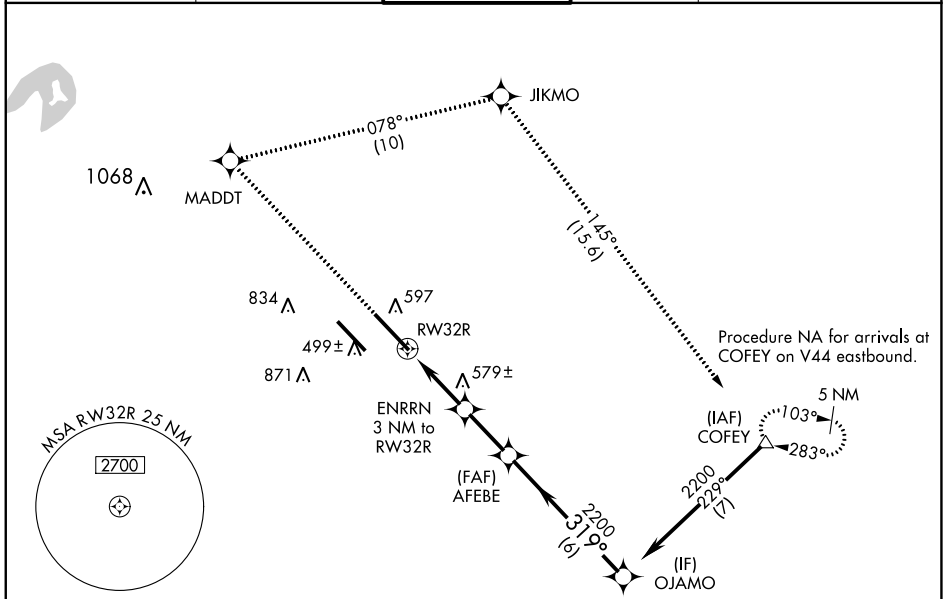
WAAS CH 50518 W32A	APP CRS 319°	Rwy Idg TDZE Apt Elev	10000 442 459
--	------------------------	-----------------------------	--




RNAV (GPS) RWY 32R

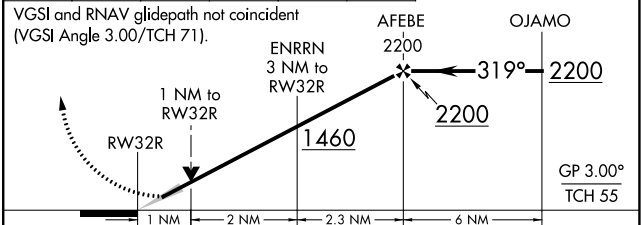
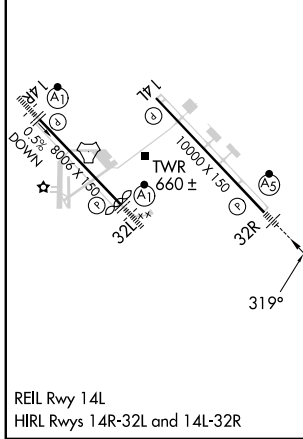
SCOTT AFB/MIDAMERICA ST LOUIS (BLV)

RNP APCH - GPS.		MALSR	MISSED APPROACH: Climb to 2300 direct MADDT and right turn on track 078° to JIKMO and on track 145° to COFEY and hold.
 For uncompensated Baro-VNAV systems, procedure NA below -18°C or above 54°C.  For inop ALS, increase LNAV/VNAV all Cats visibility to RVR 5500.			

ATIS ★ 128.7 256.7	ST LOUIS APP CON 125.2 281.5	SCOTT TOWER 128.25 253.5	GND CON 119.2 275.8	CLNC DEL 119.875 263.025
------------------------------	--	------------------------------------	-------------------------------	------------------------------------



ELEV 459	D	TDZE 442	2300	MADDT	JIKMO	COFEY		
			↑		tr 078°		tr 145°	



CATEGORY	A	B	C	D
LPV DA	642/24		200 (200-½)	
LNAV/VNAV DA	804/35		362 (400-⅝)	
LNAV MDA	840/24		840/35 398 (400-⅝)	
C CIRCLING	1000-1 541 (600-1)	1120-1 661 (700-1)	1240-2¼ 781 (800-2¼)	1240-2½ 781 (800-2½)

EC-3, 07 SEP 2023 to 05 OCT 2023

EC-3, 07 SEP 2023 to 05 OCT 2023