

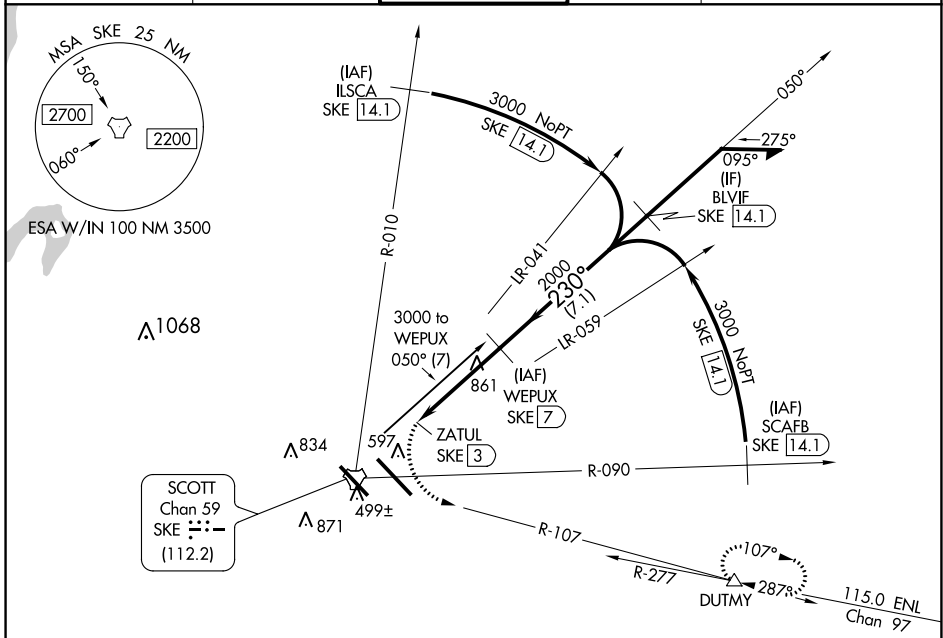
TACAN SKE Chan <b>59</b> (112.2)	APP CRS <b>230°</b>	Rwy ldg TDZE Apt Elev <b>N/A</b> <b>N/A</b> <b>459</b>
--	------------------------	--

# TACAN-A

SCOTT AFB/MIDAMERICA ST LOUIS (BLV)

<b>⚠</b> RADAR required. When local altimeter setting not received, use St Louis Downtown altimeter setting; increase all MDA 60 feet; increase Circling Cat C/D/E visibility ¼ mile.	MISSED APPROACH: Climbing left turn to 3000 on heading 130° and SKE TACAN R-107 to DUTMY/SKE 14.1 DME and hold.
---	---

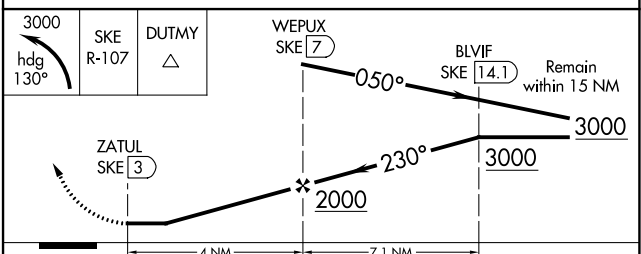
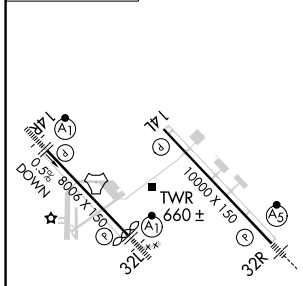
ATIS ★ <b>128.7 256.7</b>	ST LOUIS APP CON <b>125.2 281.5</b>	SCOTT TOWER <b>128.25 253.5</b>	GND CON <b>119.2 275.8</b>	CLNC DEL <b>119.875 263.025</b>
------------------------------	--	------------------------------------	-------------------------------	------------------------------------



EC-3, 07 SEP 2023 to 05 OCT 2023

EC-3, 07 SEP 2023 to 05 OCT 2023

ELEV 459	<b>D</b>
----------	----------



CATEGORY	A	B	C	D	E
<b>C</b> CIRCLING	1180-2¼	721 (800-2¼)	1240-2¼ 781 (800-2¼)	1240-2½ 781 (800-2½)	1240-2¾ 781 (800-2¾)

# TACAN-A