

BILOXI, MISSISSIPPI

# RNAV (GPS) RWY 22

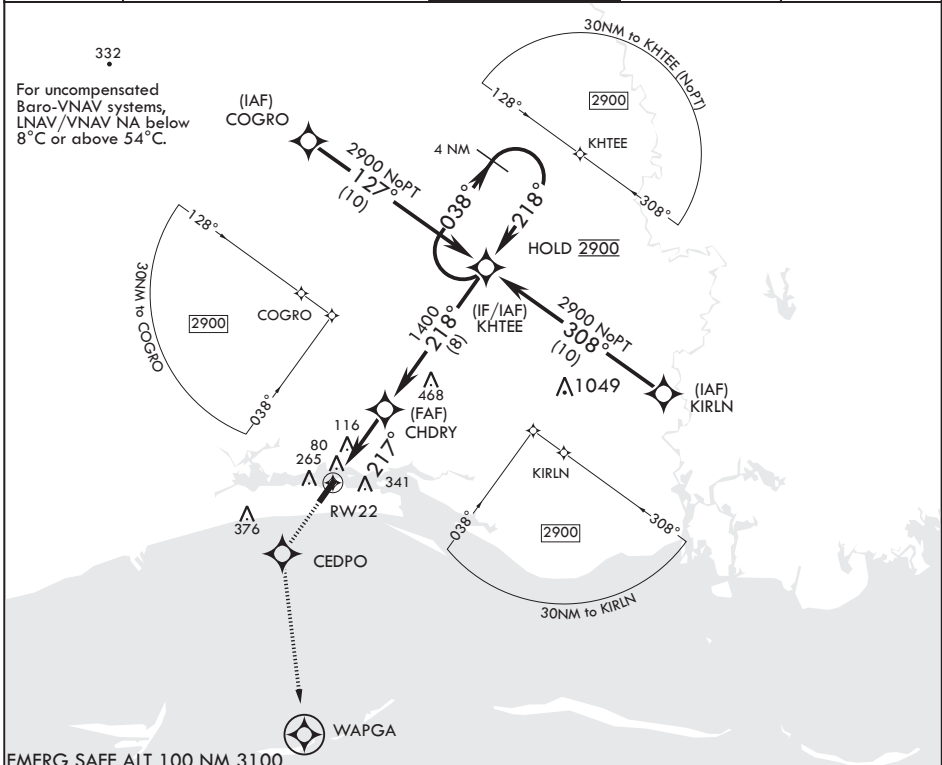
APCH CRS	Rwy Idg	<b>6630</b>
<b>217°</b>	THRE	<b>17</b>
	Arprt Elev	<b>33</b>

AL-49 (USAF)

KEESLER AFB (KBIX)

RNP APCH	ALSF-1	MISSED APPROACH: Climb to 2200 direct CEDPO and track 175° to WAPGA. Expect ATC instructions.
<p>▼ * When ALS inop, increase vis to 1 3/8 miles.          ** When ALS inop, increase CAT AB RVR to 55, vis to 1 mile; CAT CD vis to 1 3/8 miles.</p>		

ATIS <b>281.55</b>	GULFPORT APP CON/DEP CON <b>124.6 354.1 130° - 309° 127.5 254.25 310° - 129°</b>	TOWER* <b>120.75 269.075</b>	GND CON <b>121.8 275.8</b>	CLNC DEL <b>121.8 275.8</b>
-----------------------	---	---------------------------------	-------------------------------	--------------------------------



   tr 175°	ELEV 33 Rwy 4 Idg 6030' Rwy 22 Idg 6630' THRE 17 217°				
 4 NM Holding Pattern 038° → 2900 ← 218° GP 3.04° TCH 53	 74 45 74 150 7430 x 150 0.3% UP TWIR 195 195 195				
RW22 1.4 NM to RW22 217° 1400 4.1 NM					
CATEGORY	A	B	C	D	
LNAV/VNAV DA*	520-1¼		503	(500-1¼)	
LNAV MDA**	520-40	503 (500-¾)	520-1¼	503 (500-1¼)	
CIRCLING	580-1	660-1	680-1¼	680-2	
	547 (600-1)	627 (700-1)	647 (700-1¼)	647 (700-2)	
HIRL all Rwys REIL Rwy 4 Rwy 22 2000' non-std apch lgt system					

BILOXI, MISSISSIPPI

30°25'N - 88°55'W

KEESLER AFB (KBIX)

Amdt 2 21APR22

# RNAV (GPS) RWY 22

SC-4, 07 SEP 2023 to 05 OCT 2023

SC-4, 07 SEP 2023 to 05 OCT 2023