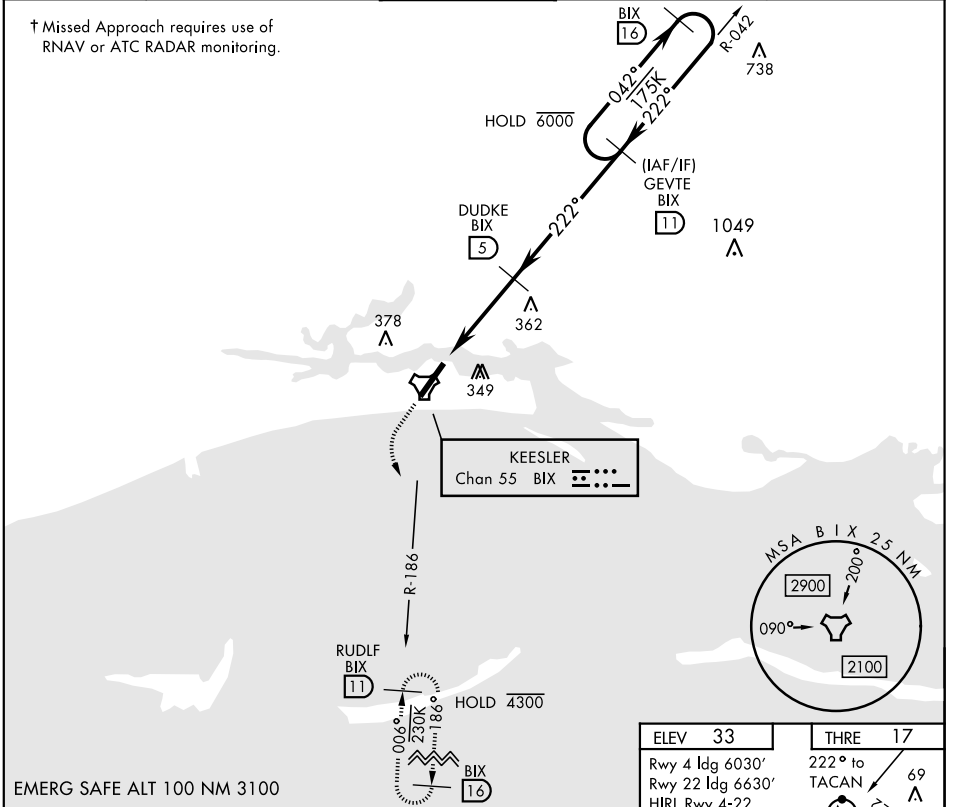


# TACAN RWY 22

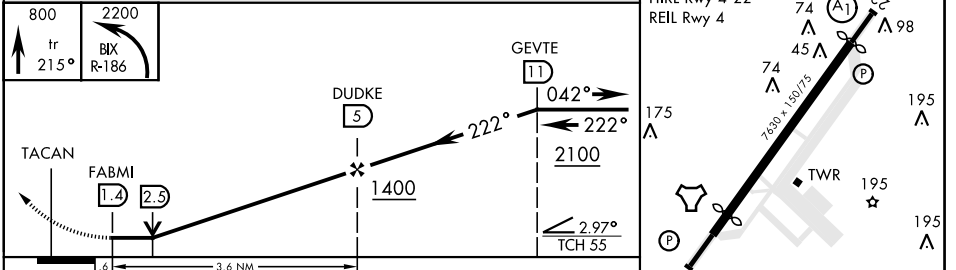
TACAN BIX Chan <b>55</b>	APCH CRS <b>222°</b>	Rwy ldg THRE <b>17</b> Arprt Elev <b>33</b>	AL-49 [USAF]	KEESLER AFB (KBIX)
-----------------------------	-------------------------	---	--------------	--------------------

▽ \* When ALS inop, increase CAT AB RVR to 55, vis to 1 mile; CAT CD vis to 1¼ miles.

ATIS <b>281.55</b>	GULFPORT APP CON <b>124.6 354.1</b> (130°- 309°) <b>127.5 254.25</b> (310°- 129°)	KEESLER TOWER * <b>120.75 269.075</b>	GND CON <b>121.8 275.8</b>	CLNC DEL <b>121.8 275.8</b>
-----------------------	---	--	-------------------------------	--------------------------------



EMERG SAFE ALT 100 NM 3100



	ELEV 33	THRE 17		
	Rwy 4 ldg 6030'	222° to TACAN	69	△
	Rwy 22 ldg 6630'			
	HIRL Rwy 4-22			
	REIL Rwy 4			
CATEGORY	A	B	C	D
S-22*	620/40	603 (600-¾)	620-1½	603 (600-1½)
CIRCLING	620-1	660-1	680-1¾	680-2
	587 (600-1)	627 (700-1)	647 (700-1¾)	647 (700-2)

# TACAN RWY 22

SC-4, 07 SEP 2023 to 05 OCT 2023

SC-4, 07 SEP 2023 to 05 OCT 2023