

# TACAN-A

BILOXI, MISSISSIPPI

TACAN BIX  
Chan 55

APCH CRS  
303°

Rwy ldg  
THRE  
Arprt Elev  
N/A  
N/A  
33

AL-49 [USAF]

KEESLER AFB (KBIX)

† MISSED APPROACH: Climb tracking 303° to BIX TACAN then right turn to intercept BIX R-063 climbing to 2100 to 10 DME (WELOS) and hold.

ATIS  
281.55

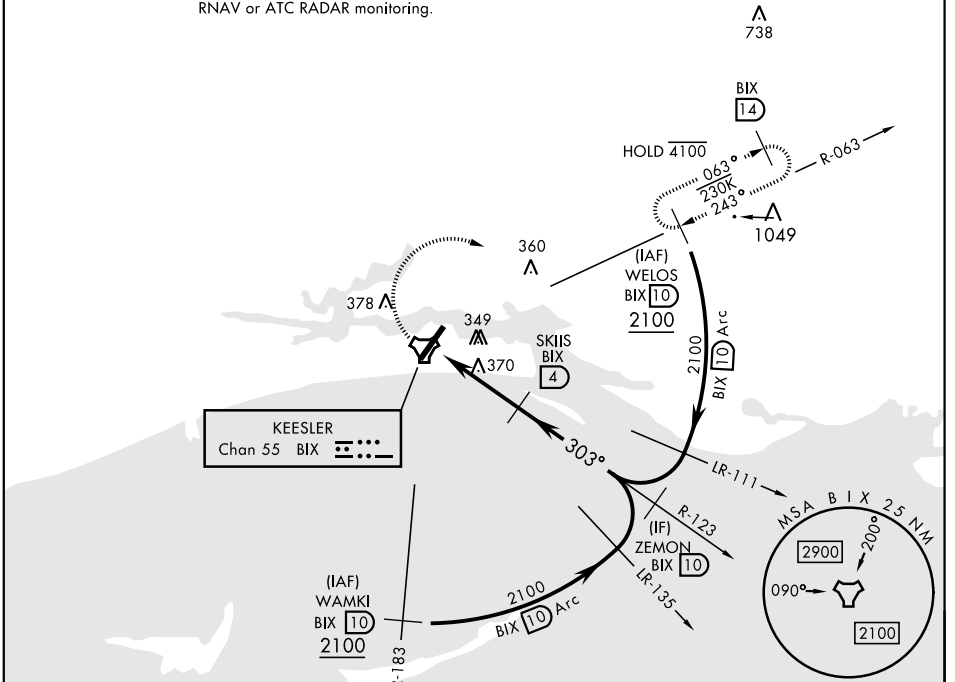
GULFPORT APP CON  
124.6 354.1 (130°- 309°)  
127.5 254.25 (310°- 129°)

KEESLER TOWER ★  
120.75 269.075

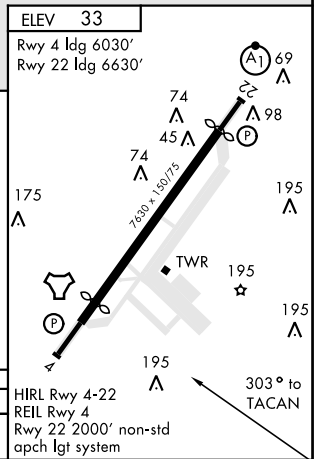
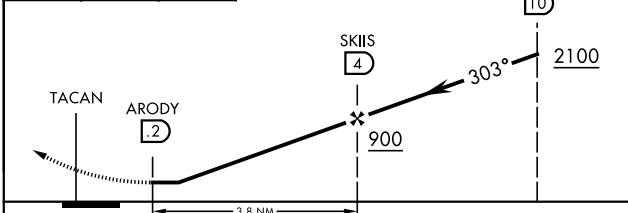
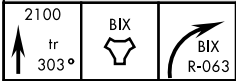
GND CON  
121.8 275.8

CLNC DEL  
121.8 275.8

† Missed approach requires use of RNAV or ATC RADAR monitoring.



EMERG SAFE ALT 100 NM 3100



CATEGORY	A	B	C	D
	620-1	660-1	680-1 3/4	680-2
CIRCLING	587 (600-1)	627 (700-1)	647 (700-1 3/4)	647 (700-2)

BILOXI, MISSISSIPPI

30°25'N-88°55'W

KEESLER AFB (KBIX)

Amdt 3 25MAR21

# TACAN-A

SC-4, 07 SEP 2023 to 05 OCT 2023

SC-4, 07 SEP 2023 to 05 OCT 2023