

BLYTHE, CALIFORNIA

AL-53 (FAA)

19115

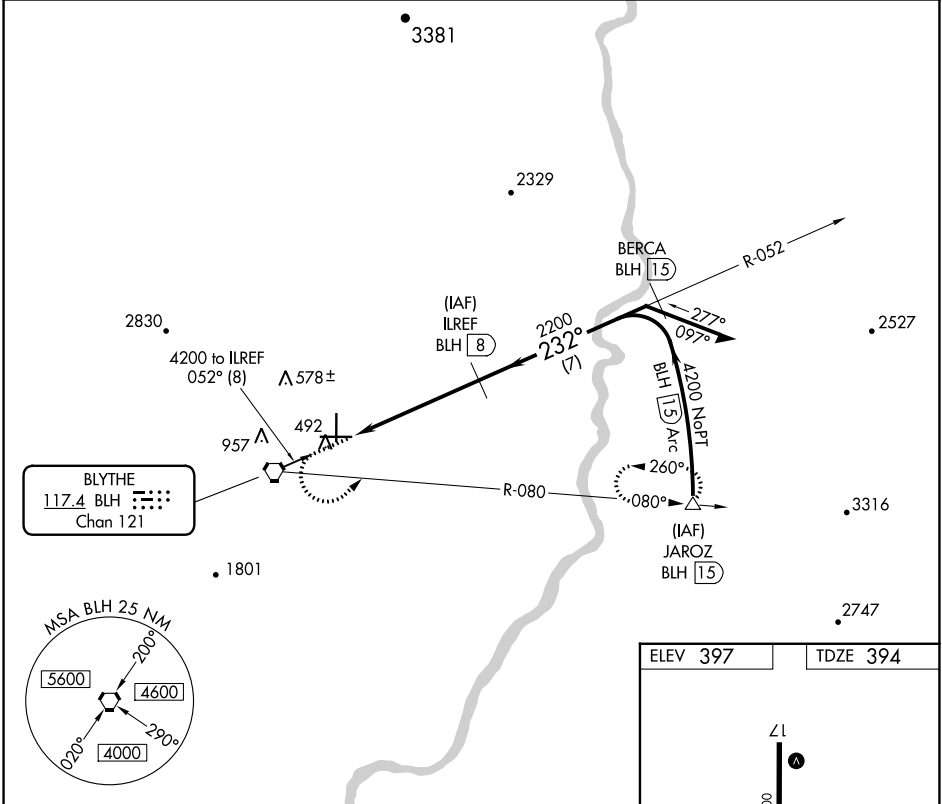
VORTAC BLH <b>117.4</b> Chan <b>121</b>	APP CRS <b>232°</b>	Rwy Idg TDZE <b>394</b> Apt Elev <b>397</b>
---	------------------------	---

# VOR/DME RWY 26

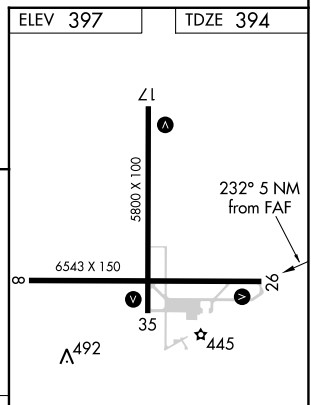
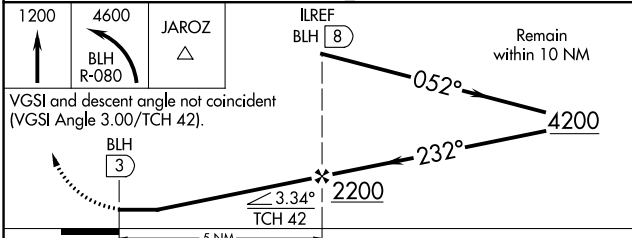
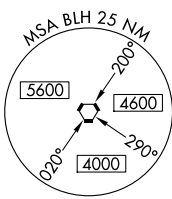
BLYTHE (BLH)

MISSED APPROACH: Climb to 1200 then climbing left turn to 4600 via BLH VORTAC R-080 to JAROZ/1.5 DME and hold.

ASOS <b>120.175</b>	LOS ANGELES CENTER <b>128.15 285.6</b>	UNICOM <b>122.8 (CTAF)</b>
------------------------	---	-------------------------------



**BLYTHE**  
117.4 BLH  
Chan 121



CATEGORY	A	B	C	D
S-26	760-1 366 (400-1)			760-1¼ 366 (400-1¼)
CIRCLING	840-1 443 (500-1)	860-1 463 (500-1)	960-1½ 563 (600-1½)	1260-2¾ 863 (900-2¾)

MIRL Rwy 8-26 and 17-35

BLYTHE, CALIFORNIA  
Amdt 6 15MAY03

33°37'N-114°43'W

# VOR/DME RWY 26

BLYTHE (BLH)

SW-3, 07 SEP 2023 to 05 OCT 2023

SW-3, 07 SEP 2023 to 05 OCT 2023