

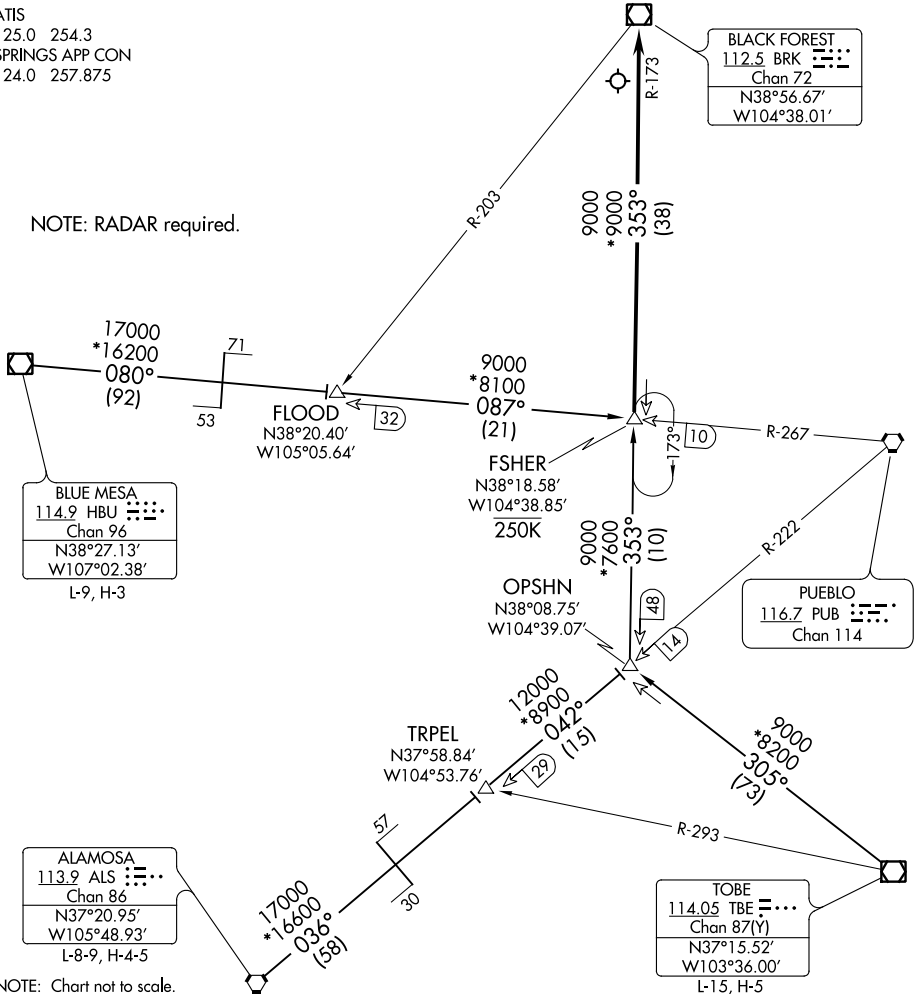
DEBERRY FIVE ARRIVAL

AL-87 (FAA)

CITY OF COLORADO SPRINGS MUNI (COS)
COLORADO SPRINGS, COLORADO

ATIS
125.0 254.3
SPRINGS APP CON
124.0 257.875

NOTE: RADAR required.



SW-1, 07 SEP 2023 to 05 OCT 2023

SW-1, 07 SEP 2023 to 05 OCT 2023

ARRIVAL ROUTE DESCRIPTION

ALAMOSA TRANSITION (ALS.DBRY5): From over ALS VORTAC on ALS R-036 and PUB R-222 to TRPEL, then on PUB R-222 and BRK R-173 to FSHER. Thence. . .

BLUE MESA TRANSITION (HBU.DBRY5): From over HBU VOR/DME on HBU R-080 and PUB R-267 to FLOOD, then on PUB R-267 to FSHER. Thence. . .

TOBE TRANSITION (TBE.DBRY5): From over TBE VOR/DME on TBE R-305 and BRK R-173 to FSHER. Thence. . .

. . . From over FSHER on BRK R-173 to BRK VOR/DME. Expect RADAR vectors to the final approach course at or before BRK VOR/DME.

LOST COMMUNICATIONS: Proceed to BRK VOR/DME.

DEBERRY FIVE ARRIVAL