

LOC I-COS 109.9	APP CRS 352°	Rwy ldg TDZE Apt Elev	11022 6075 6187
---------------------------	------------------------	-----------------------------	--

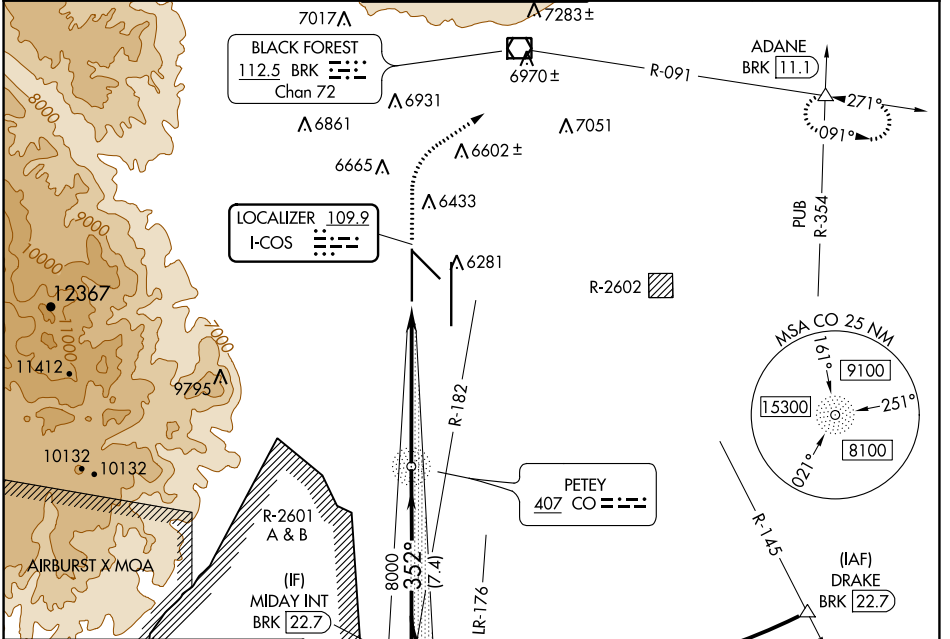
ILS or LOC RWY 35L

CITY OF COLORADO SPRINGS MUNI (COS)

ADF required for LOC only.

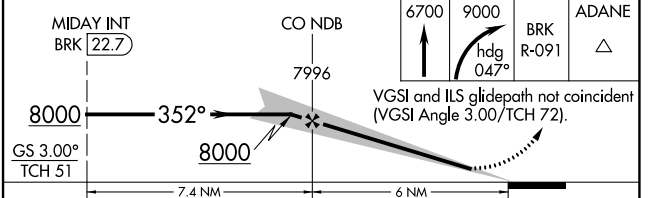
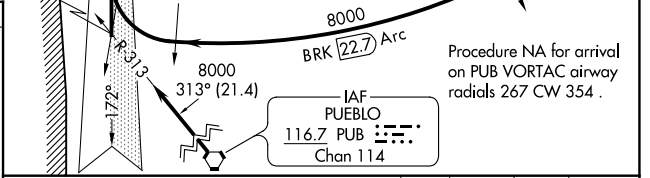
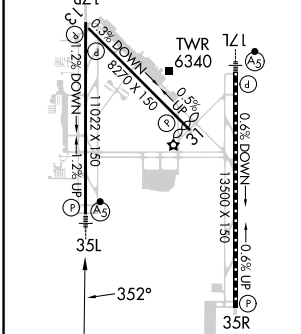
MALSR MISSED APPROACH: Climb to 6700 then climbing right turn to 9000 on heading 047° and BRK VOR/DME R-091 to ADANE INT/BRK 11.1 DME and hold.

ATIS 125.0 254.3	SPRINGS APP CON 124.0 257.875	SPRINGS TOWER 119.9 360.6	GND CON 121.7 348.6	CLNC DEL 134.45 363.125
----------------------------	---	-------------------------------------	-------------------------------	-----------------------------------



ELEV 6187 **D** TDZE 6075

HIRL Rws 17R-35L and 17L-35R
REIL Rws 13, 17R, 31 and 35R
TDZ/CL Rws 17L and 35R
MIRL Rwy 13-31



CATEGORY	A	B	C	D
S-ILS 35L*	6275/24		200 (100-½)	
S-LOC 35L	6340/24		265 (200-½)	
C CIRCLING	6740-1 553 (600-1)	6760-1 573 (600-1)	6980-2¼ 793 (800-2¼)	7240-3 1053 (1100-3)

SW-1, 07 SEP 2023 to 05 OCT 2023

SW-1, 07 SEP 2023 to 05 OCT 2023