

LOC/DME I-AHI 109.1 Chan 28	APP CRS 352°	Rwy Idg 13500 TDZE 6118 Apt Elev 6187
------------------------------------------	------------------------	------------------------------------------------------------------

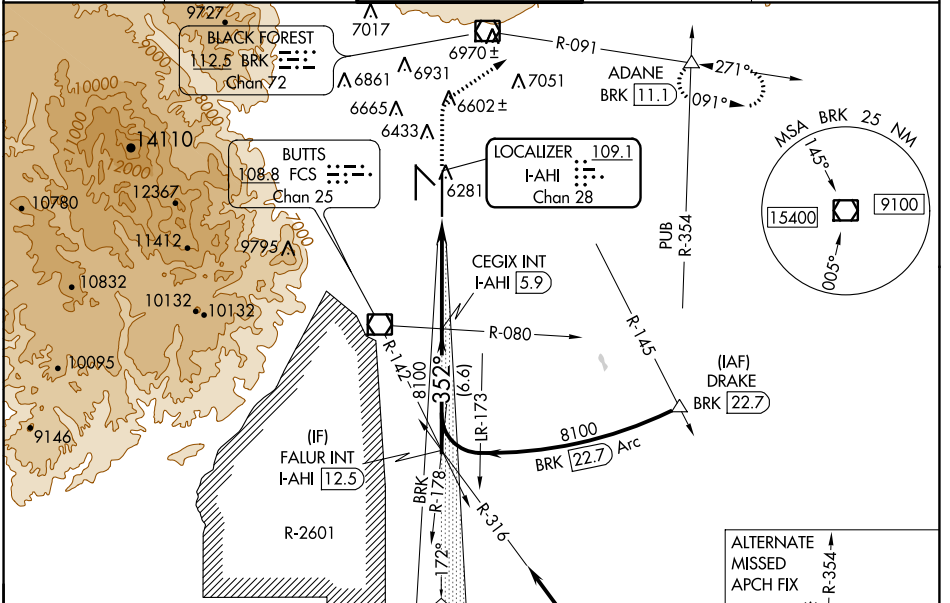
ILS or LOC RWY 35R

CITY OF COLORADO SPRINGS MUNI (COS)

⚠ RADAR required when R-2601 in use.

⚠ MISSED APPROACH: Climb to 6700 then climbing right turn to 9000 on heading 047° and on BRK VOR/DME R-091 to ADANE INT/BRK 11.1 DME and hold.

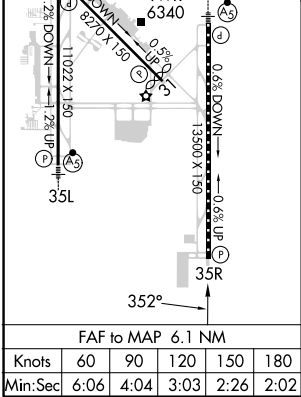
ATIS 125.0 254.3	SPRINGS APP CON 124.0 257.875	SPRINGS TOWER 119.9 360.6	GND CON 121.7 348.6	CLNC DEL 134.45 363.125
----------------------------	-----------------------------------------	-------------------------------------	-------------------------------	-----------------------------------



ELEV 6187	D TDZE 6118
MIRL Rwy 13-31	MIRL Rwy 13-31
HIRL Rws 17R-35L and 17L-35R	
REIL Rws 13, 17R, 31 and 35R	
TDZ/CL Rws 17L and 35R	

Procedure NA for arrival on PUB VORTAC airway radials 267 CW 354.

ALTERNATE MISSED APCH FIX: 112.1 HGO Chan 58, 116.7 PUB Chan 114, 117.4 R-354, 120.4 R-245.



VGSI and ILS glidepath not coincident (VGSI Angle 3.00/TCH 71).	6700	9000	ADANE
FALUR INT I-AHI 12.5	CEGIX INT I-AHI 5.9	BRK R-091	△
GS 3.00° TCH 55	Use I-AHI DME when on the localizer course.	I-AHI DME ANTENNA *LOC only	
CATEGORY	A	B	C
S-ILS 35R	6318/40 200 (200-¾)		
S-LOC 35R	6420/55	302 (300-1)	6420/45 302 (300-¾)
C CIRCLING	6740-1 553 (600-1)	6800-1 613 (700-1)	7040-2½ 853 (900-2½) 7260-3 1073 (1100-3)

COLORADO SPRINGS, COLORADO
Amdt 2A 17AUG17

CITY OF COLORADO SPRINGS MUNI (COS)
38°48'N-104°42'W

ILS or LOC RWY 35R

SW-1, 07 SEP 2023 to 05 OCT 2023

SW-1, 07 SEP 2023 to 05 OCT 2023