


WAAS CH <b>49112</b> <b>W35A</b>	APP CRS <b>352°</b>	Rwy Idg TDZE <b>6075</b> Apt Elev <b>6187</b>	<b>11022</b>
--	------------------------	---	--------------

# RNAV (GPS) Y RWY 35L

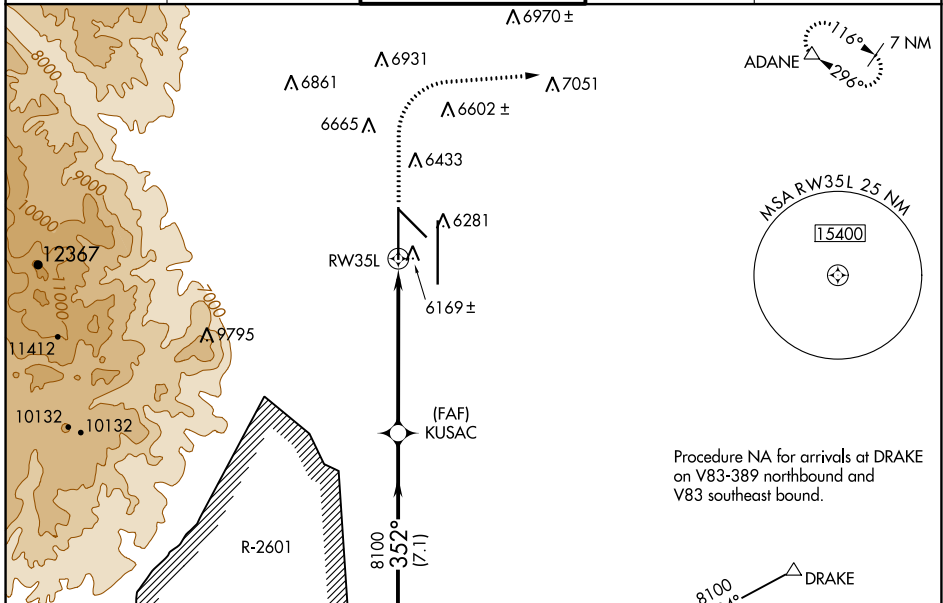
CITY OF COLORADO SPRINGS MUNI (COS)

**⚠** For uncompensated Baro-VNAV systems, LNAV/VNAV NA below -21°C (-5°F) or above 54°C (130°F). DME/DME RNP-0.3 NA. For inop MALSR increase LNAV Cat C and D visibility to RVR 5500. RADAR monitoring required when R-2601 in use. # RVR 1800 authorized with use of FD or AP or HUD to DA.

**MALSR** 

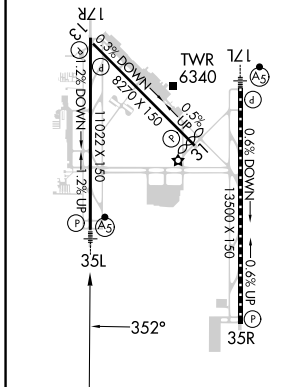
**MISSED APPROACH:** Climb to 6700 then climbing right turn to 9000 direct ADANE and hold.

ATIS <b>125.0 254.3</b>	SPRINGS APP CON <b>124.0 257.875</b>	SPRINGS TOWER <b>119.9 360.6</b>	GND CON <b>121.7 348.6</b>	CLNC DEL <b>134.45 363.125</b>
----------------------------	---	-------------------------------------	-------------------------------	-----------------------------------



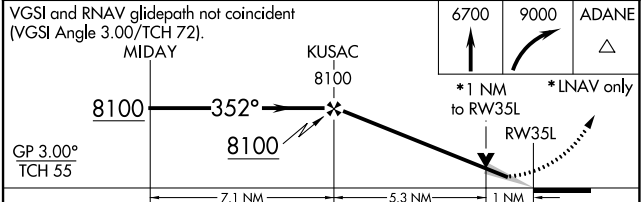
ELEV <b>6187</b>	<b>D</b>	TDZE <b>6075</b>
------------------	----------	------------------

MIRL Rwy 13-31  
HIRL Rwy 17R-35L and 17L-35R  
REIL Rwy 13, 17R, 31 and 35R  
TDZ/CL Rwy 17L and 35R



Procedure NA for arrivals at DRAKE on V83-389 northbound and V83 southeast bound.

Procedure NA for arrivals on PUB VORTAC airway radials 267 CW 354.



CATEGORY	A	B	C	D
LPV DA #		6275/24	200 (100-1/2)	
LNAV/VNAV DA		6380/30	305 (200-5/8)	
LNAV MDA	6440/24	365 (300-1/2)	6440/35	365 (300-5/8)
<b>C</b> CIRCLING	6740-1 553 (600-1)	6800-1 613 (700-1)	7040-2 1/2 853 (900-2 1/2)	7260-3 1073 (1100-3)

SW-1, 07 SEP 2023 to 05 OCT 2023

SW-1, 07 SEP 2023 to 05 OCT 2023