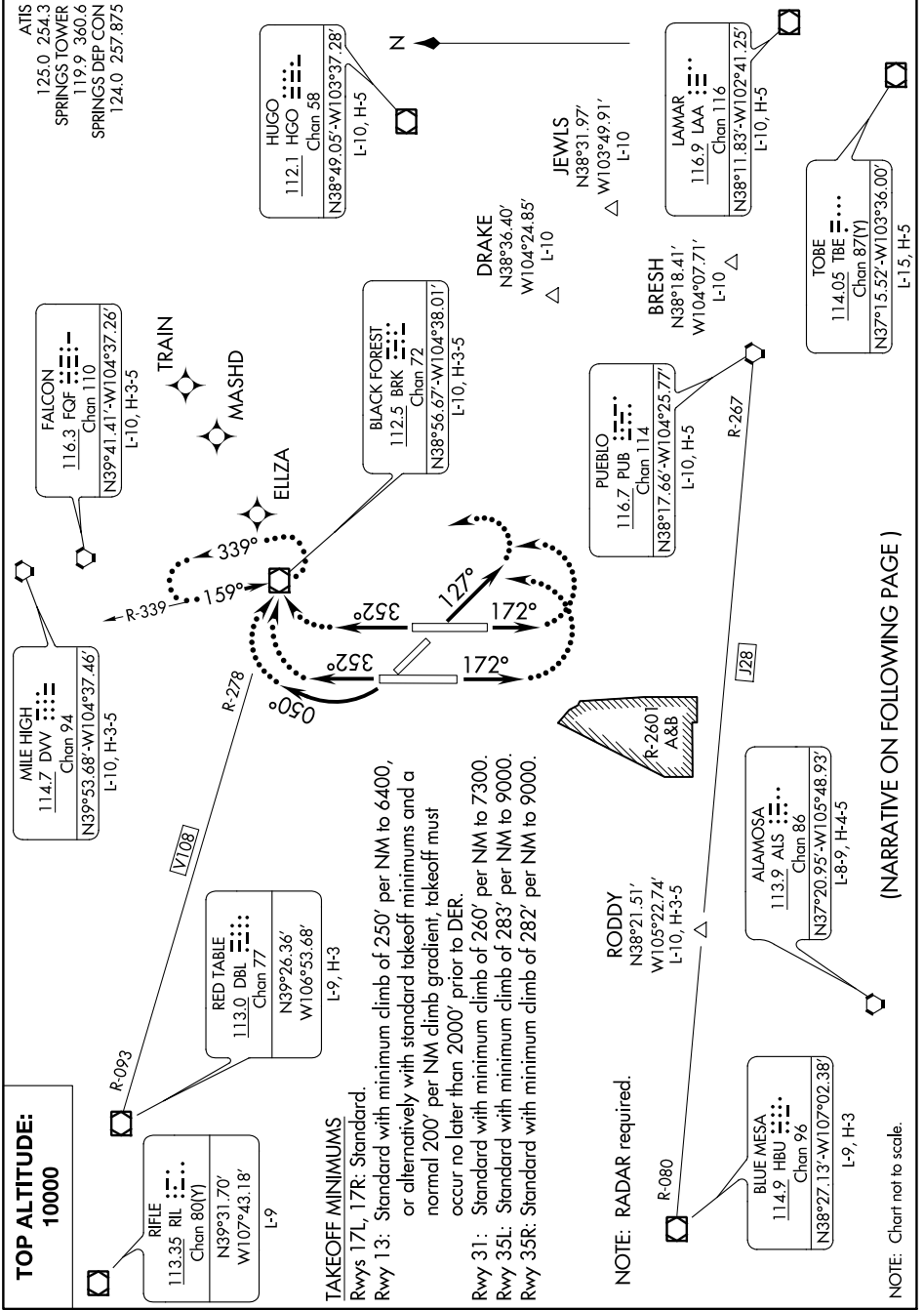


SPRINGS SIX DEPARTURE

AL-87 (FAA)

CITY OF COLORADO SPRINGS MUNI (COS)
COLORADO SPRINGS, COLORADO

SW-1, 07 SEP 2023 to 05 OCT 2023



TOP ALTITUDE:
10000

RIFLE
113.35 RIL
Chan 80(V)
N39°31.70'
W107°43.18'
L-9

RED TABLE
113.0 DBL
Chan 77
N39°26.36'
W106°53.68'
L-9, H-3

MILE HIGH
114.7 DVV
Chan 94
N39°53.68'-W104°37.46'
L-10, H-3-5

FALCON
116.3 FOF
Chan 110
N39°41.41'-W104°37.26'
L-10, H-3-5

HUGO
112.1 HGO
Chan 58
N38°49.05'-W103°37.28'
L-10, H-5

BLACK FOREST
112.5 BRK
Chan 72
N38°56.67'-W104°38.01'
L-10, H-3-5

PUEBLO
116.7 PUB
Chan 114
N38°17.66'-W104°25.77'
L-10, H-5

BRESH
N38°18.41'
W104°07.71'
L-10

DRAKE
N38°36.40'
W104°24.85'
L-10

JEWELS
N38°31.97'
W103°49.91'
L-10

LAMAR
116.9 LAA
Chan 116
N38°11.83'-W102°41.25'
L-10, H-5

TOBE
114.05 TBE
Chan 87(Y)
N37°15.52'-W103°36.00'
L-15, H-5

ALAMOSA
113.9 ALS
Chan 86
N37°20.95'-W105°48.93'
L-8-9, H-4-5

BLUE MESA
114.9 HBU
Chan 96
N38°27.13'-W107°02.38'
L-9, H-3

RODDY
N38°21.51'
W105°22.74'
L-10, H-3-5

NOTE: RADAR required.

TAKEOFF MINIMUMS

Rwys 17L, 17R: Standard.

Rwy 13: Standard with minimum climb of 250' per NM to 6400, or alternatively with standard takeoff minimums and a normal 200' per NM climb gradient, takeoff must occur no later than 2000' prior to DER.

Rwy 31: Standard with minimum climb of 260' per NM to 7300.

Rwy 35L: Standard with minimum climb of 283' per NM to 9000.

Rwy 35R: Standard with minimum climb of 282' per NM to 9000.

NOTE: Chart not to scale.

(NARRATIVE ON FOLLOWING PAGE)

SW-1, 07 SEP 2023 to 05 OCT 2023

SPRINGS SIX DEPARTURE