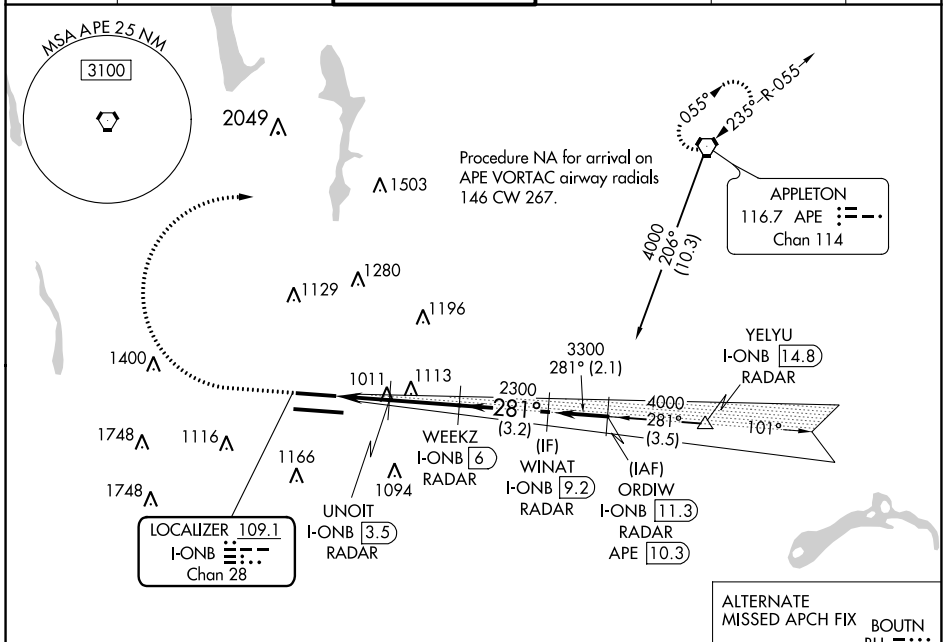


LOC/DME I-ONB <b>109.1</b> Chan 28	APP CRS <b>281°</b>	Rwy ldg <b>8000</b> TDZE <b>813</b> Apt Elev <b>815</b>
--	------------------------	---

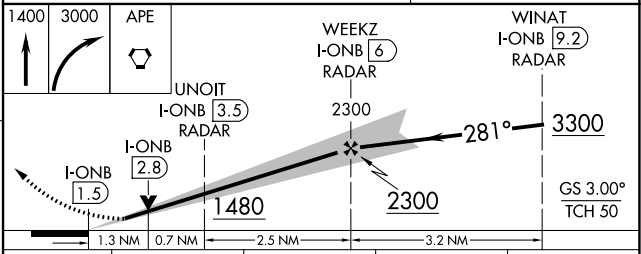
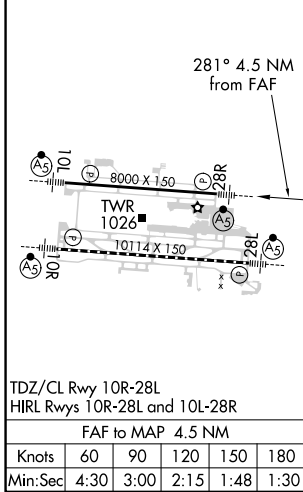
# ILS or LOC RWY 28R

JOHN GLENN COLUMBUS INTL (CMH)

DME or RADAR required.		MALSR	MISSED APPROACH: Climb to 1400 then climbing right turn to 3000 direct APE VORTAC and hold.		
⚠ Simultaneous approach authorized. Autopilot coupled approach NA. ⚠ For inop ALS, increase S-LOC 28R Cat C/D visibility to 1 3/8 SM.		AS			
D-ATIS <b>124.6</b>	COLUMBUS APP CON <b>125.95 371.975</b>	COLUMBUS TOWER <b>132.7 257.8</b>	GND CON <b>121.9 348.6</b>	CLNC DEL <b>126.3</b>	CPDLC



ELEV 815	D	TDZE 813
----------	---	----------



CATEGORY	A	B	C	D
S-ILS 28R	1013/24 200 (200-1/2)			
S-LOC 28R	1280/24	467 (500-1/2)	1280/50	467 (500-1)
CIRCLING	1340-1	525 (600-1)	1520-2 705 (800-2)	1520-2 1/4 705 (800-2 1/4)

EC-2, 07 SEP 2023 to 05 OCT 2023

EC-2, 07 SEP 2023 to 05 OCT 2023