

RNAV (RNP) Z RWY 28L


JOHN GLENN COLUMBUS INTL (CMH)

APP CRS	Rwy Idg	10113
281°	TDZE	815
	Apt Elev	815

RNP AR APCH.

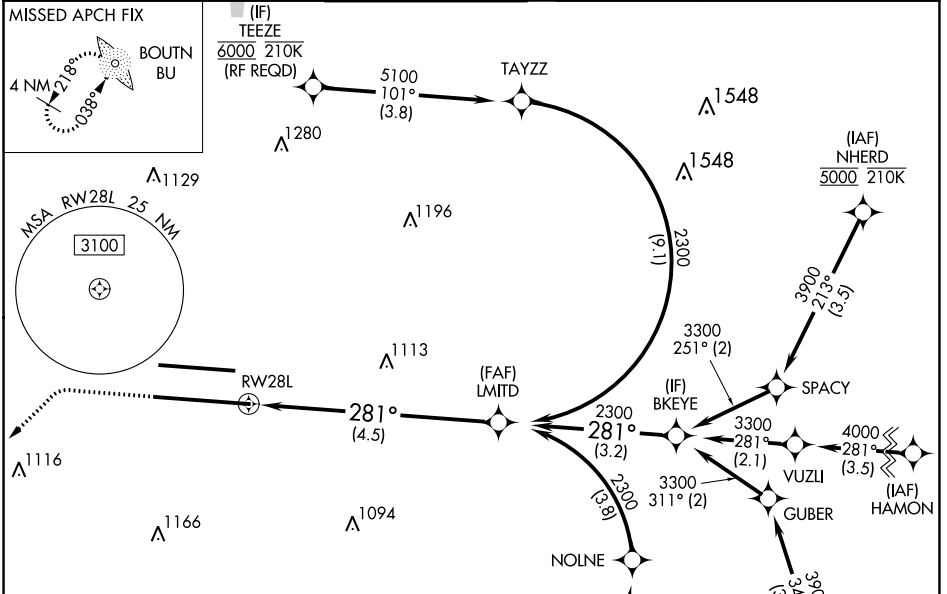
▽ For uncompensated Baro-VNAV systems, procedure NA below -19°C or above 54°C. For inop ALS, increase RNP 0.30 all Cats visibility to 1½ SM. Simultaneous approach authorized.

MALS R

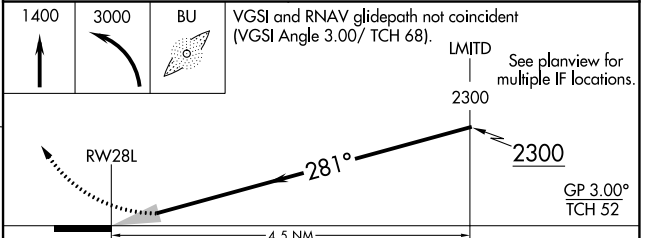
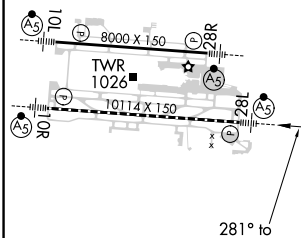


MISSED APPROACH:
Climb to 1400 then climbing left turn to 3000 direct BOUTN LOM and hold.

D-ATIS 124.6	COLUMBUS APP CON 125.95 371.975	COLUMBUS TOWER 132.7 257.8	GND CON 121.9 348.6	CLNC DEL 126.3	CPDLC
------------------------	---	--------------------------------------	-------------------------------	--------------------------	-------



ELEV 815	D	TDZE 815
----------	----------	----------



CATEGORY	A	B	C	D
RNP 0.17 DA		1147/26	332 (400-½)	
RNP 0.30 DA		1314/50	499 (500-1)	

AUTHORIZATION REQUIRED

EC-2, 07 SEP 2023 to 05 OCT 2023

EC-2, 07 SEP 2023 to 05 OCT 2023