

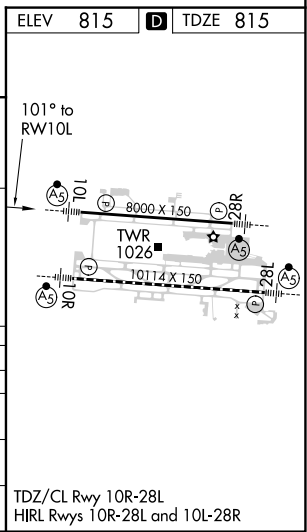
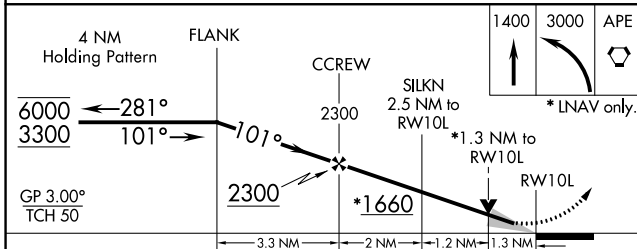
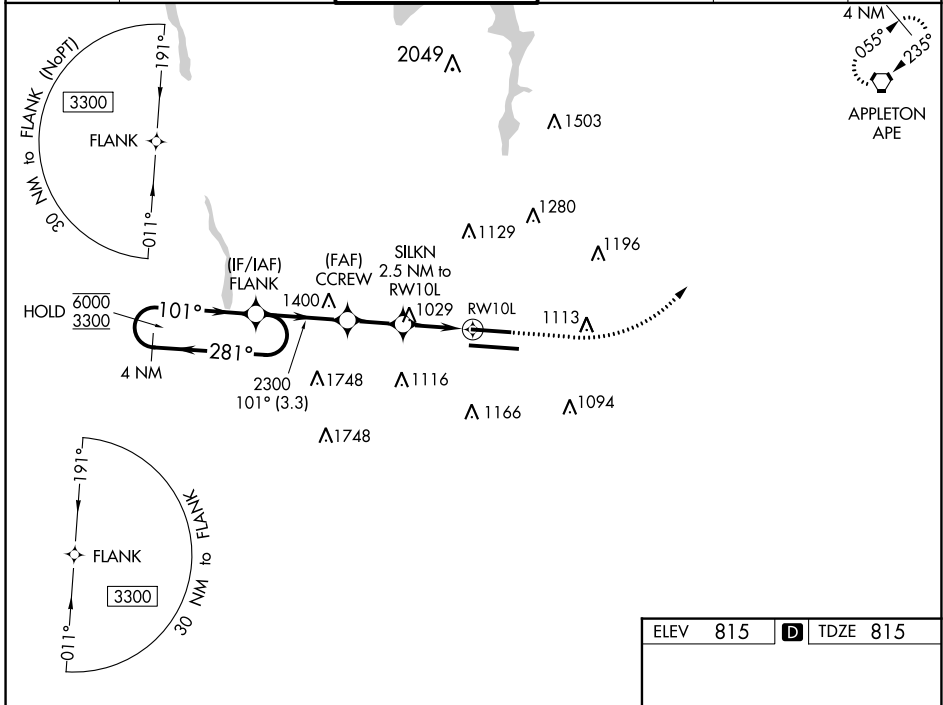
WAAS CH 40299 W10B	APP CRS 101°	Rwy Idg TDZE Apt Elev	8000 815 815
--	------------------------	-----------------------------	---

RNAV (GPS) Y RWY 10L

JOHN GLENN COLUMBUS INTL (CMH)

RNP APCH	<p>▼ For uncompensated Baro-VNAV systems, LNAV/VNAV NA below -19°C or above 54°C.</p> <p>▲ LNAV procedure NA during simultaneous operations. Use of FD or AP providing RNAV track guidance required during simultaneous operations. Simultaneous approach authorized. For inop ALS, increase LNAV Cat C/D visibility to 1½ SM.</p> <p># RVR 1800 authorized with use of FD or AP or HUD to DA.</p>	MALSRL 	MISSED APPROACH: Climb to 1400 then climbing left turn to 3000 direct APE VORTAC and hold.
----------	--	------------	---

D-ATIS 124.6	COLUMBUS APP CON 125.95 371.975	COLUMBUS TOWER 132.7 257.8	GND CON 121.9 348.6	CLNC DEL 126.3	CPDLC
------------------------	---	--------------------------------------	-------------------------------	--------------------------	-------



CATEGORY	A	B	C	D
LPV DA #		1015/24	200 (200-½)	
LNAV/VNAV DA		1197/35	382 (400-⅝)	
LNAV MDA	1280/24	465 (500-½)	1280/50	465 (500-1)
C CIRCLING	1340-1	525 (600-1)	1520-2 705 (800-2)	1520-2¼ 705 (800-2¼)

TDZ/CL Rwy 10R-28L
HIRL Rwy 10R-28L and 10L-28R

EC-2, 07 SEP 2023 to 05 OCT 2023

EC-2, 07 SEP 2023 to 05 OCT 2023