

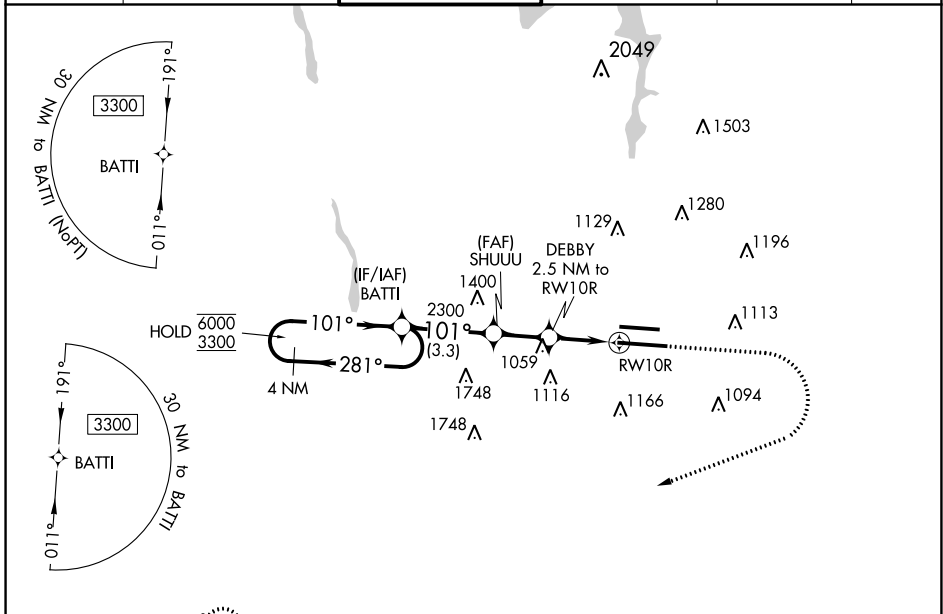
WAAS CH <b>99603</b> <b>W10A</b>	APP CRS <b>101°</b>	Rwy Idg TDZE <b>809</b> Apt Elev <b>815</b>
--	------------------------	---

# RNAV (GPS) Y RWY 10R

JOHN GLENN COLUMBUS INTL (CMH)

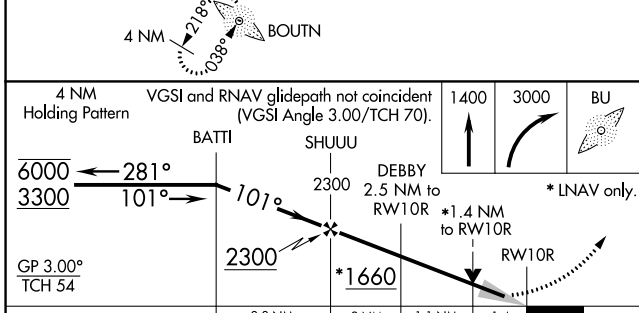
RNP APCH.	MALSR 	MISSED APPROACH: Climb to 1400 then climbing right turn to 3000 direct BU LOM and hold.
<p><b>⚠</b> For uncompensated Baro-VNAV systems, LNAV/VNAV NA below -19°C or above 54°C. LNAV procedure NA during simultaneous operations. Use of FD or AP providing RNAV track guidance required during simultaneous operations. For inop ALS, increase LNAV Cat C/D visibility to 1<math>\frac{1}{2}</math> SM. Simultaneous approach authorized.</p>		

D-ATIS <b>124.6</b>	COLUMBUS APP CON <b>125.95 371.975</b>	COLUMBUS TOWER <b>132.7 257.8</b>	GND CON <b>121.9 348.6</b>	CLNC DEL <b>126.3</b>	CPDLC
------------------------	---	--------------------------------------	-------------------------------	--------------------------	-------



EC-2, 07 SEP 2023 to 05 OCT 2023

EC-2, 07 SEP 2023 to 05 OCT 2023



ELEV 815	<b>D</b> TDZE 809
----------	-------------------

CATEGORY	A	B	C	D
LPV DA	1009/18 200 (200- $\frac{1}{2}$ )			
LNAV/VNAV DA	1194/35 385 (400- $\frac{5}{8}$ )			
LNAV MDA	1320/24	511 (600- $\frac{1}{2}$ )	1320/55	511 (600-1)
<b>C</b> CIRCLING	1340-1	525 (600-1)	1520-2 705 (800-2)	1520-2 $\frac{1}{4}$ 705 (800-2 $\frac{1}{4}$ )

