

WAAS CH 82030 W03B	APP CRS 041°	Rwy ldg TDZE 1503 Apt Elev 1503
--	------------------------	---

RNAV (GPS) Y RWY 3

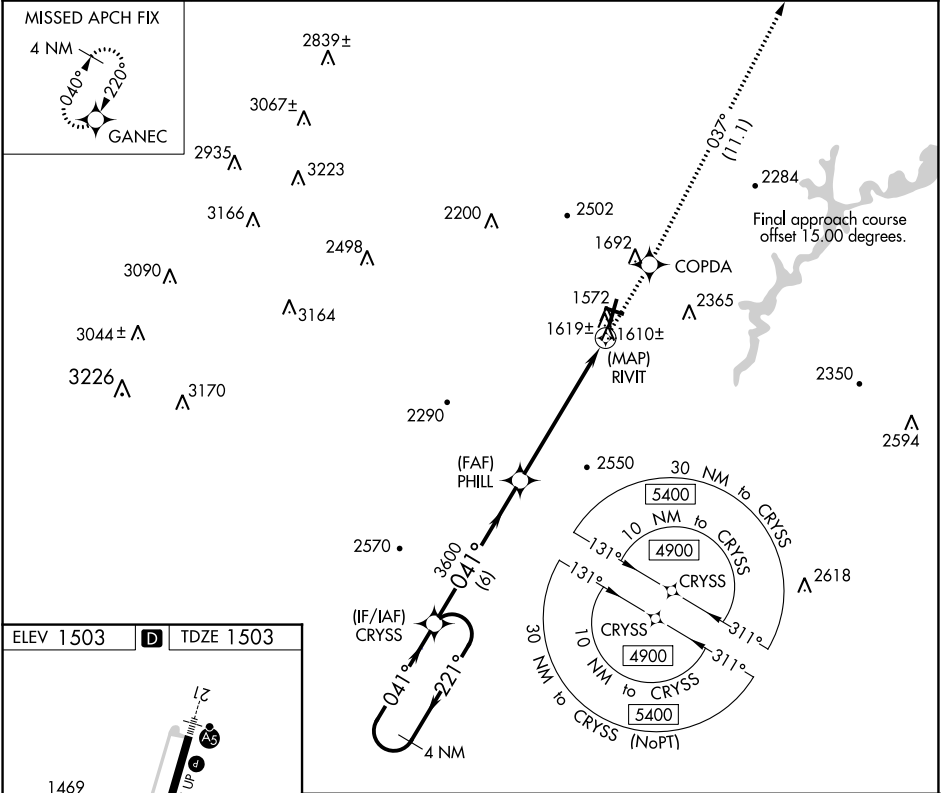
ALTOONA/BLAIR COUNTY (A00)

RNP APCH - GPS.

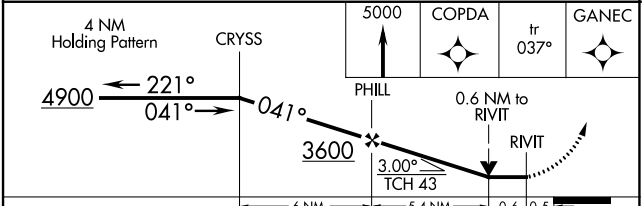
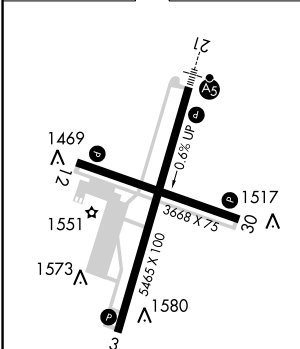
- ▼ When local altimeter setting not received, use Bedford County altimeter setting, increase all MDA 100 feet. Increase LNAV and LP Cat C/D visibilities 3/8 SM and Circling Cat A 1/4 SM.
- ▲ Rwy 3, helicopter visibility reduction below 3/8 SM NA. Circling NA to Rwys 12 and 30. VDP NA when using Bedford County altimeter setting.

MISSED APPROACH: Climb to 5000 direct COPDA on track 037° to GANEC and hold, continue climb-in-hold to 5000.

ASOS 127.125	JOHNSTOWN APP CON * 121.2 299.2	CTAF 123.60	UNICOM 123.0
------------------------	---	-----------------------	------------------------



ELEV 1503	D	TDZE 1503
-----------	----------	-----------



CATEGORY	A	B	C	D
LP MDA	1860-1 357 (400-1)			
LNAV MDA	1880-1 377 (400-1)			
C CIRCLING	2240-1 737 (800-1)	2240-1 1/4 737 (800-1 1/4)	2800-3 1297 (1300-3)	2840-3 1337 (1400-3)

HIRL Rwy 3-21 **0**
MIRL Rwy 12-30 **0**
REIL Rwys 3, 12, and 30 **0**

NE-4, 07 SEP 2023 to 05 OCT 2023

NE-4, 07 SEP 2023 to 05 OCT 2023