

LOC/DME I-ODA 110.75 Chan 44 (Y)	APP CRS 138°	Rwy Idg TDZE Apt Elev 8496 401 401
---	------------------------	--

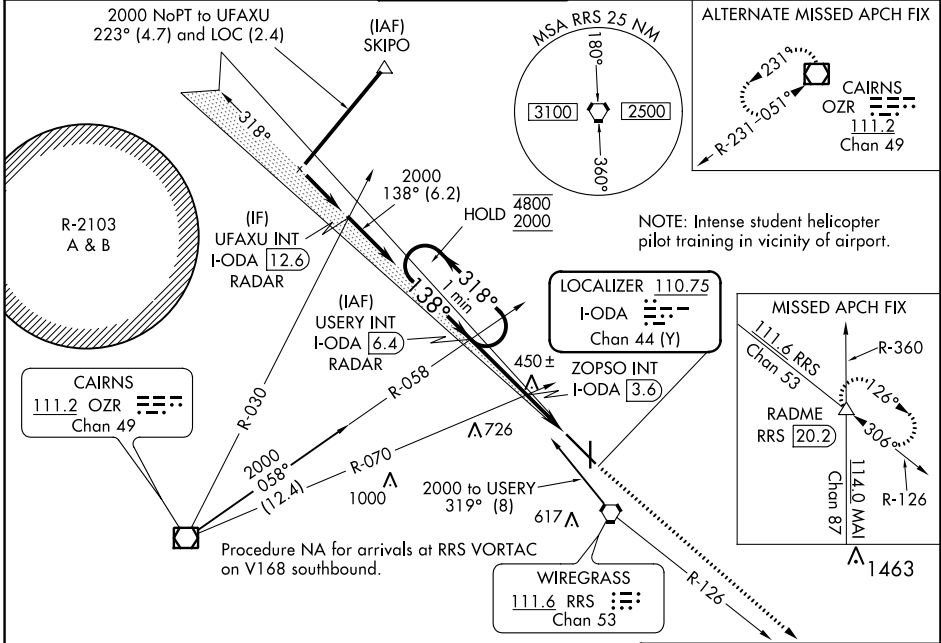
ILS or LOC RWY 14

DOTHAN RGNL (DHN)

Autopilot coupled approach NA below 590.

MISSED APPROACH: Climb to 3000 on heading 138° and on RRS VORTAC R-126 to RADME INT/RRS 20.2 DME and hold.

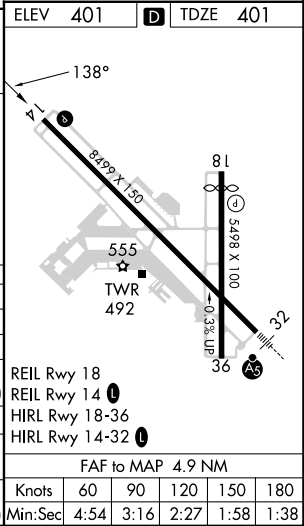
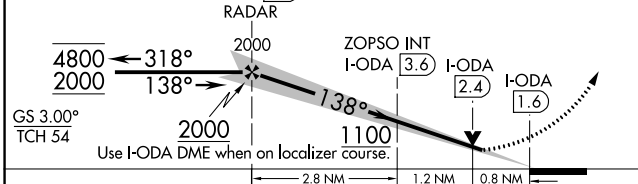
ATIS 135.725	CAIRNS APP CON ★ 125.4 327.125	DOTHAN TOWER ★ 118.4 (CTAF) 0 257.6	GND CON 121.7 348.6	UNICOM 122.95
------------------------	--	---	-------------------------------	-------------------------



SE-4, 07 SEP 2023 to 05 OCT 2023

SE-4, 07 SEP 2023 to 05 OCT 2023

One Minute Holding Pattern	VGSI and ILS glidepath not coincident (VGSI Angle 3.00/TCH 40).	3000 ↑ hdg 138°	RRS R-126	RADME ELEV 401 TDZE 401
----------------------------	---	-----------------------	-----------	-------------------------



CATEGORY	A	B	C	D	E
S-ILS 14	601-¾		200 (200-¾)		
S-LOC 14	1100-1	699 (700-1)		1100-2 699 (700-2)	
CIRCLING	1100-1	699 (700-1)	1100-2 699 (700-2)	1100-2½ 699 (700-2½)	1100-2½ 699 (700-2½)
ZOPSO FIX MINIMUMS (DUAL VOR RECEIVERS, DME, OR RADAR REQUIRED)					
S-LOC 14	700-1		299 (300-1)		
CIRCLING	860-1	459 (500-1)	920-1½ 519 (600-1½)	1040-2 639 (700-2)	1040-2½ 639 (700-2½)