

APP CRS	Rwy Idg	N/A
117°	TDZE	N/A
	Apt Elev	1763

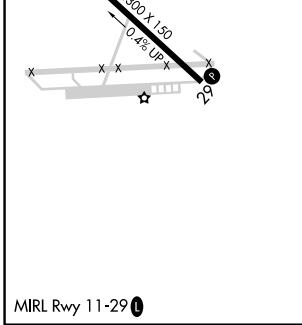
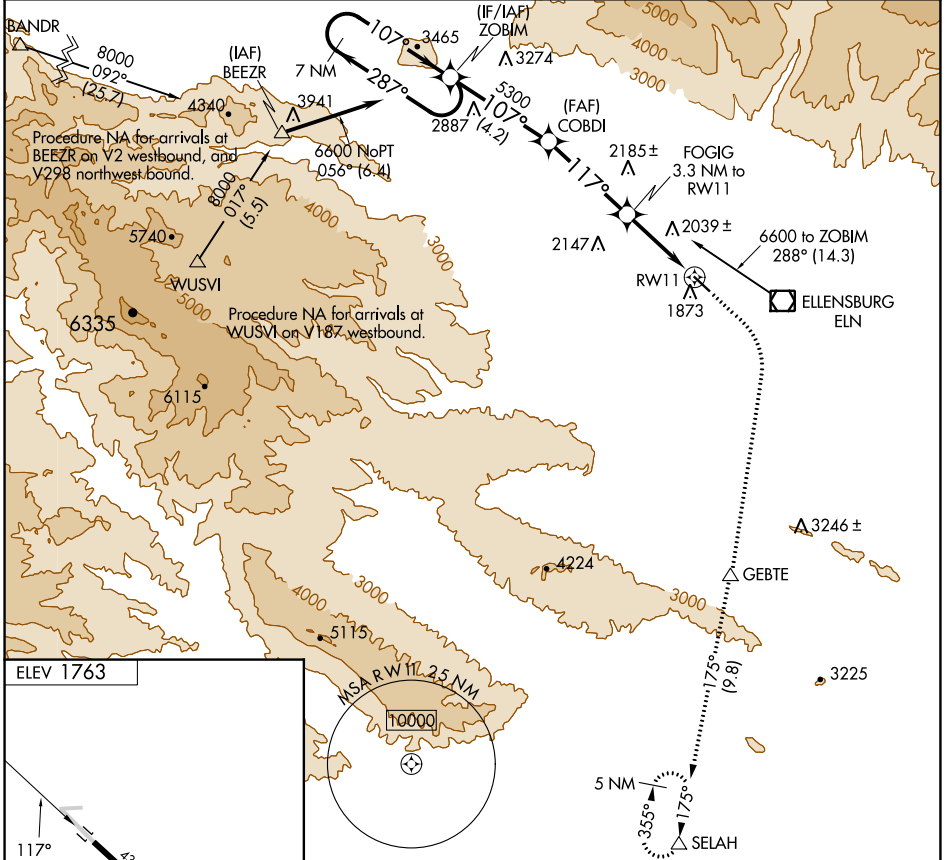
RNAV (GPS)-C

BOWERS FLD (ELN)

⚠ DME/DME RNP-0.3 NA. When local altimeter setting not received, use Pangborn Memorial altimeter setting: Increase all MDA 140 feet; increase Cats B/C visibility ¼ SM.

⚠ MISSED APPROACH: Climb to 2700 then climbing right turn to 5500 direct GEBTE and on track 175° to SELAH and hold.

ASOS 118.375	SEATTLE CENTER 132.6 269.35	UNICOM 123.0 (CTAF) 0
------------------------	---------------------------------------	---------------------------------



	7 NM Holding Pattern	ZOBIM	COBDI	FOGIG 3.3 NM to RW11	SELAH
	6600	287°	107°	5300	117°
				3880	5.91° TCH 40
					2700
					5500
					GEBTE
					tr 175°
					SELAH
CATEGORY	A	B	C	D	
CIRCLING	2660-1¼	897 (900-1¼)	2660-2¾ 897 (900-2¾)	2760-3 997 (1000-3)	

NW-1, 07 SEP 2023 to 05 OCT 2023

NW-1, 07 SEP 2023 to 05 OCT 2023