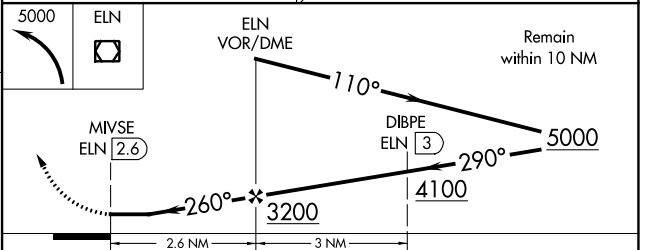
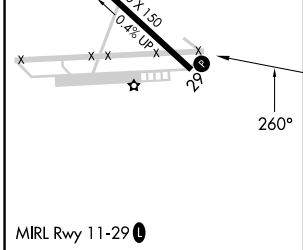
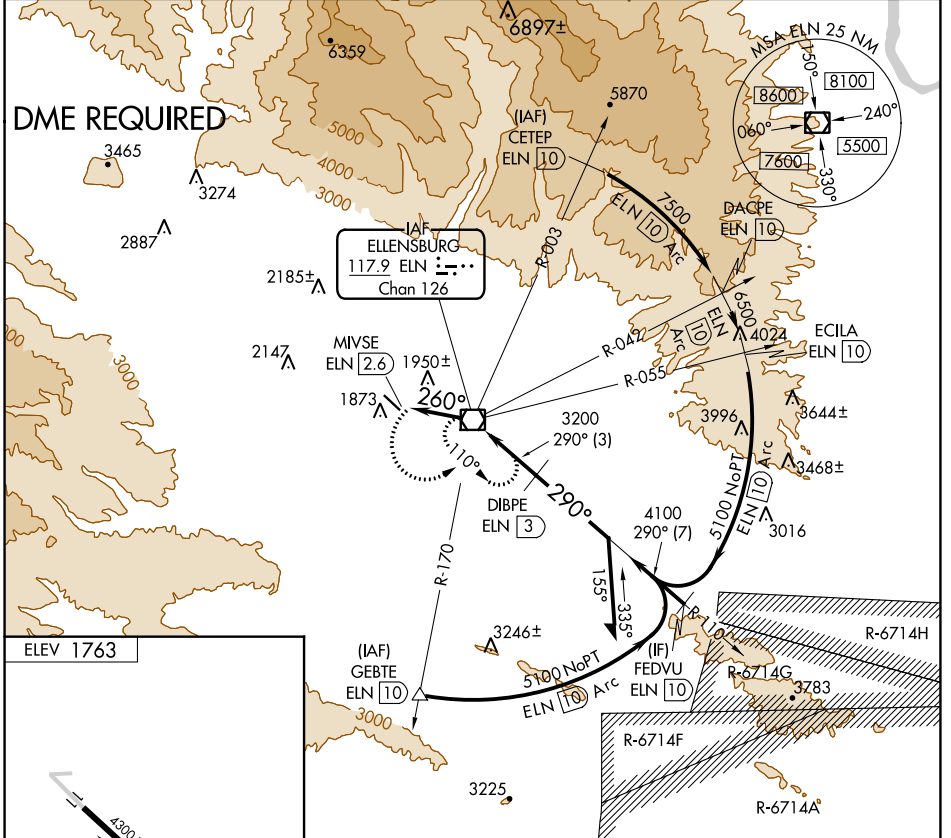


VOR/DME ELN 117.9 Chan 126	APP CRS 260°	Rwy Idg TDZE Apt Elev 1763	N/A N/A 1763
--	------------------------	--	--------------------

VOR-A
BOWERS FLD (ELN)

NA Procedure NA when R-6714A, F, G, H are in operation. MISSED APPROACH: Climbing left turn to 5000 direct ELN VOR/DME and hold.

ASOS 118.375	SEATTLE CENTER 132.6 269.35	UNICOM 123.0 (CTAF) 1
------------------------	---------------------------------------	---------------------------------



FAF to MAP 2.6 NM					
Knots	60	90	120	150	180
Min:Sec	2:36	1:44	1:18	1:02	0:52
CATEGORY	A	B	C	D	
CIRCLING	2280-1 517 (600-1)	2420-1 657 (700-1)	NA		

NW-1, 07 SEP 2023 to 05 OCT 2023

NW-1, 07 SEP 2023 to 05 OCT 2023