

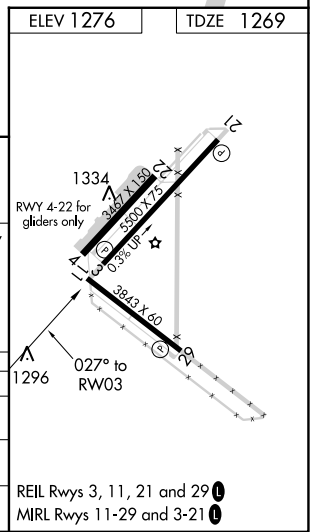
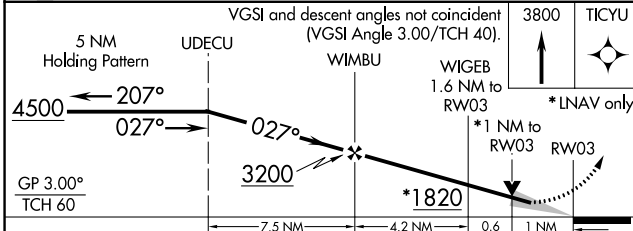
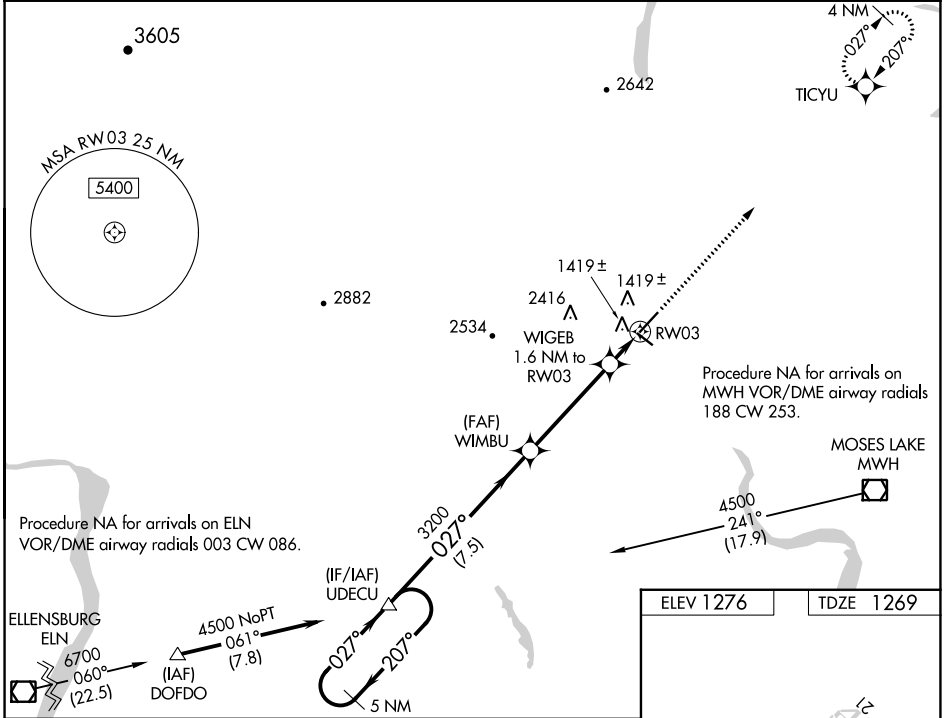
WAAS CH 50208 W03A	APP CRS 027°	Rwy ldg 5500 TDZE 1269 Apt Elev 1276
--	------------------------	---

RNAV (GPS) RWY 3

EPHRATA MUNI (EPH)

RNP APCH.	<p>⚠ For uncompensated Baro-VNAV systems, LNAV/VNAV NA below -17°C or above 46°C. VDP and Baro-VNAV NA when using Moses Lake/Grant County Intl altimeter setting. When local altimeter setting not received, use Moses Lake/Grant County Intl altimeter setting and increase all DA/MDA 40 feet and LNAV Cat C and D visibility 1/4 SM.</p>	<p>MISSED APPROACH: Climb to 3800 direct TICYU and hold.</p>

ASOS 135.775	GRANT COUNTY APP CON * 126.4 379.95	UNICOM 122.8 (CTAF) 0
------------------------	---	---------------------------------



CATEGORY	A	B	C	D
LPV DA		1519-1	250 (300-1)	
LNAV/VNAV DA		1689-1½	420 (500-1½)	
LNAV MDA	1680-1	411 (500-1)	1680-1¼	411 (500-1¼)

NW-1, 07 SEP 2023 to 05 OCT 2023

NW-1, 07 SEP 2023 to 05 OCT 2023