

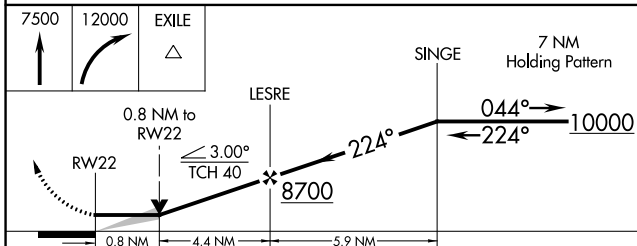
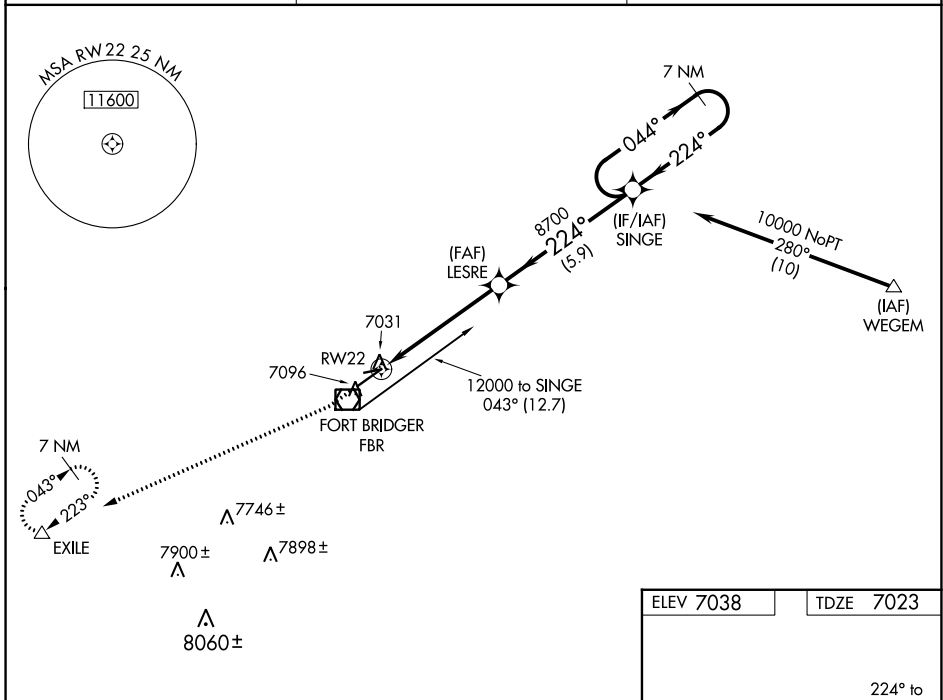
WAAS CH 78234 W22A	APP CRS 224°	Rwy Idg TDZE Apt Elev	6404 7023 7038
--	------------------------	-----------------------------	---

RNAV (GPS) RWY 22

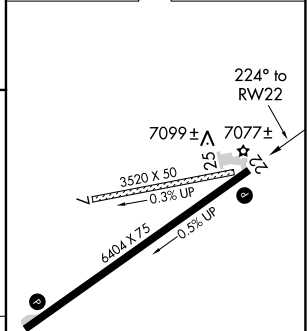
FORT BRIDGER (FBR)

RNP APCH.	<p>⚠ Circling NA to Rwy 7 and 25. When local altimeter setting not received, use Evanston altimeter setting and increase all MDAs 100 feet, increase LNAV Cats C and D visibility $\frac{1}{8}$ SM, Circling Cat C visibility $\frac{1}{4}$ SM and Cat D visibility $\frac{1}{2}$ SM.</p>	<p>MISSED APPROACH: Climb to 7500, then climbing right turn to 12000 direct EXILE and hold, continue climb-in-hold to 12000.</p>
-----------	---	--

AWOS-3PT 118.8	SALT LAKE CENTER 124.35 353.5	UNICOM 122.8 (CTAF) 0
--------------------------	---	---------------------------------



ELEV 7038	TDZE 7023
-----------	-----------



CATEGORY	A	B	C	D
LP MDA	7300-1	277 (300-1)		
LNAV MDA	7340-1	317 (400-1)		
C CIRCLING	7400-1 362 (400-1)	7500-1 462 (500-1)	7660-1 $\frac{3}{4}$ 622 (700-1 $\frac{3}{4}$)	7680-2 642 (700-2)

REIL Rwy 4 and 22 0
MRL Rwy 4-22 0

NW-1, 07 SEP 2023 to 05 OCT 2023

NW-1, 07 SEP 2023 to 05 OCT 2023